



**LA County's Trash TMDL:
Eliminating Trash From The County's Waterways**

Kara Plourde

County of Los Angeles Public Works

Background – Trash TMDL

- Storm events flush the watershed, conveying significant amounts of trash through flood control channels and into the ocean
- TMDL Objectives:
 - Waste Load Allocations for all point and nonpoint sources of trash is ZERO (bigger than 0.5 mm)
 - Responsible Agencies
 - Cities, County, CalTrans, National Forest Service
 - Must control trash from within their jurisdiction

Compliance Options

Generally 2 compliance options:

1. Install full-capture systems throughout jurisdictional areas
 - Targeting first the high trash generating areas, followed by the medium and low trash generating areas.

Full Capture Device Connector Pipe Screen



Compliance Options

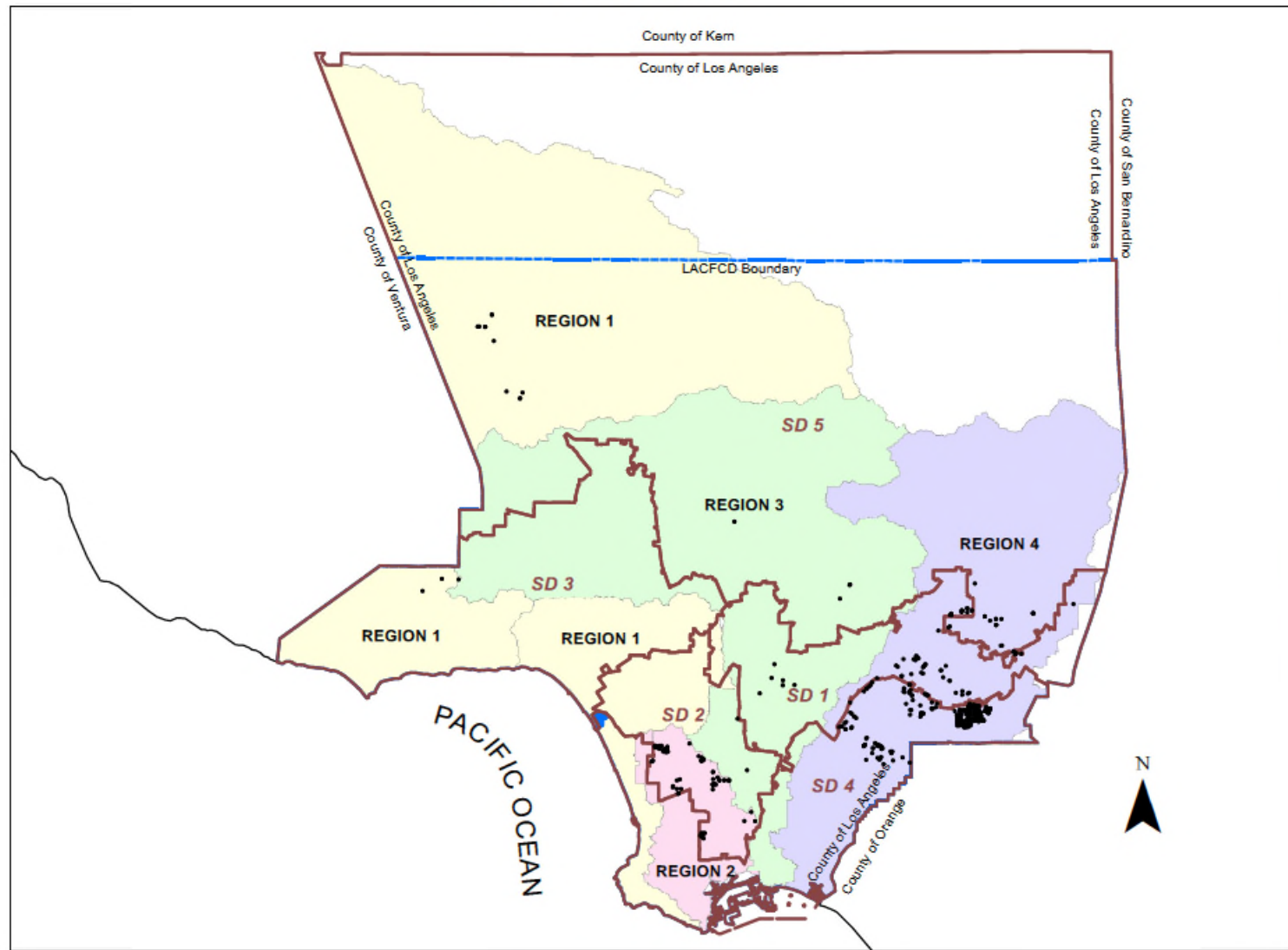
Option 2:

- Install partial-capture devices and apply institutional controls
 - Determine storm year trash discharge by calculating daily generation rate (DGR) for a representative area.

Partial Capture Device Automatic Retractable Screen



SAN GABRIEL RIVER CATCH BASIN RETROFIT - PHASE 11, ET AL PROJECT OVERVIEW



Legend

- Supervisorial District (SD)
- LACFCD Boundary
- Catch Basins

Regions

- Santa Monica Bay & Santa Clara River Watershed
- Dominguez Channel Watershed
- Los Angeles River Watershed
- San Gabriel River Watershed

Comprehensive Strategy

- Institutional Controls

- Street sweeping
- Franchise trash collection program
- Styrofoam food containers restriction
- Single-use plastic bag ban
- Beach and Marina trash removal daily



- Structural Controls

- Full-capture systems
- Partial-capture systems
- Trash booms

Multi-Year, Multi-Agency Plan

- Continue to retrofit catch basins with partial and/or full capture devices
- LACFCD's Trash Reduction Outreach Program is in effect in billboards, signs, and brochures. Sharing material with cities to utilize for public outreach efforts



Short-Term Solutions

- Increased frequency of trash collection along banks of the Ballona Creek Channel
- Enhancing existing trash net in Ballona Creek at Lincoln Blvd
- Installing two additional trash nets upstream of the existing net



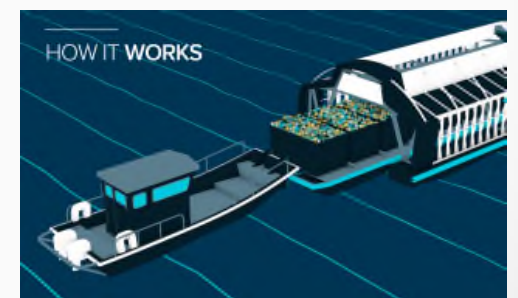
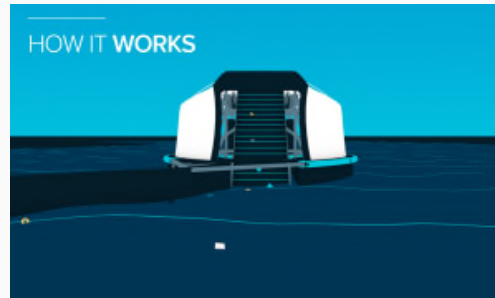
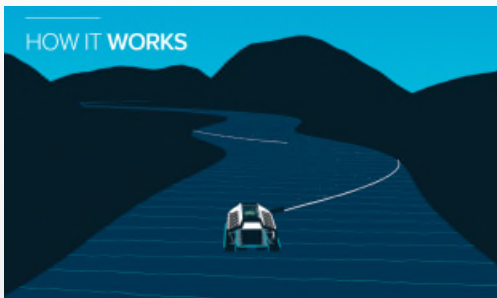
The Ocean Cleanup Pilot Project

THE OCEAN CLEANUP™
INTERCEPTOR™



The Ocean Cleanup Pilot Project

- Private-Public Partnership
- Will reduce floating plastics and other trash in Ballona Creek flowing from Ballona Creek into the ocean
- Goal is to launch the Interceptor in advance of the 2020-2021 Storm Season



The Ocean Cleanup Pilot Project

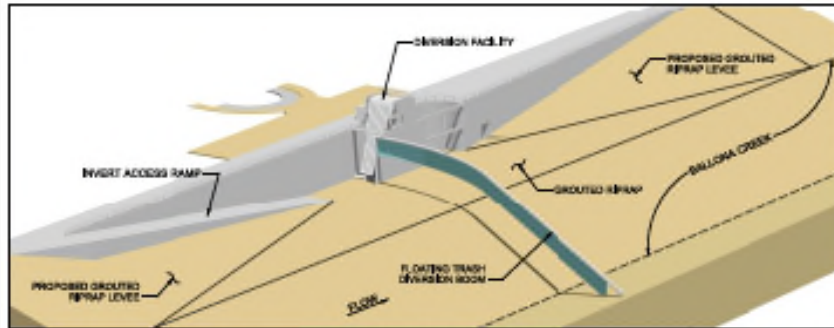




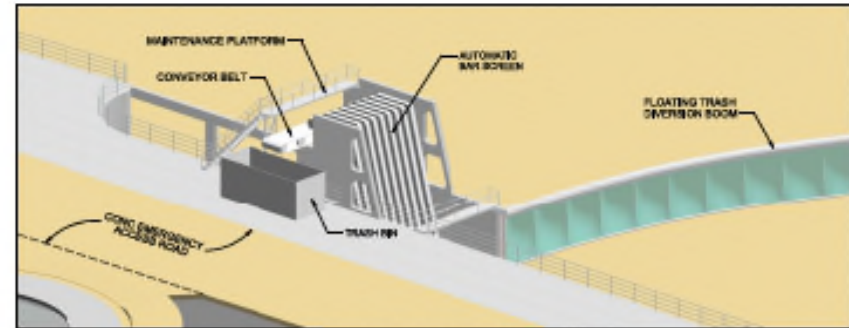
Backup Slides

Long-Term Strategy

- Continue LACFCD's Trash Reduction Outreach
- Implement Side-Channel Diversion with Automatic Trash Removal System – currently in CEQA and Planning Phase



TRASH DIVERSION FACILITY
NO SCALE



TRASH DIVERSION FACILITY
NO SCALE

Background – Trash TMDL

• Compliance Schedule

Watershed	Effective (Adopted) Date	Final Compliance Date (0%)
Ballona Creek ²	8/11/2005	9/30/2015
Los Angeles River ^{2,3}	9/23/2008	9/30/2016
Malibu Creek	7/7/2009	7/7/2017
San Gabriel River East Fork	4/17/2001	4/1/2003
Lake Elizabeth, Et Al	3/6/2008	3/6/2016
Legg Lake	3/6/2008	3/6/2016
Machado Lake	3/6/2008	3/6/2016
Santa Monica Bay	3/20/2012	3/20/2020

1. Initial Compliance Date allows time for Responsible Jurisdictions to implement plan. Compliance based on percentage of baseline trash load.
2. Legal challenges delayed certain Effective Dates.
3. Compliance is determined by the Regional Board NPDES Permit executive order.