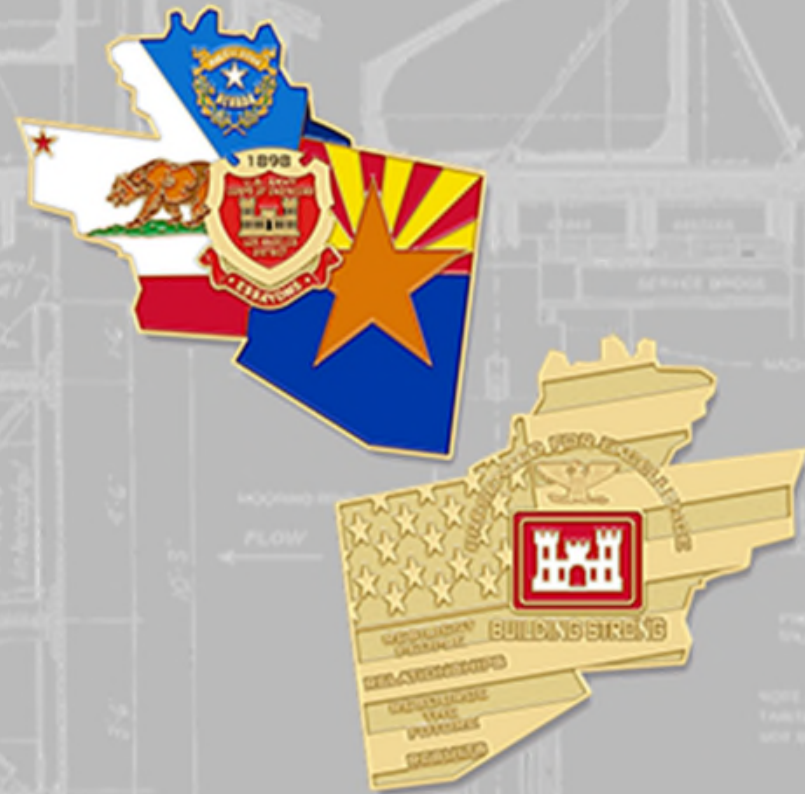


US Army Corps of Engineers Los Angeles District Overview

COL Aaron Barta
Commander
Los Angeles District

Mr David Van Dorpe
Deputy District Engineer for
Programs and Project Management



US Army Corps
of Engineers®



USACE MISSION AREAS



Military Programs

- Military Construction
- COCOM Support ,Overseas Contingency Opns (OCO)
- Installation, Environmental, Energy and Sustainability



Civil Works

- Navigation, Hydropower
- Flood Control, Coast Protect
- Water Supply, Regulatory
- Recreation, Disaster Response
- Environmental Restoration



Homeland Security

- Critical Infrastructure
- Anti-terrorism Plans
- Intelligence
- Facility Security Partnerships
- Emergency Operations



International & Interagency Support

- Federal
- State
- Local
- International
- Foreign Military Sales



USACE Has a Globally Diverse Mission Set Driven by Diverse Customers in Support of the DoD and the Nation

Research & Development

- Warfighter
- Installations & Energy
- Environment ,Water Resources



Real Estate

- Acquire, Manage and Dispose
- DoD Recruiting Facilities
- Contingency Operations



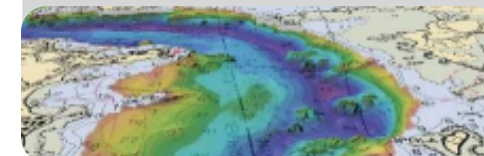
Regulatory

- Regulate Waters of the U.S.
- Section 404 & 10 Programs
- Nationwide Permits



Geospatial Support

- Common Operating Picture
- Support to Civil Works/Military
- Support to Emergency Ops





SOUTH PACIFIC DIVISION





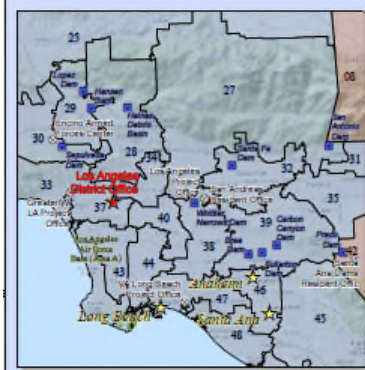
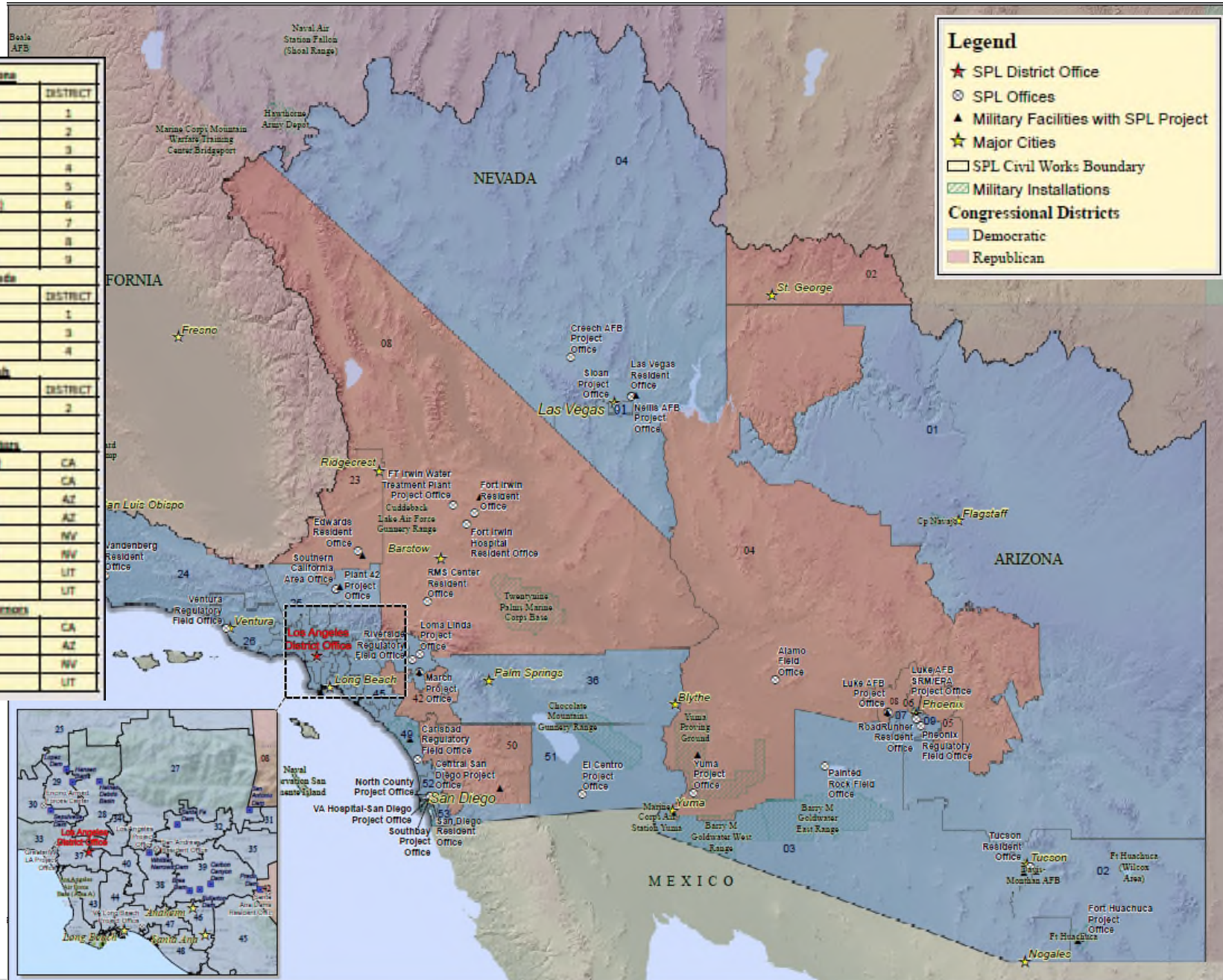
U.S. ARMY

CONGRESSIONAL DELEGATION



116TH CONGRESSIONAL DELEGATION

California		Arizona	
REPRESENTATIVE	DISTRICT	REPRESENTATIVE	DISTRICT
Paul Cook (R)	8	Tom O'Halleran (D)	1
Kevin McCarthy (R)	23	Martha McSally (R)	2
Salud Carbajal (D)	24	Paul Gohmert (R)	3
Katie Hill (D)	25	Paul Gosar (R)	4
Julia Brownley (D)	26	Andy Biggs (R)	5
Judy Chu (D)	27	David Schweikert (R)	6
Adam Schiff (D)	28	Ruben Gallego (D)	7
Tony Cardenas (D)	29	Debbie Lasko (R)	8
Brad Sherman (D)	30	Kyrsten Sinema (D)	9
Pete Aguilar (D)	31	Nevada	
Grace Napolitano (D)	32	REPRESENTATIVE	DISTRICT
Ted Lieu (D)	33	Dira Titus (D)	1
Jimmy Gomez (D)	34	Jacky Rosen (D)	3
Norma Torres (D)	35	Ruben KHuan (D)	4
Raul Ruiz (D)	36	Utah	
Karen Bass (D)	37	REPRESENTATIVE	DISTRICT
Inda Sanchez (D)	38	Chris Stewart (R)	2
Gil Cisneros (D)	39	Senators	
Judith Roybal-Allard (D)	40		
Mark Takano (D)	41	Dianne Feinstein (D)	CA
Ken Calvert (R)	42	Kamala Harris (D)	CA
Maxine Waters (D)	43	Martha McSally (R)	AZ
Nanette Buraglin (D)	44	Kyrsten Sinema (D)	AZ
Katie Porter (D)	45	Jacky Rosen (R)	NV
Lou Correa (D)	46	C. Cortez Masto (D)	NV
Alan Lowenthal (D)	47	Mike Lee (R)	UT
Harley Roady (D)	48	Mitt Romney (R)	UT
Mike Levin (D)	49	4 Governors	
Duncan D. Hunter (R)	50	Gavin Newsom (D)	CA
Juan Vargas (D)	51	Doug Duzey (R)	AZ
Scott Peters (D)	52	Steve Suzuki (D)	NV
Susan Davis (D)	53	Gary Herbert (R)	UT

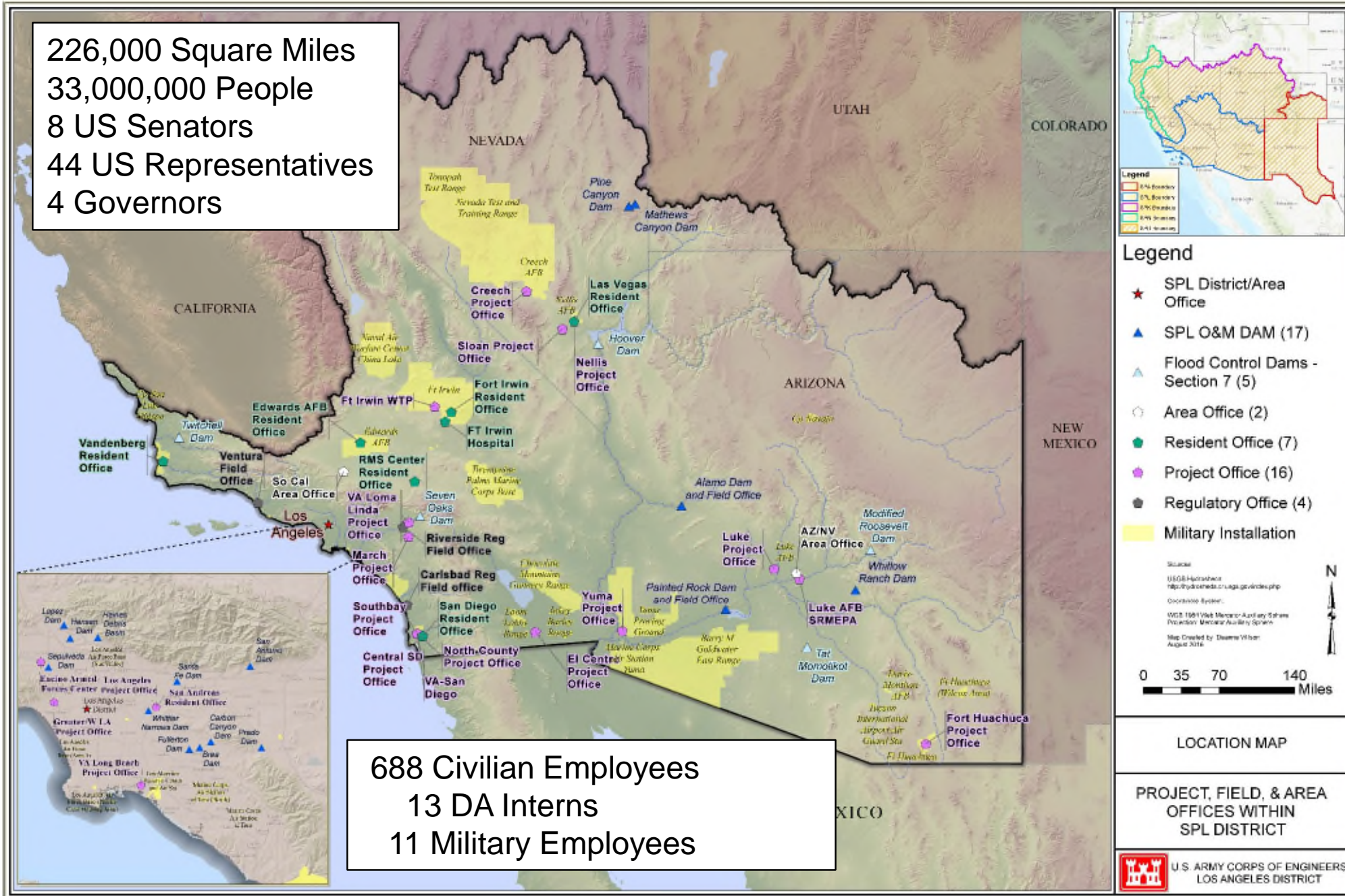




LOS ANGELES DISTRICT



226,000 Square Miles
 33,000,000 People
 8 US Senators
 44 US Representatives
 4 Governors



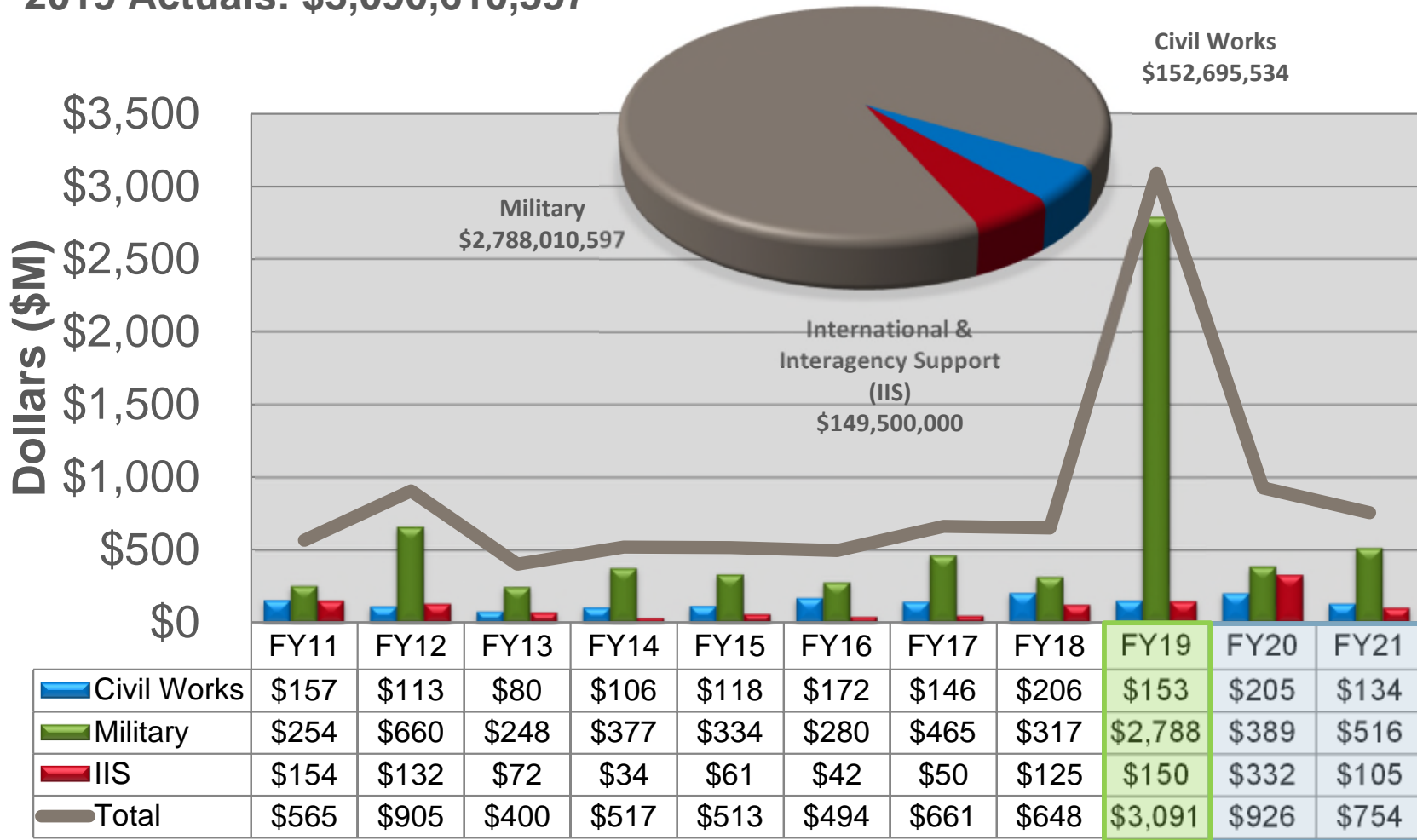
688 Civilian Employees
 13 DA Interns
 11 Military Employees



LOS ANGELES DISTRICT PROGRAM

Current Year

2019 Actuals: \$3,090,610,597

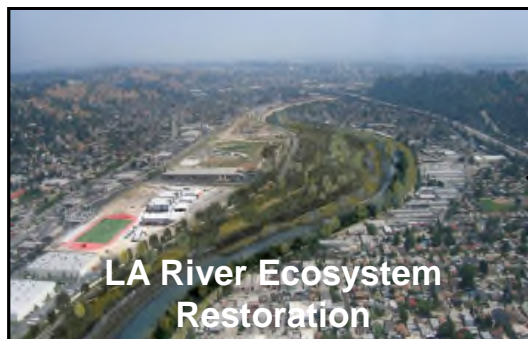


■ FY19 Current Year Execution
■ FY20 and FY21 Forecasted Workload
■ FY11-FY18 Actual Workload Execution

*2019 Federal Emergency Declaration Barrier, Task Force Set up at SPL, Military Execution numbers include the Task Force funds obligations



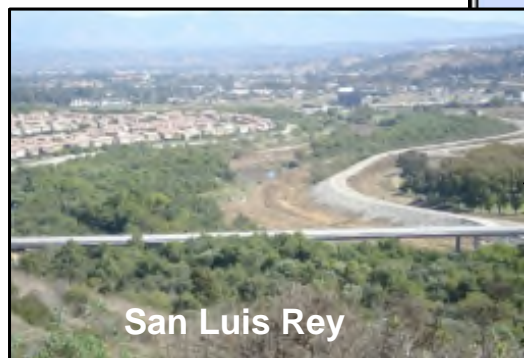
CIVIL WORKS CONSTRUCTION PROGRAM



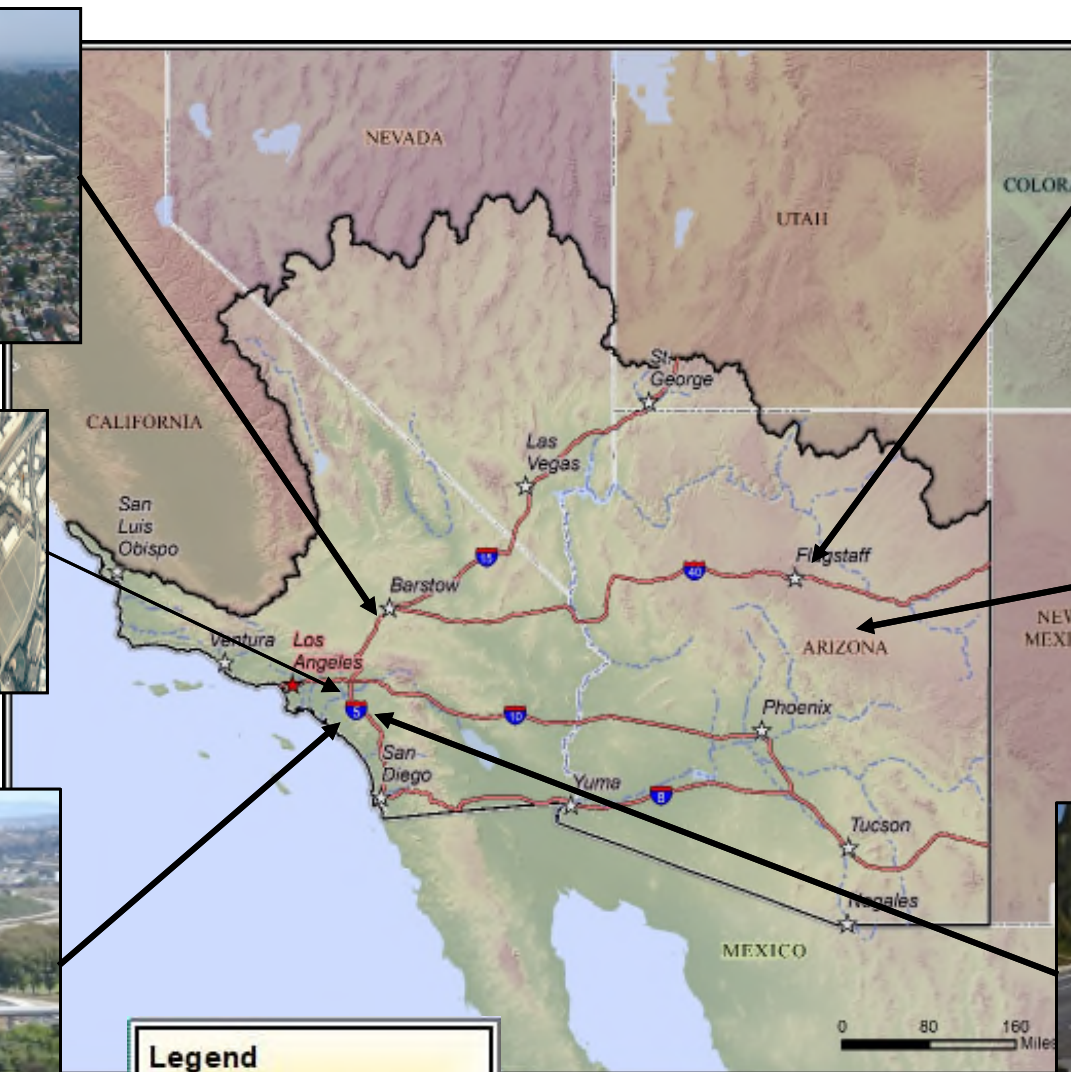
LA River Ecosystem Restoration



Whittier Narrows Dam

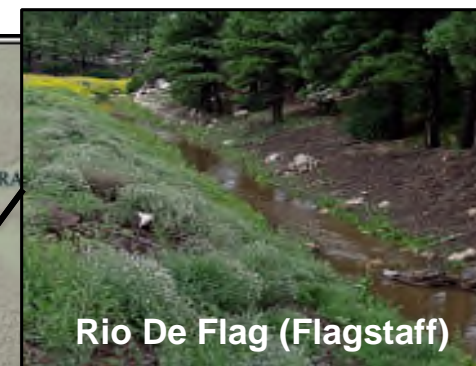


San Luis Rey



Legend

- ★ SPL District Office
- ☆ Major City
- - - US Drainage Systems
- Major Highway
- SPL Civil Works Boundary



Rio De Flag (Flagstaff)



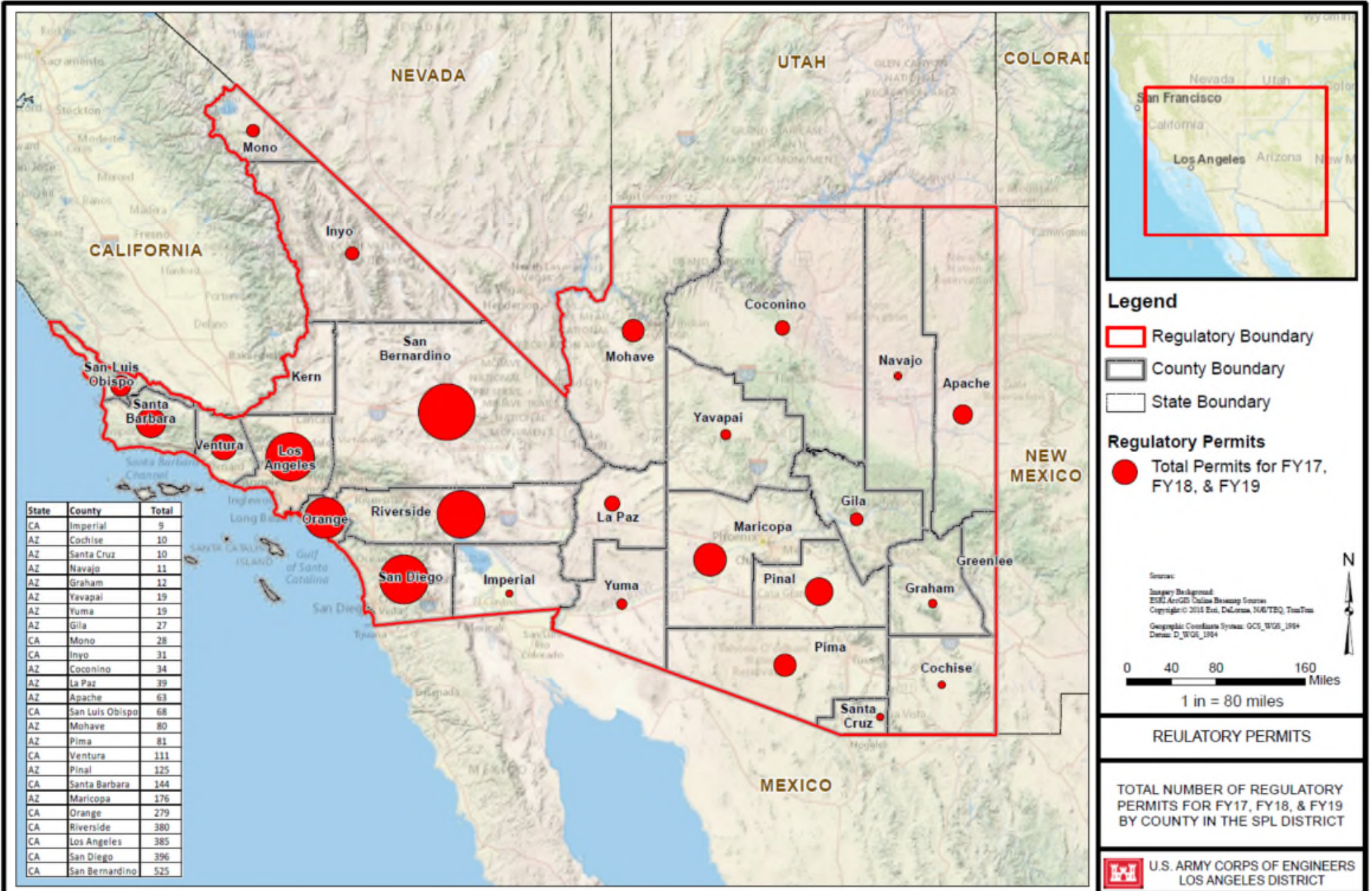
Little Colorado Winslow



Santa Ana River Mainstem

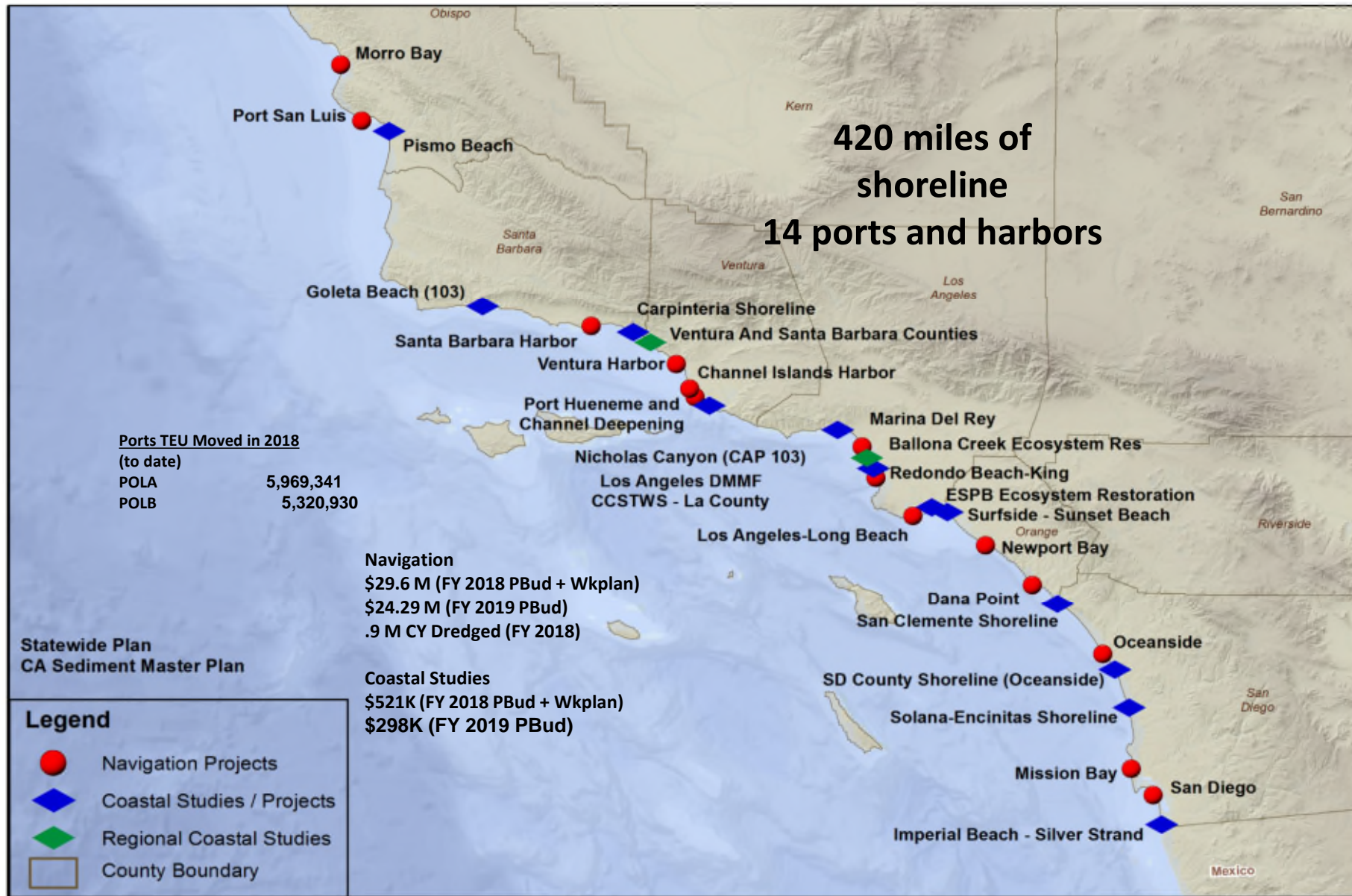


REGULATORY PERMITS FY17-FY19





NAVIGATION & COASTAL PROGRAM





PORT OF LONG BEACH NAVIGATION STUDY



- ✓ Estimated first cost \$151M
- ✓ Avg Net Annual Benefits \$18M
- ✓ 7.4 MCY material dredged
- ✓ **BCR of 3.8** at FY19 discount rate
- ✓ BCR of 2.0 at 7%

Dredge Location	Dredge Depth (ft MLLW)	Dredge Quantity (CY)
Approach Channel	-80	2,600,000
Main Channel Widening	-76	1,065,000
West Basin	-55	717,000
Pier J Approach	-55	2,673,000
Pier J Basin (Port Responsibility)	-55	304,000
Total Dredge Volume:		7,359,000

West Basin (C)

Main Channel (LB)

Pier J (Port)

Pier J Approach and Turning Basin (C)

Approach Channel (LB)

Container Vessels (Depths from -53' to 57' MLLW)

- Pier J approach channel and new turning basin
- West Basin/Pier T

Liquid Bulk Vessels

- Approach Channel (Depths from -78' to 83' MLLW)
- Main Channel (deepening and widening)
- Standby/Waiting area (Depths from -67' to 73' MLLW)



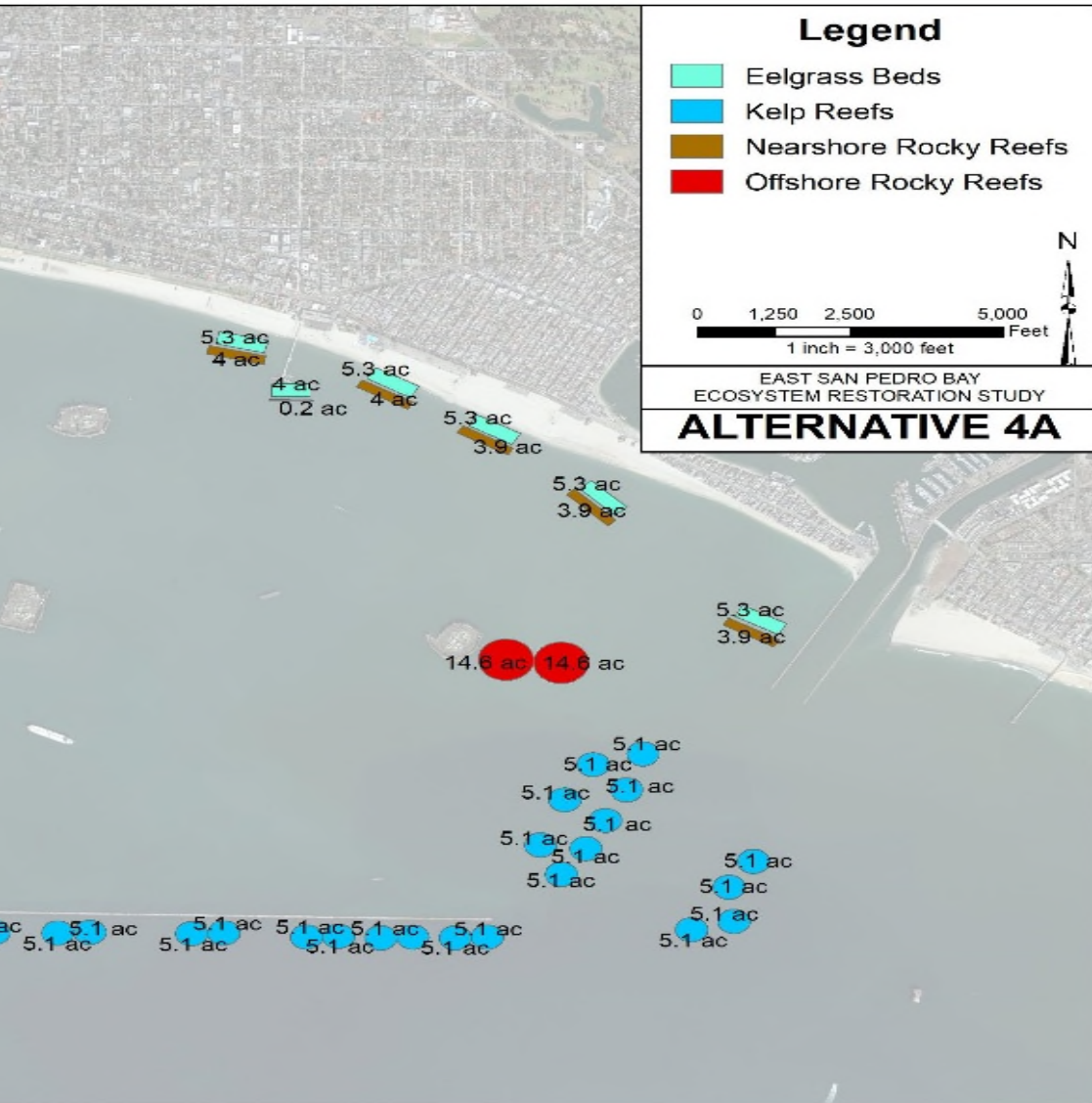
EAST SAN PEDRO BAY RESTORATION STUDY



Total Area Restored=200.7 Acres	
Eelgrass Beds	30.3
Kelp Beds	121.4
Nearshore Rocky Reef	19.9
Open Water Rocky Reef	29.2

Item	Costs
First Cost* (Construction)	\$140,908,000
OMRR&R	\$251,000
Average Annual Cost	\$5,689,000
AAHUs	160.9
AAC/AAHU	\$35,400
First Cost/ Restored Acre	\$702,100

*SPLIT: 65% Fed / 35% Sponsor
(\$91.6 M / \$49.3 M)



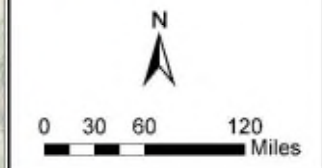


WATERSHED BOUNDARIES

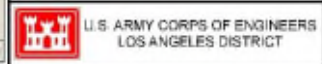


- Legend**
- SPL Dam
 - Channel
 - HUC 6 Watersheds
 - SPL Civil Works Boundary
 - State Boundary

WSD Source:
 Coordinates used between the United States Department of Agriculture National Resources Conservation Service (USDA-NRCS), the United States Geological Survey (USGS), and the Environmental Protection Agency (EPA). The delineated Boundary Dataset (BND) was created from a variety of sources from each state and aggregated into a standard national layer for use in strategic planning and not more suitable. Database Boundary Dataset for Lower 48, state, or (AL20), State 20 (see WWW.ArcInfo.com) "http://catalog.mesa.com/arcinfo.gov"



- WATERSHED BOUNDARIES
- WATERSHED BOUNDARIES WITHIN THE SPL CIVIL WORKS BOUNDARY



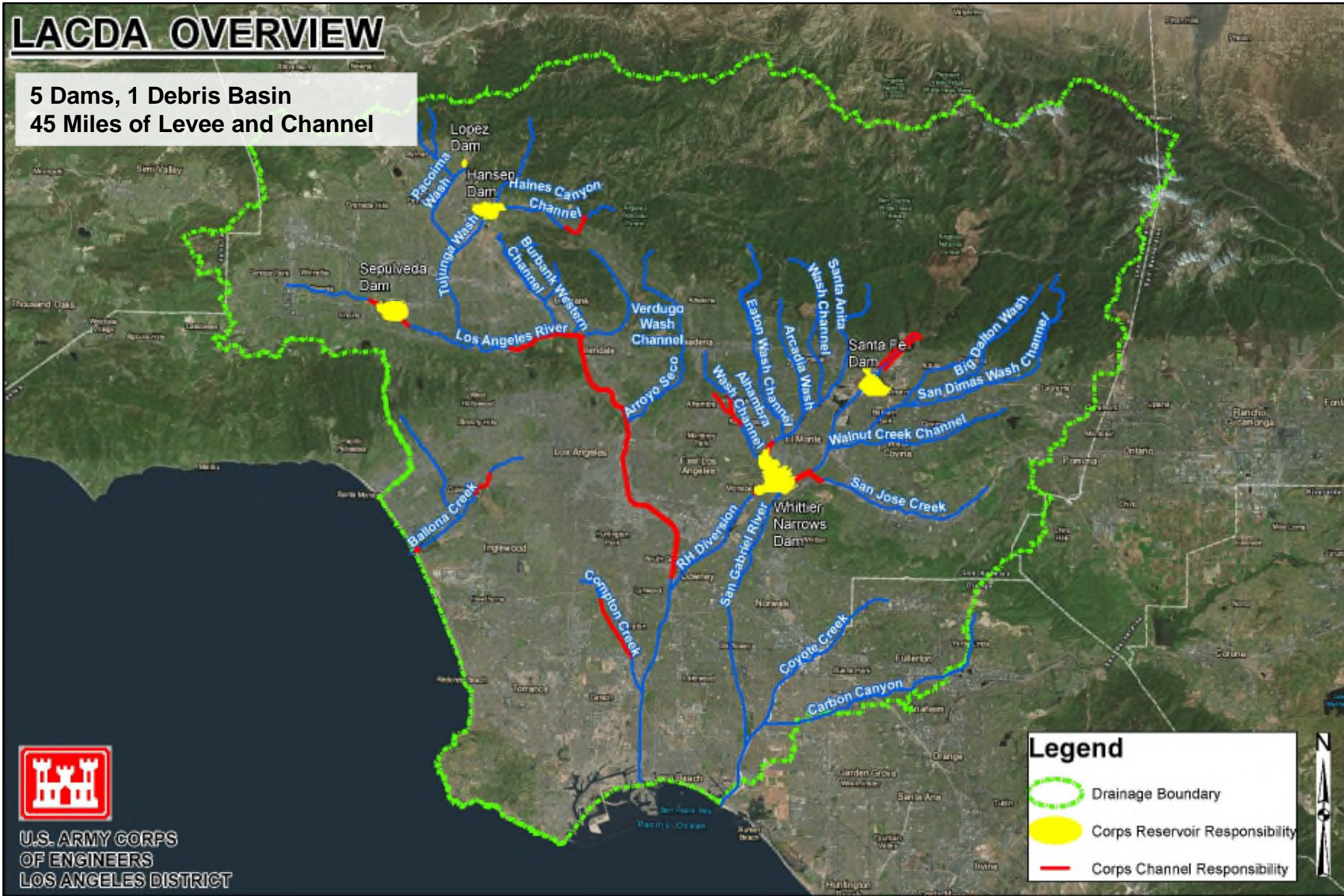


LOS ANGELES COUNTY DRAINAGE AREA (O&M)



LACDA OVERVIEW

5 Dams, 1 Debris Basin
45 Miles of Levee and Channel



U.S. ARMY CORPS OF ENGINEERS
LOS ANGELES DISTRICT

Legend

- Drainage Boundary
- Corps Reservoir Responsibility
- Corps Channel Responsibility

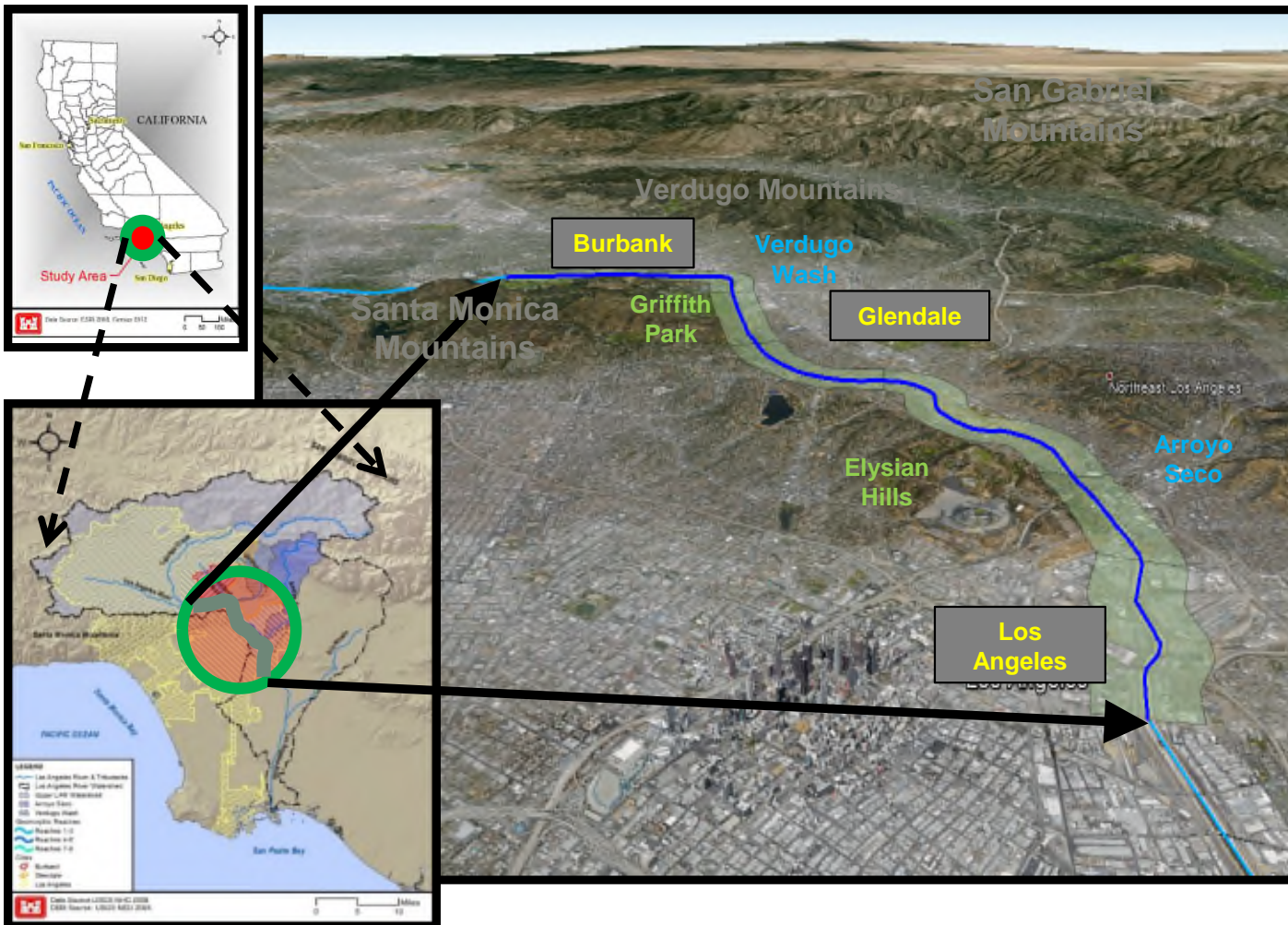




LA RIVER ECOSYSTEM RESTORATION STUDY



Project Location



❖ Project Area

- It includes an approximate 11 mile stretch from the Griffith Park area to First Street. The larger project areas within this section are Verdugo Wash confluence, Taylor Yard, Arroyo Seco confluence and the LATC.

❖ Scope of Project

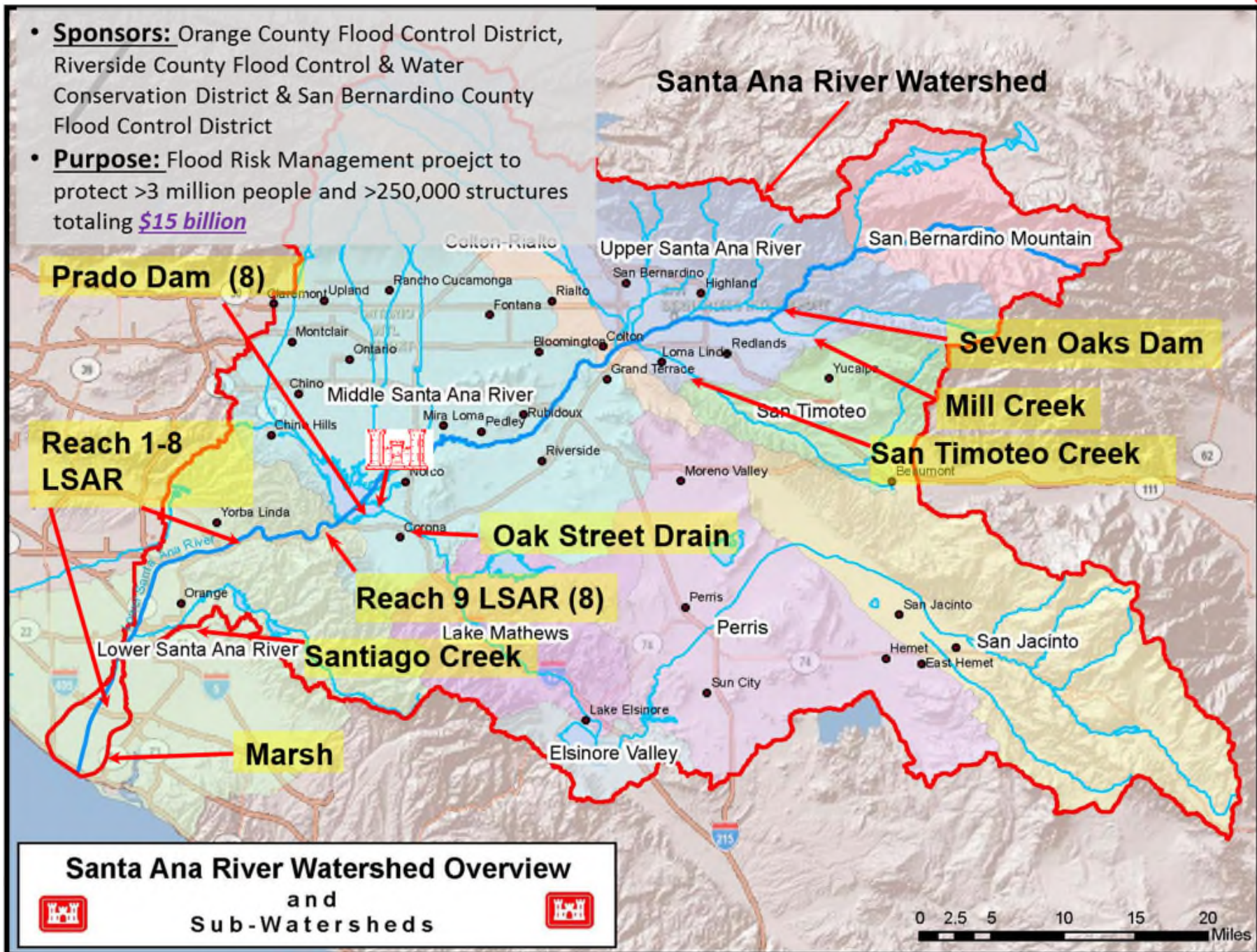
- The Los Angeles River Ecosystem Restoration Project or *Project* is defined in the Integrated Feasibility Report from September 2015. It is a \$1.4B project that will restore 11 miles of the Los Angeles River from Griffith Park to Downtown Los Angeles.
- Currently, we are in the Preconstruction and Design (PED) phase (Reaches 7&8)
- Currently, we are in the PED phase (estimated at \$8.1M, with 4 years to complete P&S for Reach 8, and long-lead activities in Reach 7)



SANTA ANA RIVER MAINSTEM PROJECT



- **Sponsors:** Orange County Flood Control District, Riverside County Flood Control & Water Conservation District & San Bernardino County Flood Control District
- **Purpose:** Flood Risk Management project to protect >3 million people and >250,000 structures totaling **\$15 billion**





U.S. ARMY

MILITARY PROGRAM

FY19 \$439M
FY18 \$317M



Edwards Air Force Base



Nellis Air Force Base



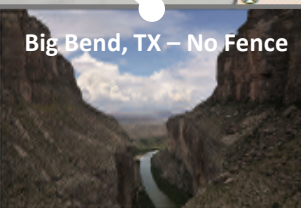
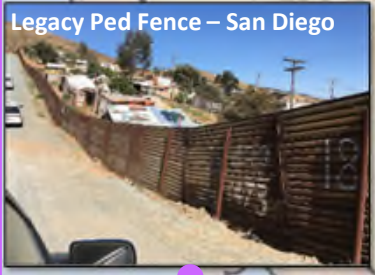
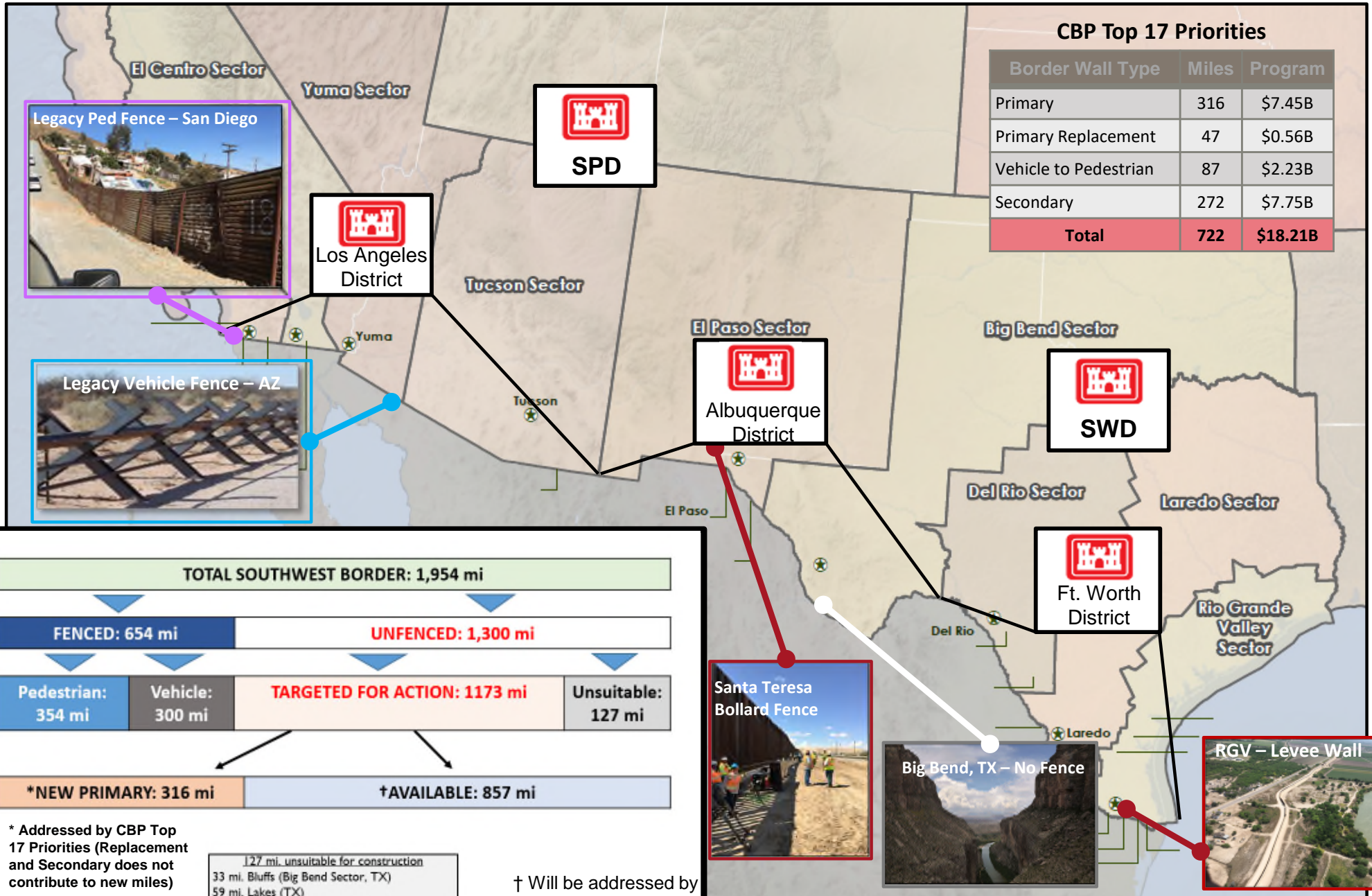
Fort Irwin NTC



FY11 Academic Training Center



BORDER INFRASTRUCTURE PROGRAM OVERVIEW



SPD

Los Angeles District

Albuquerque District

SWD

Ft. Worth District



INTERAGENCY & INTERNATIONAL SUPPORT PROGRAM



Bureau of Indian Affairs



VA Long Beach



DHS / CBP

Environmental Protection Agency



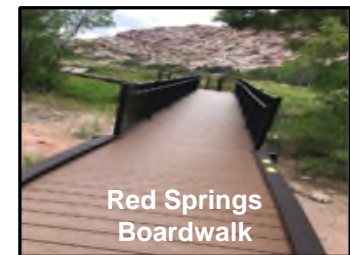
Historic Site Preservation



National Aeronautics & Space Administration



National Park Service



Red Springs Boardwalk

Bureau of Land Management



West Los Angeles VAMC



San Diego VAMC



U.S. Army Corps of Engineers Los Angeles District



COL Aaron C. Barta, PMP
Commander and District Engineer
(213) 452-3961

Aaron.C.Barta@usace.army.mil

Ms Sally DeSimone, Administrative Assistant
 (213) 452-3964

Sally.M.DeSimone@usace.army.mil

Mr. David Van Dorpe
Deputy District Engineer for Programs
and Project Management
(213) 452-3971

David.M.VanDorpe@usace.army.mil

Rich Lopez, Administrative Assistant
 (213) 452-3974

Rich.Lopez@usace.army



Ms. Danielle Nakamaru
Executive Assistant to the Commander
(213) 452-3963

Danielle.D.Nakamaru@usace.army.mil

Stephanie M. Godinez, Administrative Assistant
 (213) 452-3966

Stephanie.M.Godinez@usace.army.mil



Ms. Jennie Ayala
Outreach Coordinator
213-452-4018

Jennie.Ayala@usace.army.mil

www.spl.usace.army.mil