

Jan. 20, 2017  
CMANC

Port of **LONG BEACH**

# **CAPITAL PROGRAM UPDATE**

**Sean Gamette, P.E.**  
Program Delivery Group, Senior Director/  
Chief Harbor Engineer

An aerial photograph of the Port of Long Beach at sunset. The sky is a gradient of orange, pink, and purple. The port area is filled with numerous shipping containers, cranes, and large cargo ships docked at the piers. Several smaller boats are visible in the water. The surrounding city of Long Beach is visible in the background, with its lights beginning to glow. The text "PORT OF LONG BEACH" is overlaid in the center in a large, white, sans-serif font.

# PORT OF LONG BEACH

# PORT OF LONG BEACH

Global trade hub and regional economic engine

**2nd**

Busiest U.S. container port

**\$180**  
BILLION

Worth of trade shipped annually

**2,000**

Ships dock each year

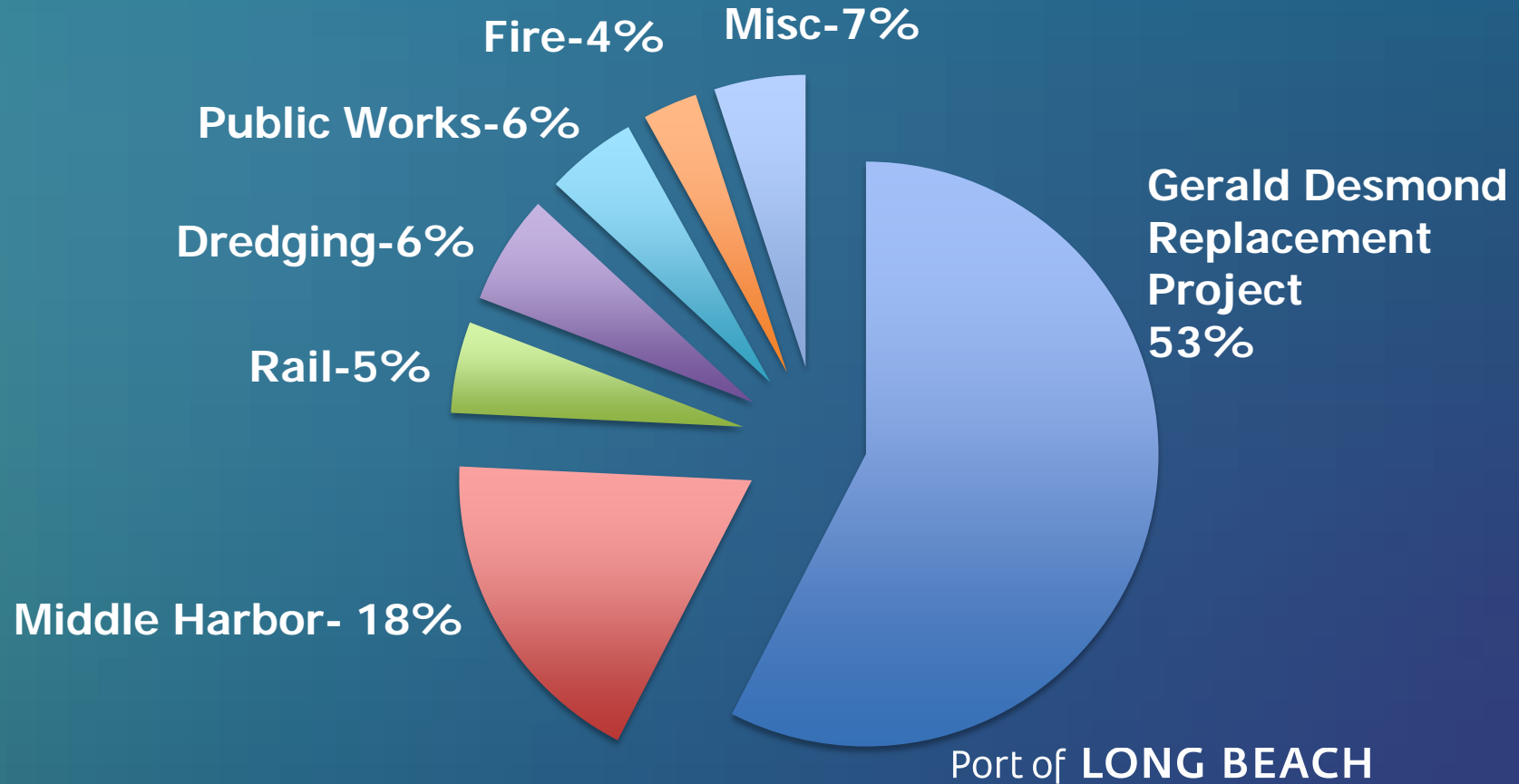
Port of **LONG BEACH**



**\$4 BILLION INVESTED THIS DECADE**



# FY17 CAPITAL PROGRAM- \$500M





**\$1.3 billion**

# Middle Harbor Terminal Redevelopment Program

Port of **LONG BEACH**



# MIDDLE HARBOR PHASE ONE







**WORLD'S GREENEST TERMINAL**





**\$1.47 BILLION BRIDGE PROJECT**

# A NEW BRIDGE FOR A NEW ERA





# Building the Approaches

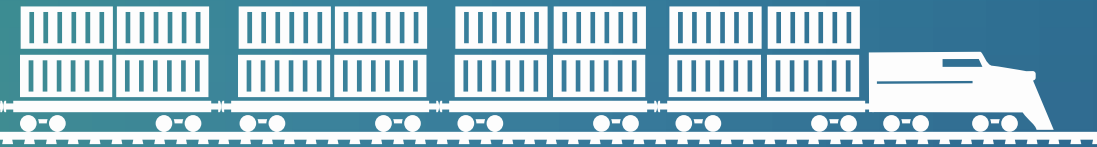




# BIG TRAINS COMING







ONE  
TRAIN =



750

Truck trips eliminated by one  
double-stacked on-dock train

Port of LONG BEACH

An aerial photograph of a port area. A long freight train with many red and blue cars is moving along a track that runs diagonally across the frame. To the left of the train are several large white oil storage tanks. To the right of the train are several large parking lots filled with cars and trucks. In the background, there are more industrial buildings and a large body of water. In the foreground, there are several multi-lane highways with overpasses and ramps. The text "AMERICA'S GREEN GATEWAY" is overlaid in white capital letters across the middle of the image.

# AMERICA'S GREEN GATEWAY





## \*Future project

### \*\*\*\*\* On-Dock Rail

## Middle Harbor On-Dock Rail Phase 2







# Terminal Island Wye Realignment







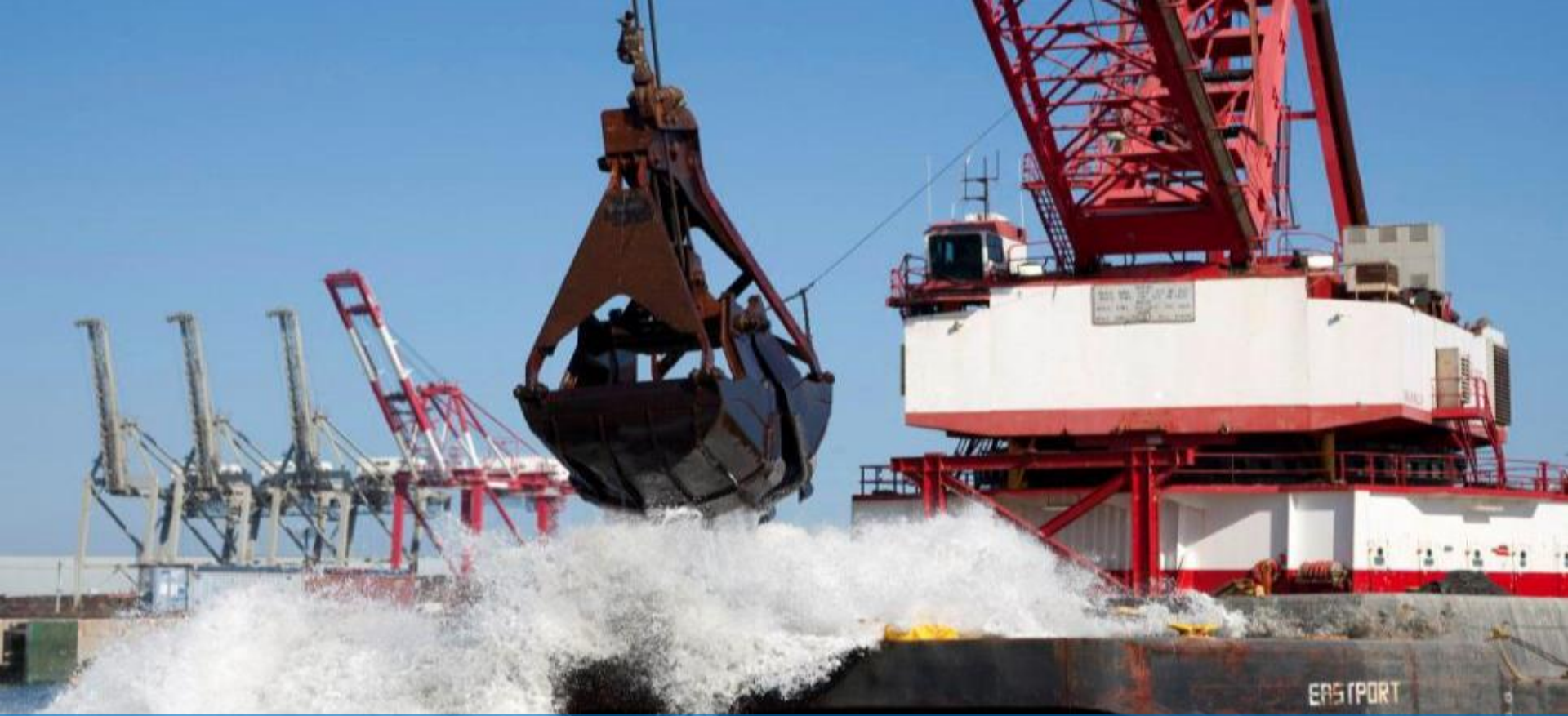
Pier G to Pier J  
Double Track  
Access

On-Dock Rail

# SAFETY and SECURITY

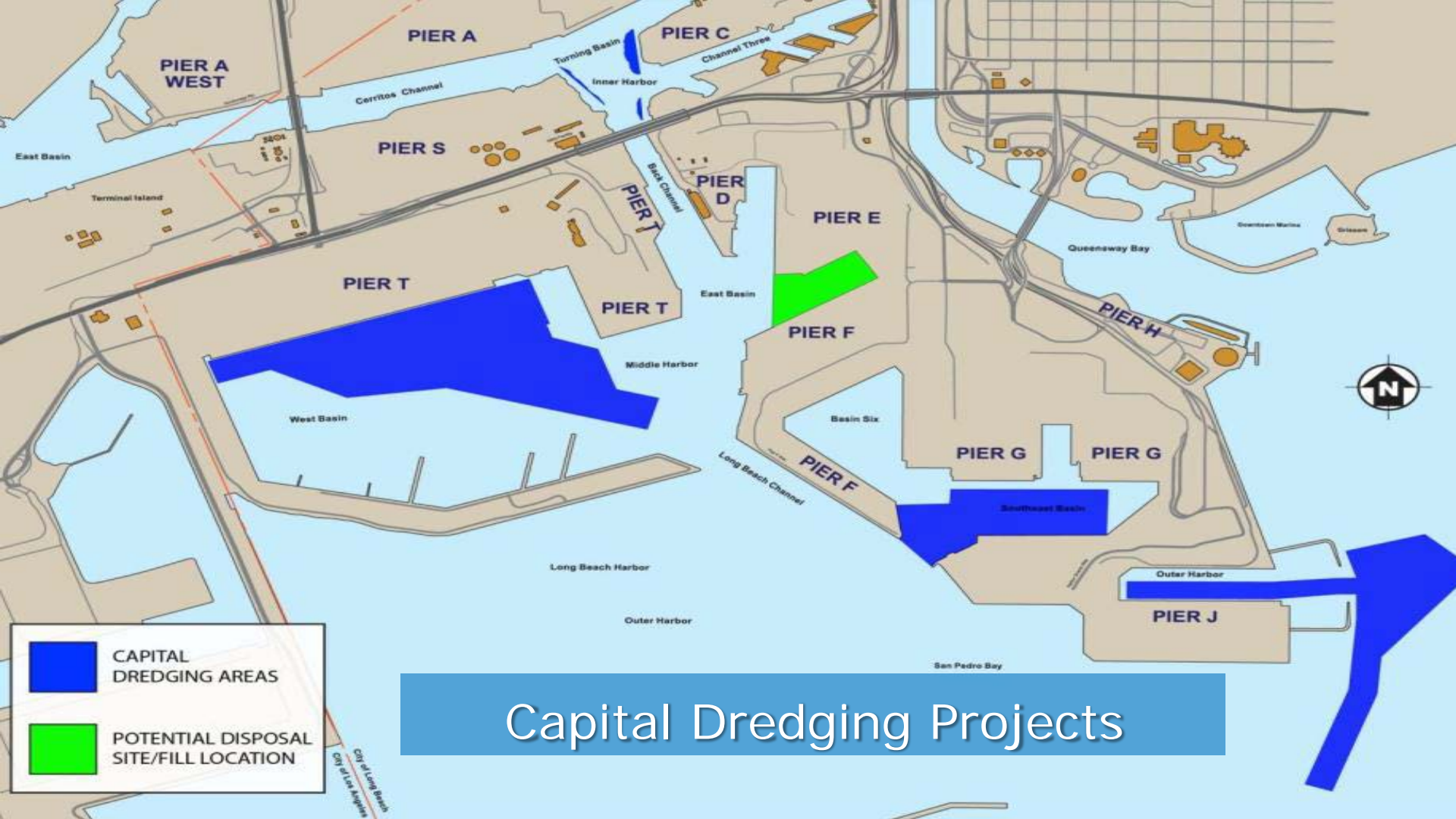






# Capital Dredging Projects

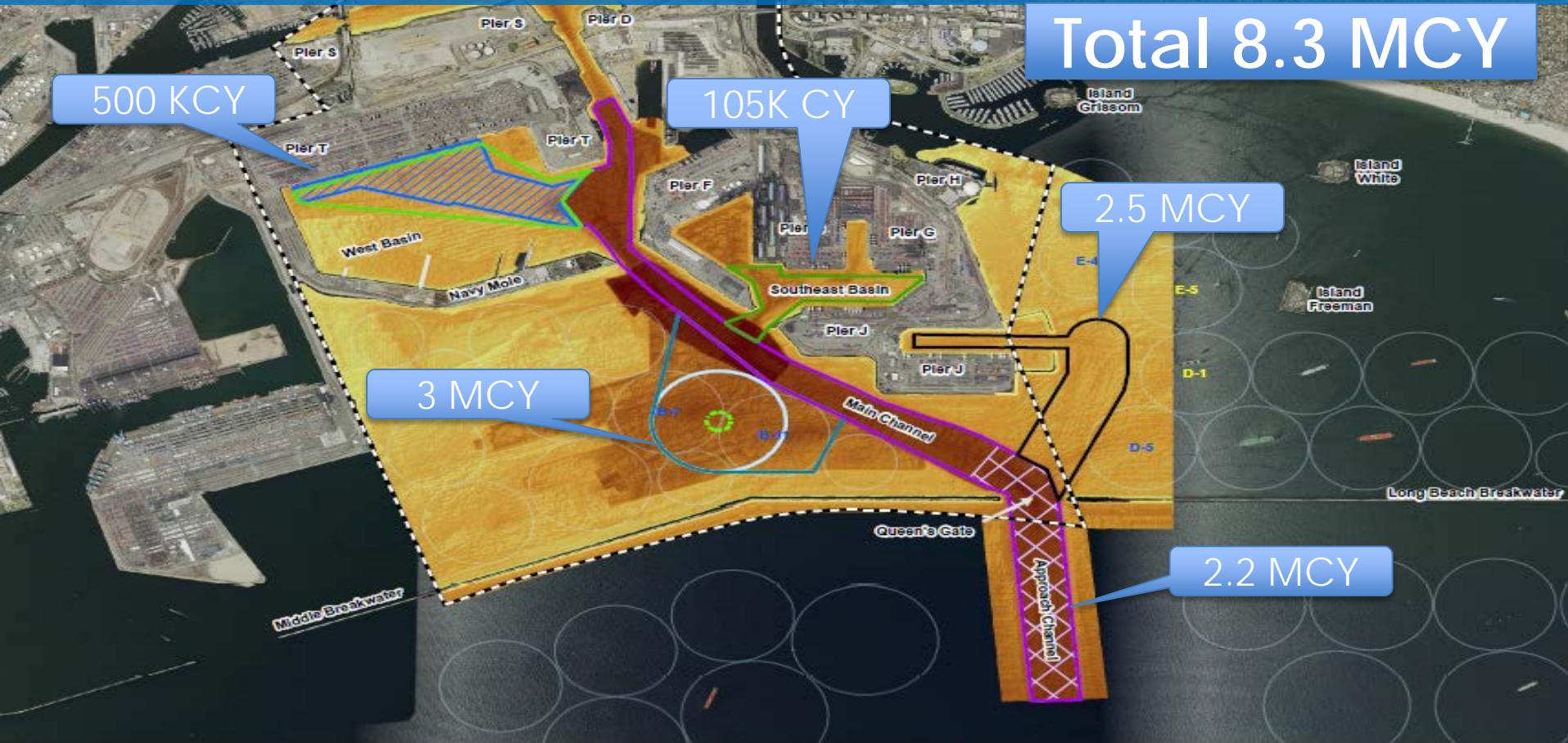
Port of **LONG BEACH**



# Capital Dredging Projects



# Deep Draft Navigation Study





# Roads, Water System, Sewers

Port of **LONG BEACH**



# WHAT'S COMING UP?

Fireboat Station No. 15

Field Support & Operations Building

Portwide Infrastructure – Streets, Sewers, etc.

Demolition of Former Administration Building

# FINDING OPPORTUNITIES

[www.polb.com](http://www.polb.com)

- Contractors/Vendors
  - POLB Vendor Portal
  - Future Work





# ENERGY INITIATIVE



A white and green Hub Group forklift is moving a large green container at a port. The container has "HGU 649859" and "Hub Group" written on it. The forklift has "5530" and "CAPACITY" written on its front. In the background, a red gantry crane is lifting a blue container labeled "CORNOS". Other forklifts and workers are visible in the distance.

# CLEAN AIR ACTION PLAN



# 2015 AIR EMISSIONS INVENTORY

**Diesel  
Particulate  
Matter**

Down

**84%**

**Nitrogen  
Oxides**

Down

**48%**

**Sulfur  
Oxides**

Down

**97%**

**Greenhouse  
Gases**

Down

**14%**

Up **7%**

**TEUs**

\*Compared to 2005 Levels

Port of **LONG BEACH**



# GREEN PORT OF THE FUTURE