

# Port of Long Beach Capital Program Update-

## CMANC Winter Conference

Jan 2013

Doug Thiessen, D.P.E  
Managing Director of Engineering

# Port of Long Beach

- 3,500 acres of land
- 4,600 acres of water
- 6 container terminals
- 66 ship-to-shore cranes
- 76-foot-deep main channel



# Investing in the future



- Port of Long Beach is fiscally strong,
- investing \$4.5 billion in terminal, infrastructure improvements

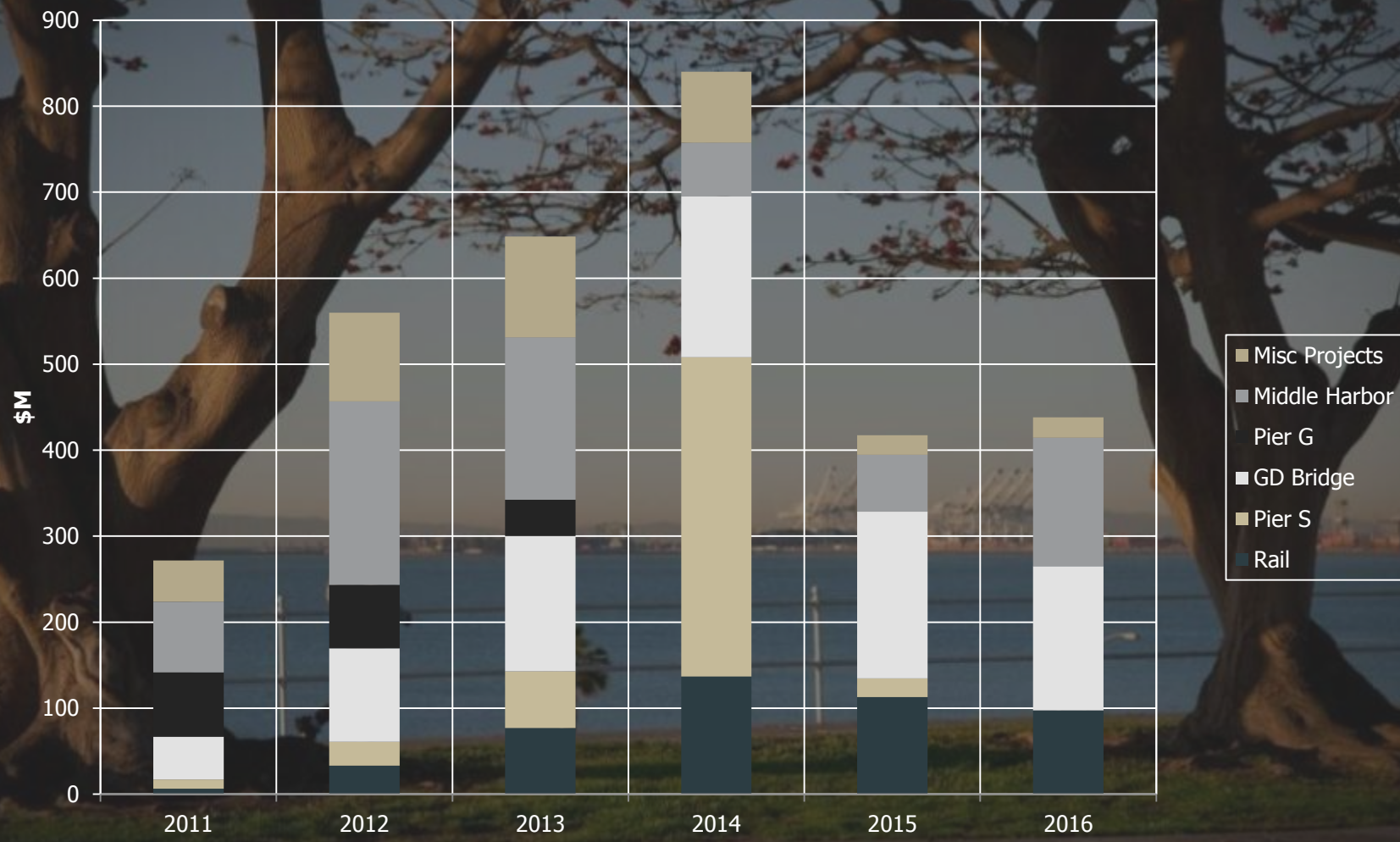


# Capital Improvement Program

- 10-Year Program
- Total \$4.5 billion
- Terminal Optimization
- Bridge & Roadway
- Rail
- Navigation
- Safety/Security
- Environmental



# Projected Capital Expenditures





# Capital Improvement Program

- Terminals \$2.0 billion
- Bridge Replacement \$1 billion
- Rail \$1.3 billion
- Navigation/Dredging \$32 million
- Safety/Security \$48 million
- Total ----- \$ 4.5 billion plus



# Anticipated for 2013

## **Middle Harbor**

- Pier E, Power Shop & Crane Maintenance & Repair Bldg. & Marine Ops. Bldg
- Pier E, Auxiliary Maintenance Facility
- Pier E, Battery Exchange Building

## **Gerald Desmond Bridge & Related Projects**

- GDB, 42 Force main - Pump Station Outfall to Back Channel
- SCE Tunnel Demolition
- GDB, NRG Facilities Relocation/Demolition

## **Pier G Redevelopment**

- Pier G, East Terminal Site Redevelopment

## **Roadway Improvements**

- Anaheim Street Rehabilitation
- 12th Street & Canal Pavement Reconstruction
- Edison Avenue Street Improvement Program

## **Miscellaneous**

- Pico Ave. 20" Water Valve Replacement
- Demo. of NRG Intake Fore Bay Structure
- Pier C, Upgrade of Water Facilities
- Tesoro Facility Improvements
- Harbor Scenic Drive Water Valve Replacement
- Pier F, Cut-Off Wall & Pavement Rehab.
- Pier G, Metro Track Improvements
- Maintenance Dredging



# Bigger ships – 14,000 TEUs



- Next generation vessels will be more than twice as big
  - as today's 7,000-TEU ships



# Existing Middle Harbor Terminals





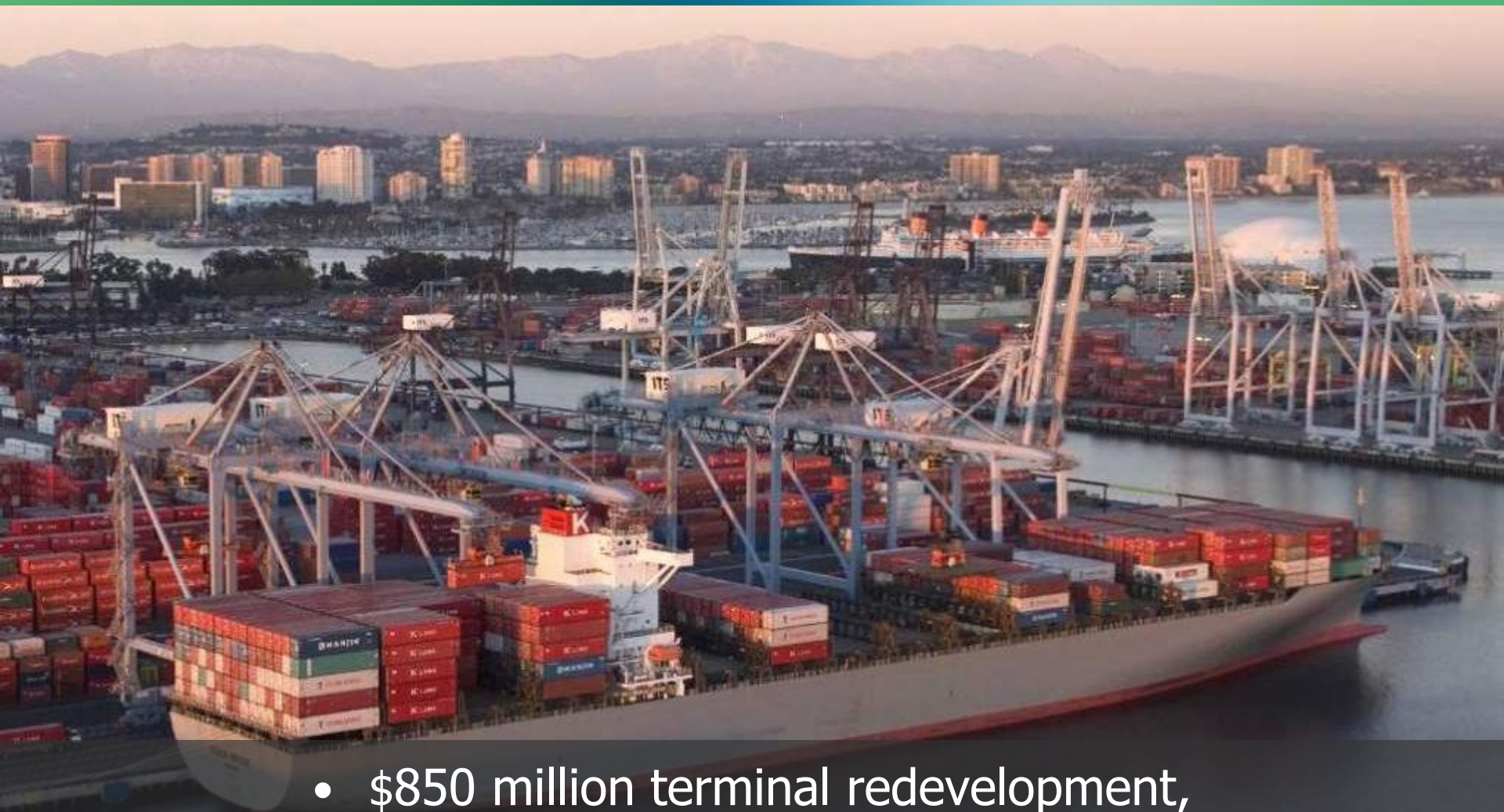
# Middle Harbor



Middle Harbor Project will improve terminal efficiency,  
cut pollution 50%, create 14,000 new jobs

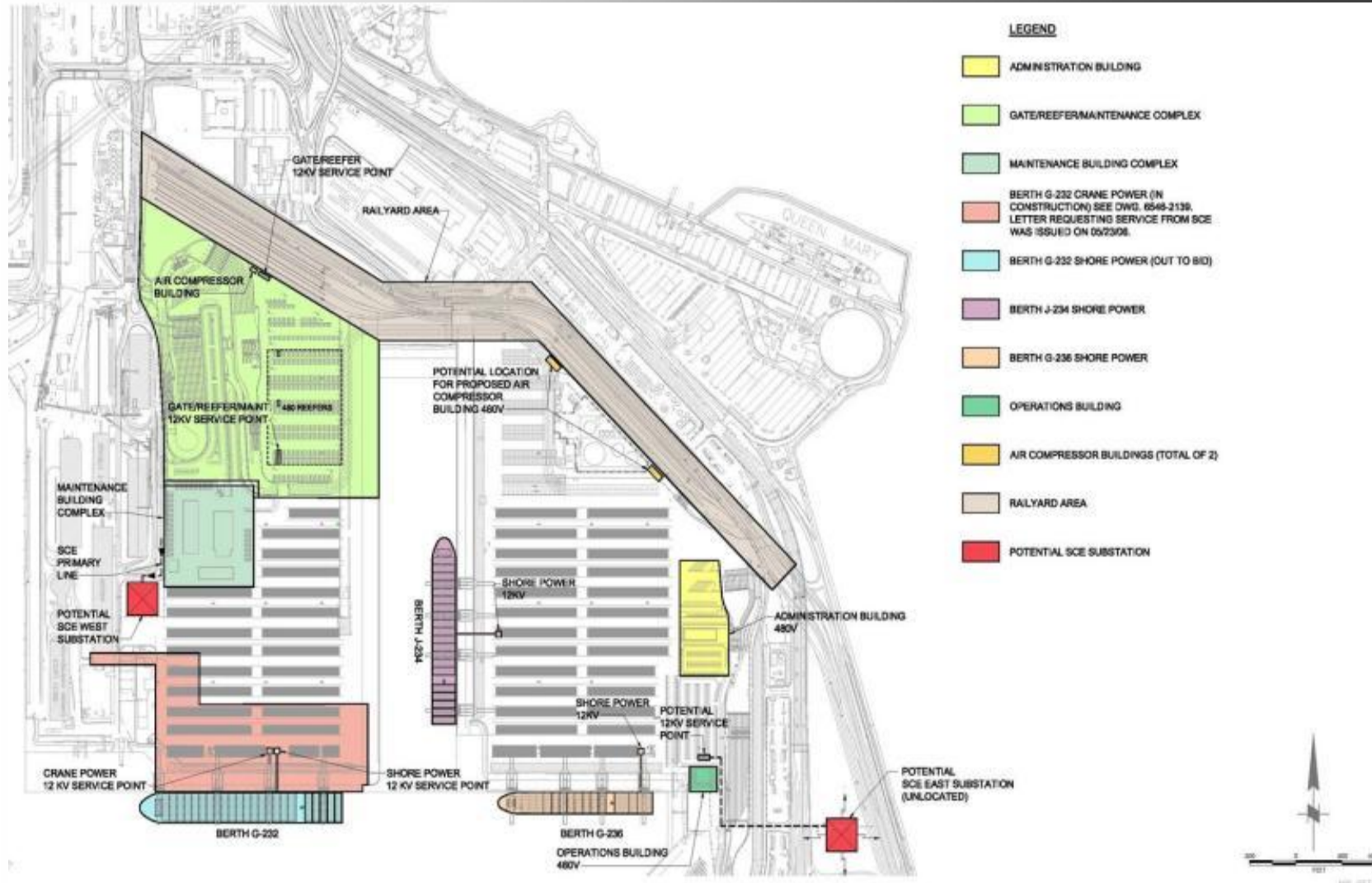


# Pier G Redevelopment



- \$850 million terminal redevelopment,
- adding deep-water berths & expanding on-dock rail

# Pier G Redevelopment Program





# Pier S terminal project



- New \$600 million green shipping terminal
  - would support 35,000 new jobs



# Gerald Desmond Bridge



- Replacing obsolete bridge with a \$950 million replacement
  - to improve traffic flow and safety



# New Gerald Desmond Bridge



- Bids opened. \$650 D/B contract. \$1B project takes about 4 years to complete



# Rail Enhancements



\$1.3 billion in projects to expand rail yard,  
realign tracks to support increased on-dock rail operations



# Back Channel Navigation







- In 2005, the Board of Harbor Commissioners approved
  - the Green Port Policy – changing the Port forever



# Green Port Policy

- Protect the community from harmful impacts of Port operations
- Distinguish the Port as leader in environmental stewardship
- Promote sustainability
- Employ best available technology
- Engage and educate the community

# Shore-to-Ship Power

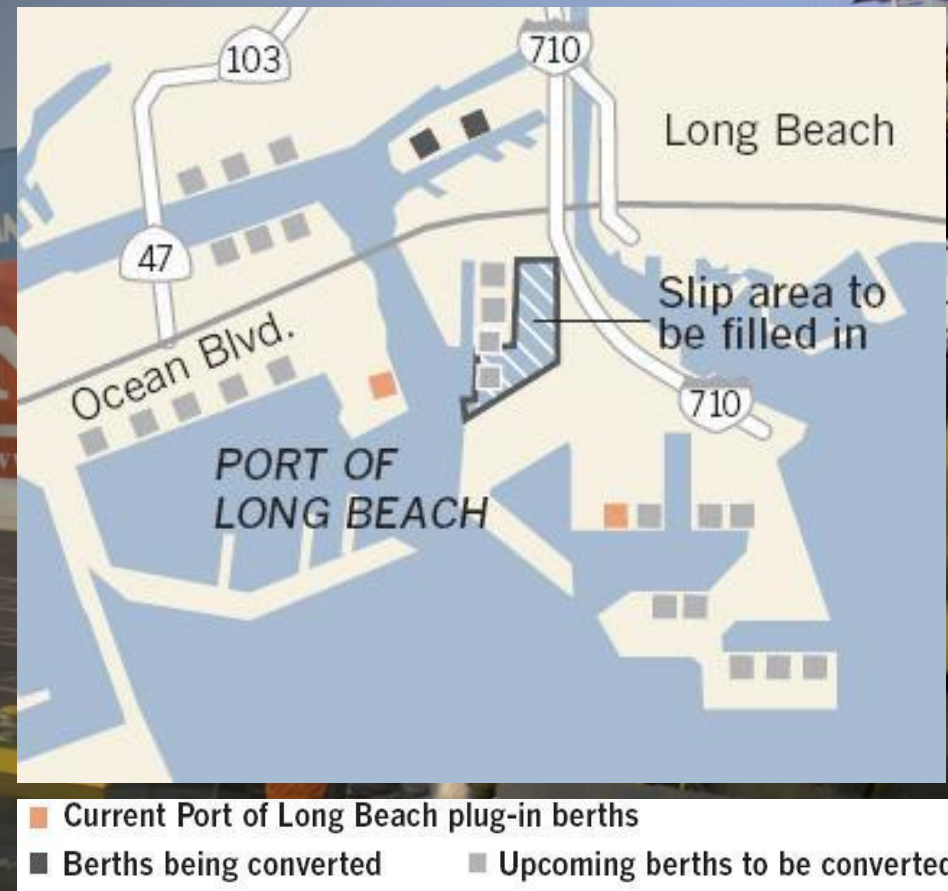


- Ships switch off engines and shift to shore power
  - to improve air quality



# Port-wide plug-in

- \$200 million in SSP Infrastructure
- By 2014, 50% of container ships will plug in to shore power
- By 2020, 80% of container ships will plug in to shore power



# Sustainability



- Sustainability in engineering
- LEED “Green Building” program
- Construction waste recycling
- Sustainable landscape palette
- Alternative Power
- Sustainable storm water design
- Shore-to-ship Power
- POLB Sustainable Design and Construction Guidelines



# Questions?

