

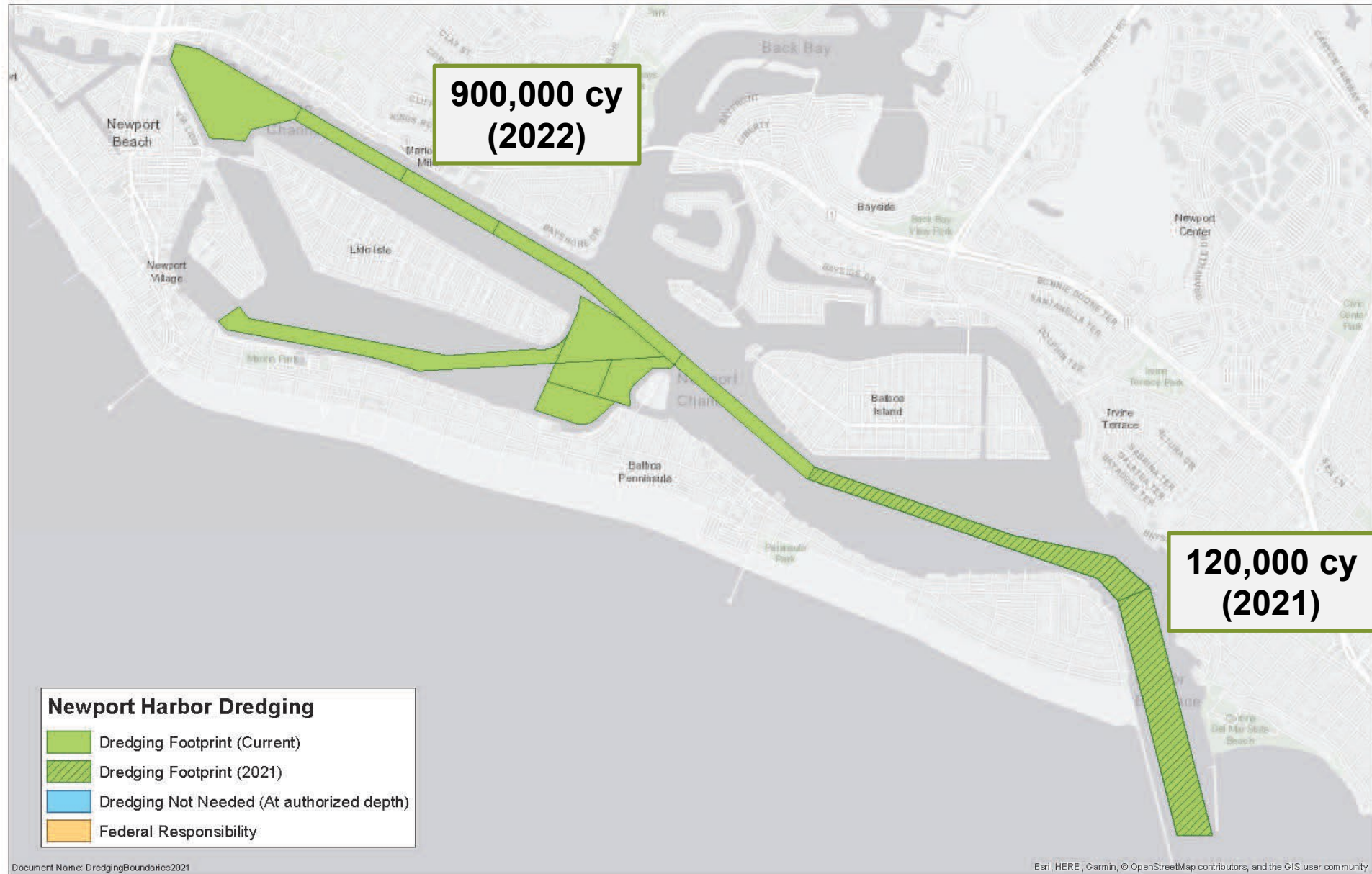
Lower Newport Harbor: Dredging & Confined Aquatic Disposal (CAD)

Chris Miller
Public Works Manager
City of Newport Beach



CMANC
San Pedro
May 19, 2022

2021-22 Dredge



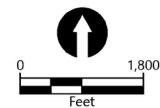




SOURCE: Drawing prepared from Bing maps. Bathymetric contours from U.S. Army Corps of Engineers survey dated September 2021. Dredge units from U.S. Army Corps of Engineers.
HORIZONTAL DATUM: California State Plane, Zone 6, NAD83
VERTICAL DATUM: Mean Lower Low Water (MLLW)

LEGEND:

- Authorized Federal Channel Limits and Dredge Unit Boundaries
- Authorized Depth
- Existing Bathymetry
- Dredged Material Not Suitable for Open Ocean or Nearshore Disposal
- Dredged Material Suitable for Open Ocean or Nearshore Disposal
- Proposed Confined Aquatic Disposal Facility
- Nearshore Placement Area



Publish Date: 2022/04/15 3:15 PM | User: mpratschner
 Filepath: K:\Projects\0243-City of Newport Beach\Federal Channel\0243-RP-036 2021 DREDGE SUITABILITY.dwg Figure J-3

2011-12
Dredging
solution:

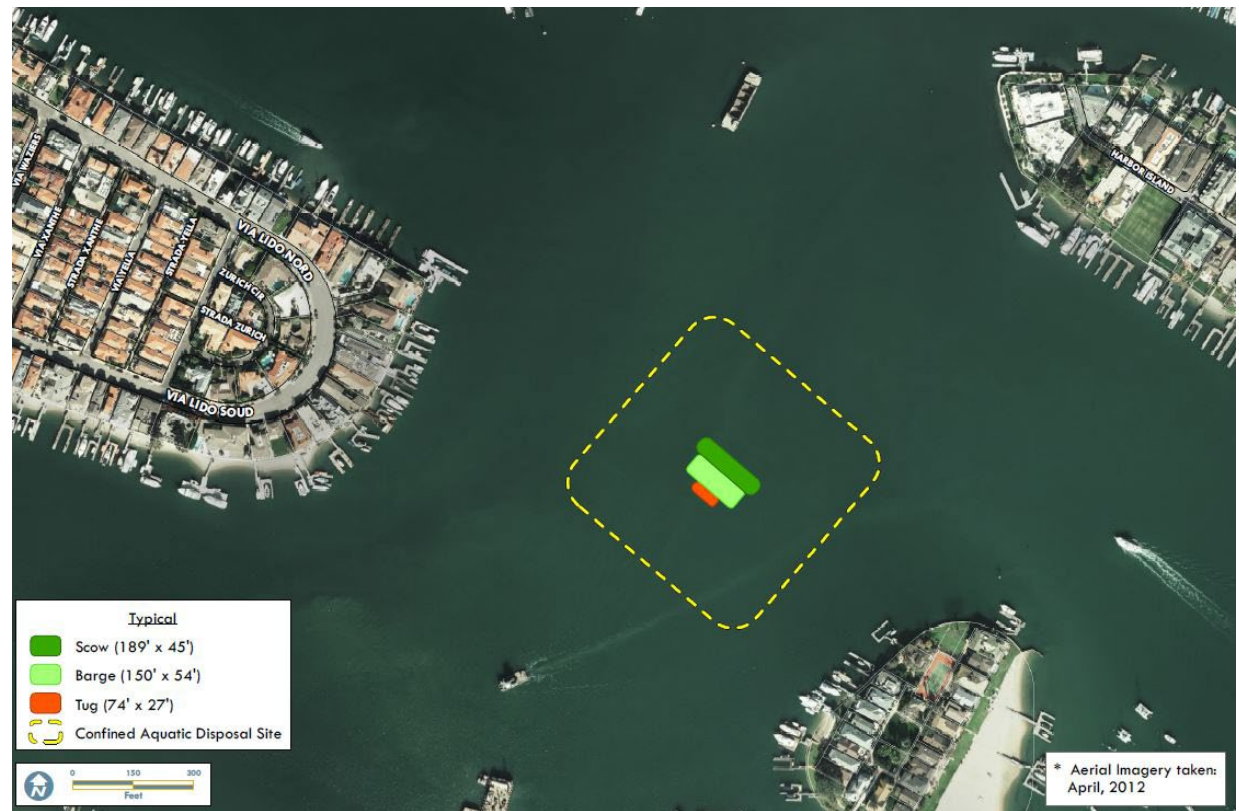
Disposal at POLB

**2011-12 Port of Long Beach Disposal
Rhine Channel & Lower Bay**

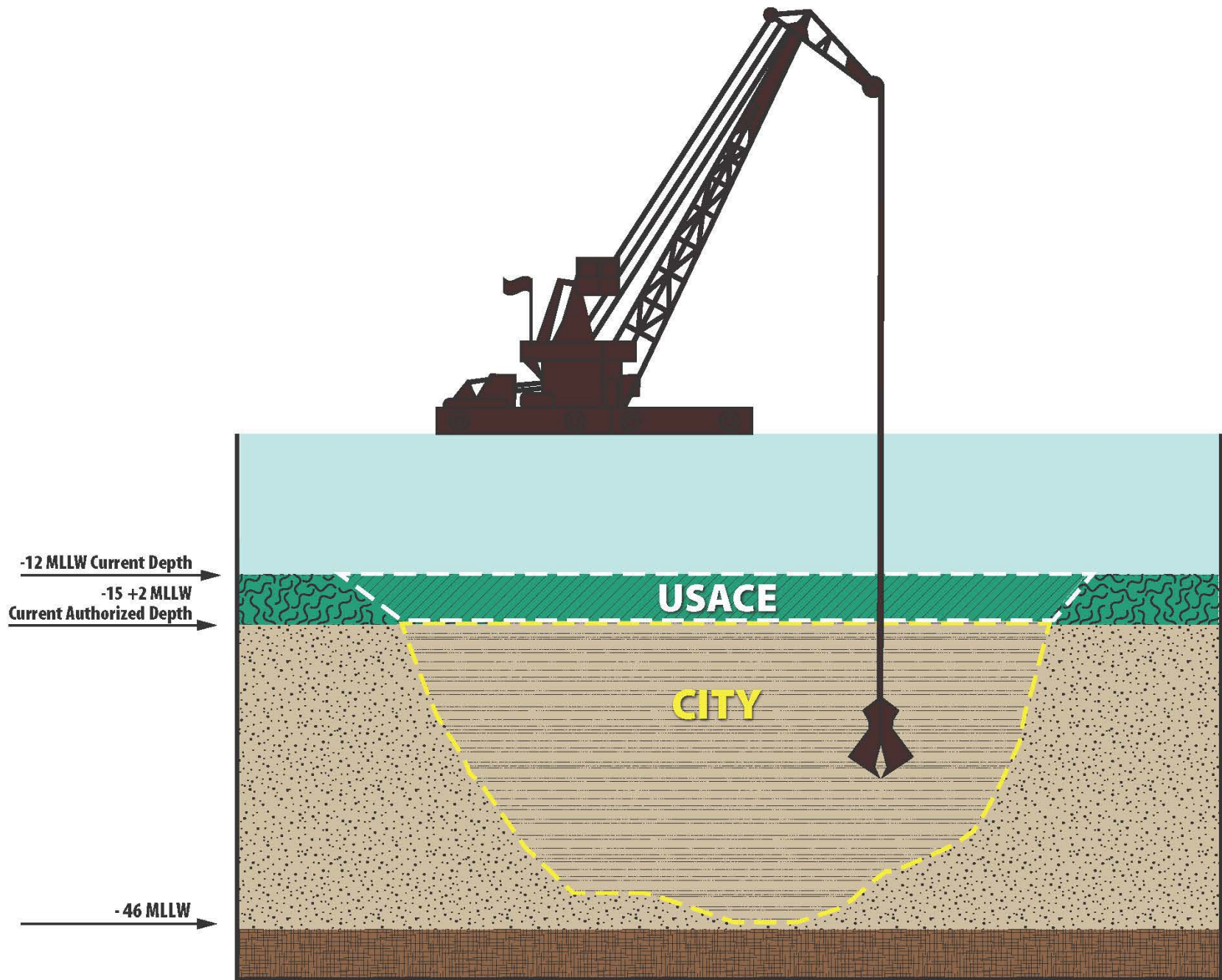


CAD Location

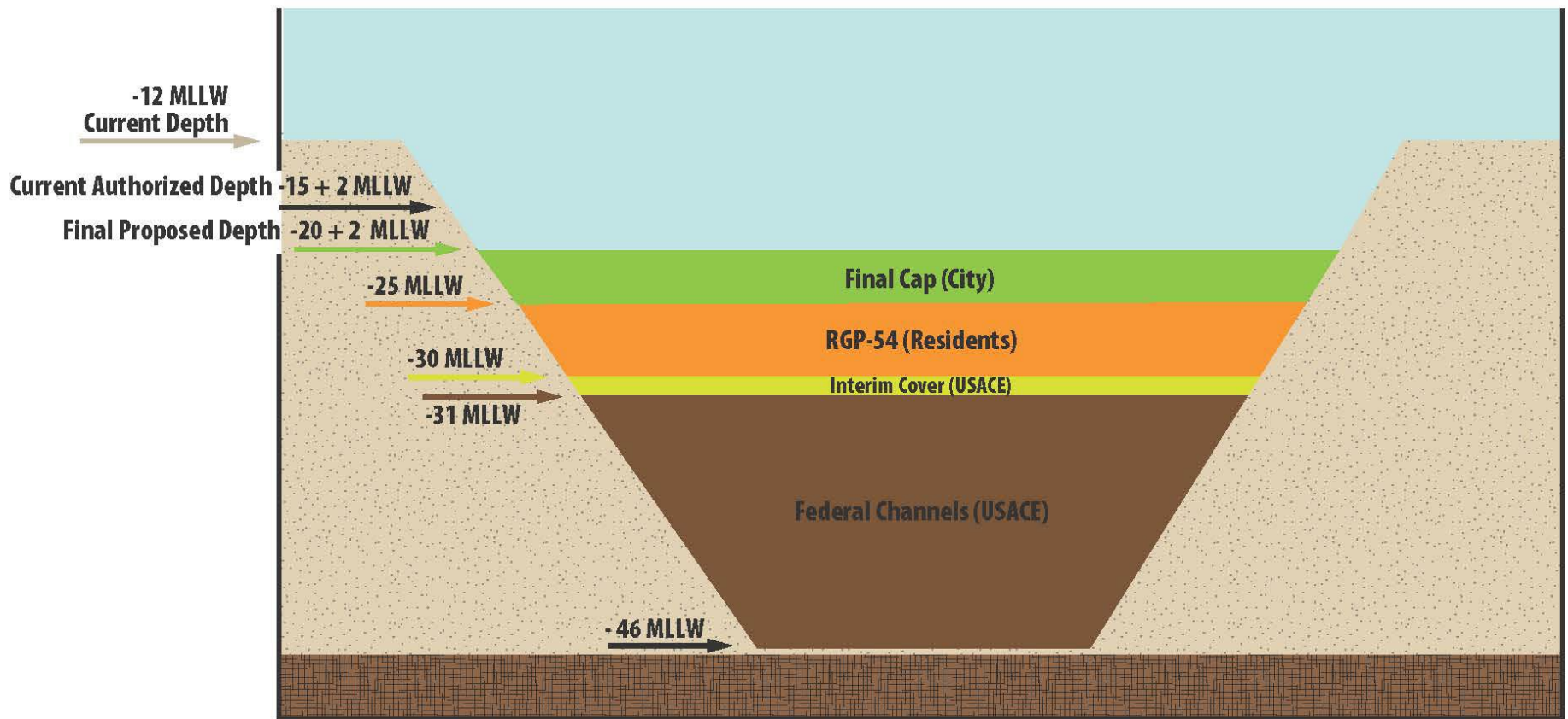
Single, *Centralized* *Location*



- Equal proximity to unsuitable material (reduces transit time, disruption and cost)
- Deeper water = maximizes scow capacity
 - Reduces timeline, cost and emissions
- Not a known eelgrass area
- Area already required to be dredged



Excavation Responsibilities



Fill Responsibilities

Question and Comments?



Chris Miller

cmiller@newportbeachca.gov

(949) 644-3043

www.newportbeachca.gov/harbordredging