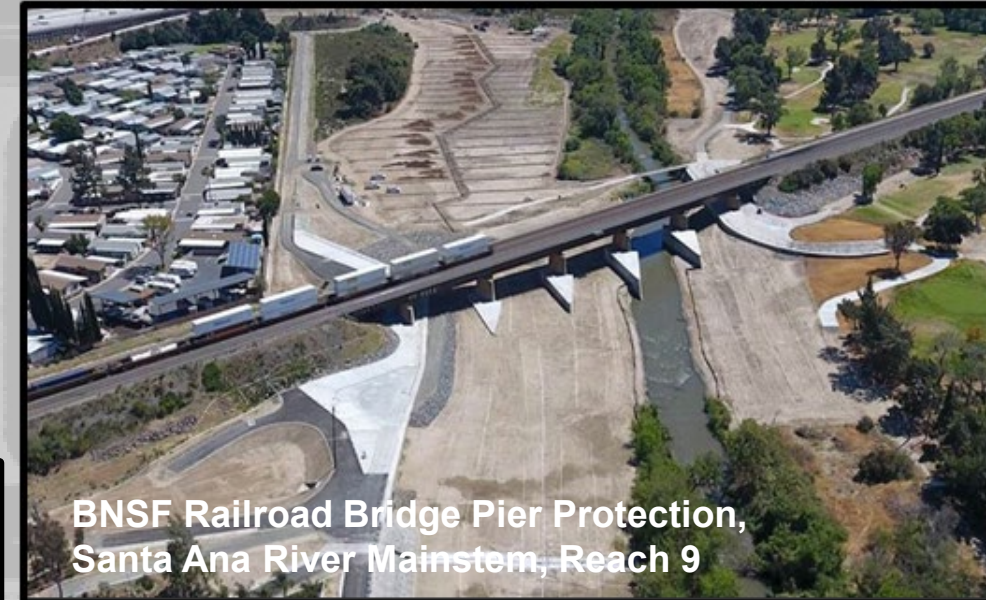
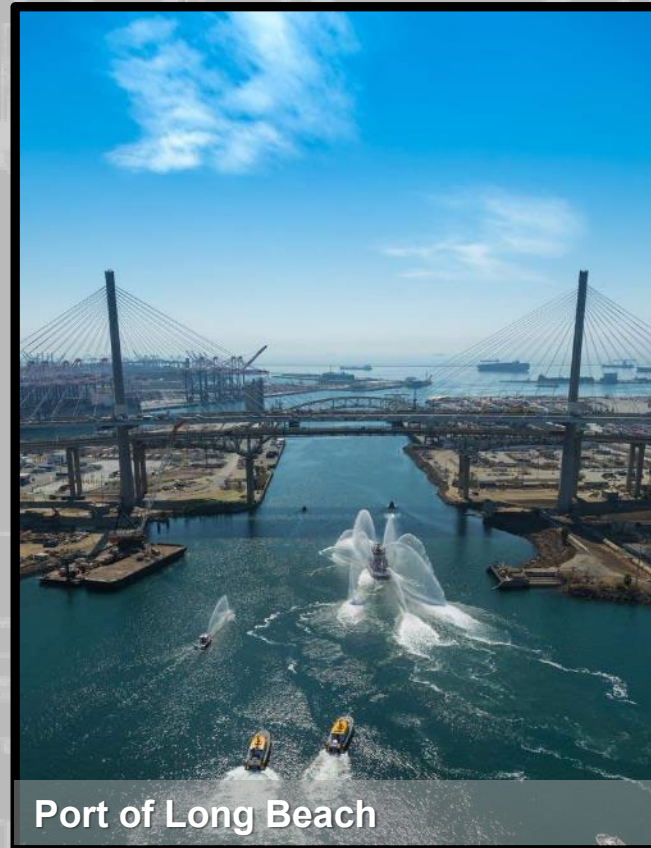


# USACE NAVIGATION – NATIONAL AND REGIONAL PERSPECTIVE

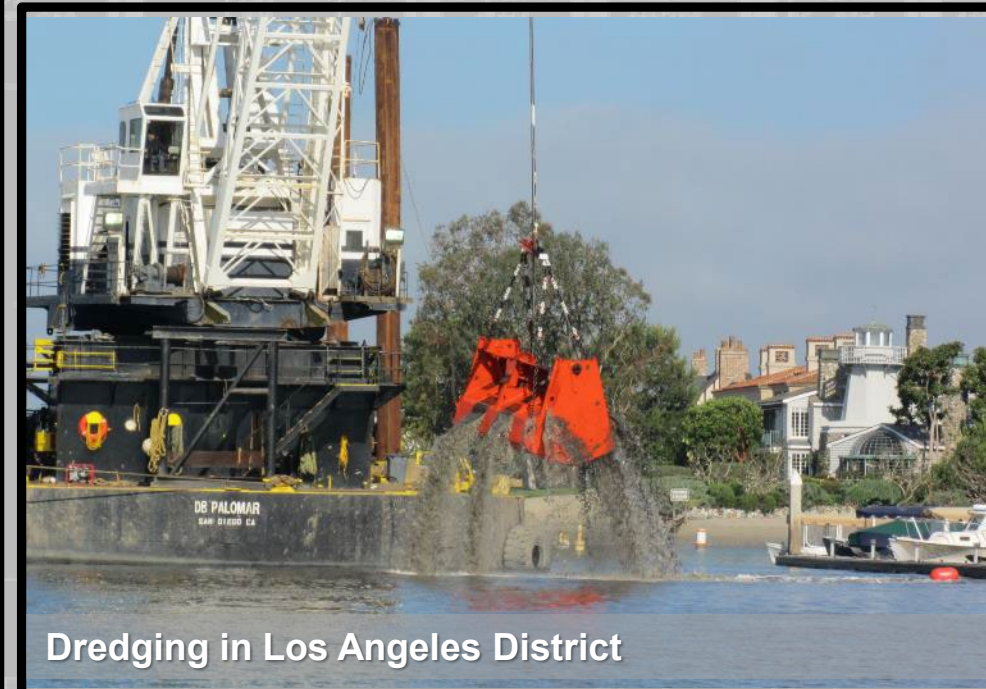
California Marine Affairs and Navigation  
Conference  
May 18, 2022



BNSF Railroad Bridge Pier Protection,  
Santa Ana River Mainstem, Reach 9



Port of Long Beach



Dredging in Los Angeles District



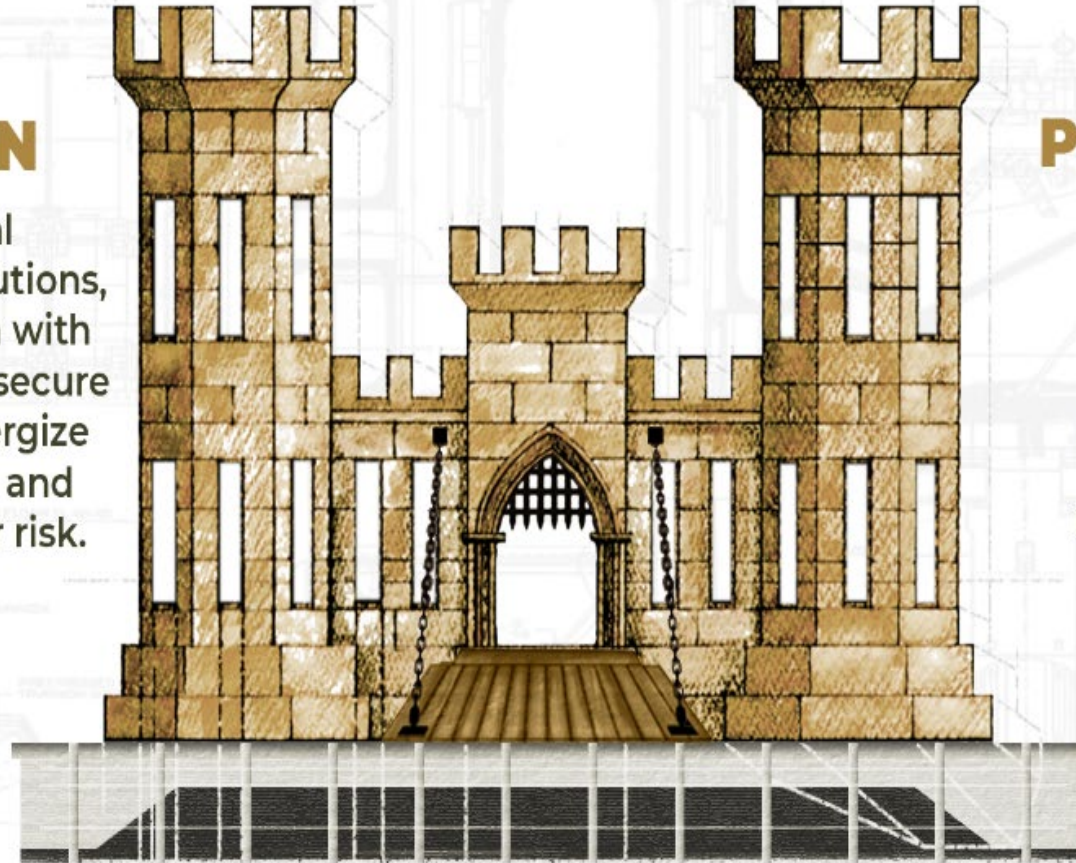
US Army Corps  
of Engineers®



# U.S. ARMY CORPS OF ENGINEERS

## MISSION

Deliver vital engineering solutions, in collaboration with our partners, to secure our Nation, energize our economy, and reduce disaster risk.



## PRIORITIES

PEOPLE

READINESS

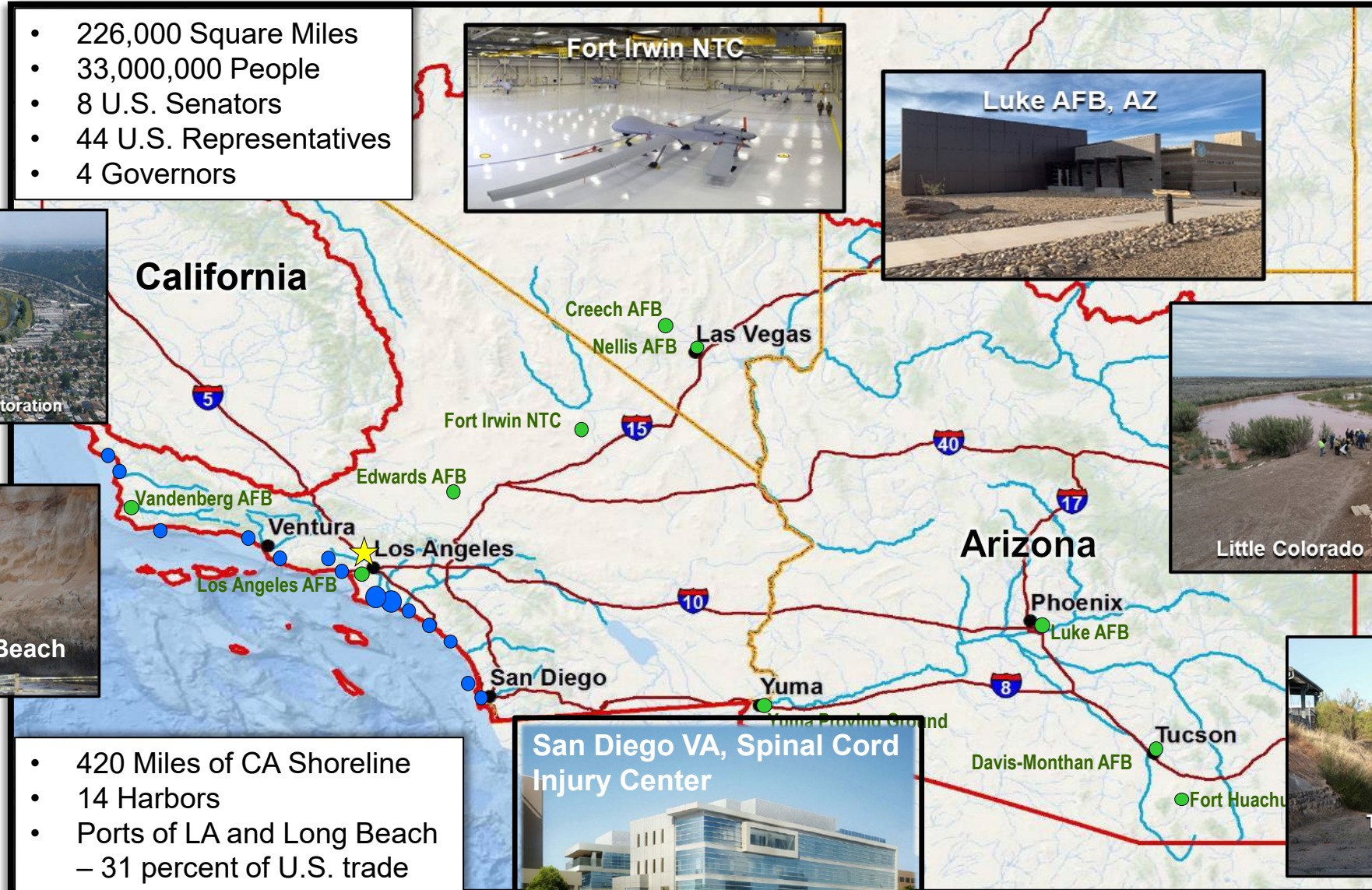
PARTNERSHIPS

REVOLUTIONIZE

**ENGINEERING SOLUTIONS FOR THE NATION'S TOUGHEST CHALLENGES**

# LOS ANGELES DISTRICT

- 226,000 Square Miles
- 33,000,000 People
- 8 U.S. Senators
- 44 U.S. Representatives
- 4 Governors



- 420 Miles of CA Shoreline
- 14 Harbors
- Ports of LA and Long Beach – 31 percent of U.S. trade





# DELIVER THE PROGRAM

## Civil Works



**PRADO DAM**



**WHITTIER NARROWS**



**LA COUNTY DRAINAGE AREA**



**LITTLE COLORADO  
RIVER AT WINSLOW**

The US Army Corps of Engineers' Civil Works mission is varied and wide-ranging. Its multi-purpose projects provide benefits for:

- Flood Risk Management
- Environmental Enhancement
- Wildlife Habitat Restoration and Protection
- Regulatory Program
- Navigation
- Recreation

South Pacific Division hosts a diverse scale of Civil Works projects:

- \$2.5B in long term investment construction program focused on flood risk resiliency.

In the Los Angeles District:

- Dam, levee and channel operations in partnership with Los Angeles County including Whittier Narrows Dam.
- Prado Dam and the Santa Ana River
- LA County Drainage Area
- Little Colorado River Flood Control Project at Winslow, Arizona.
- Rio de Flag Flood-Risk Management Project in Flagstaff, Arizona.



# INFRASTRUCTURE, INVESTMENT AND JOBS ACT



- FY22: USACE received \$22.81 billion in supplemental funding provided in two recently enacted laws — the IIJA and the 2022 Disaster Relief Supplemental Appropriations Act.
- Some of the major projects funded for LA District, include:
  - Navigation improvements at the Port of Long Beach in Los Angeles
  - Los Angeles River Ecosystem Restoration Project
  - Shoreline protection along the San Diego County coastline
  - Little Colorado River Flood-Risk Management Project, Winslow, Arizona
- The supplemental funding under the IIJA will continue to strengthen our economy and our partnerships here in the Pacific Southwest, assist with building and maintaining much-needed infrastructure in our communities, protect our vital shorelines from coastal erosion, and assist our ports and harbors by keeping our federal waterways safe and navigable.



# PRESIDENT BIDEN'S JUSTICE40 INITIATIVE

6



## WHAT IS IT?

- ❖ Justice40 Initiative - Aims to deliver 40 percent of the overall benefits of relevant federal investments to disadvantaged communities.
- ❖ Executive Order 12898 - Federal Actions to Address Environmental Justice in Minority Populations and Low-Income Populations
- ❖ Executive Order 14008 - Tackling the Climate Crisis at Home and Abroad (Environmental Justice)



EO 12898 Signing





# CIVIL WORKS & ENVIRONMENTAL JUSTICE





## ENGAGING COMMUNITIES AND DELIVERING HOLISTIC AND INNOVATIVE WATER SOLUTIONS

### ■ Environmental Justice Literacy:

- Develop series of training sessions to ensure SPL divisions understand the basics of EJ laws and policies, where EJ intersects with critical mission areas, and how it applies to technical disciplines
- Ensure PDT's have their EJ analysis reviewed by IWR EJ specialists

### ■ Community Engagement:

- Develop a standard EJ communication plan template for PDT's to include with PMP focused on Urban/Tribal/Rural communities. Engage communities beginning/middle/end of a project and annually if needed.

### ■ Pair Natural and Engineering Features to Ensure Resiliency

- Coordinate with real estate, tribes and landscape specialist to identify natural conservation methods to enhance construction projects

### ■ Identify Program and Partnering Opportunities

- Identify best programs (i.e CAP/PAS/FPMS/Silver Jackets, etc) in focused communities, to assess water systems/infrastructure needs and partner with other state/local/private entities that may assist in meeting funding requirements or seek OSE exemption where applicable



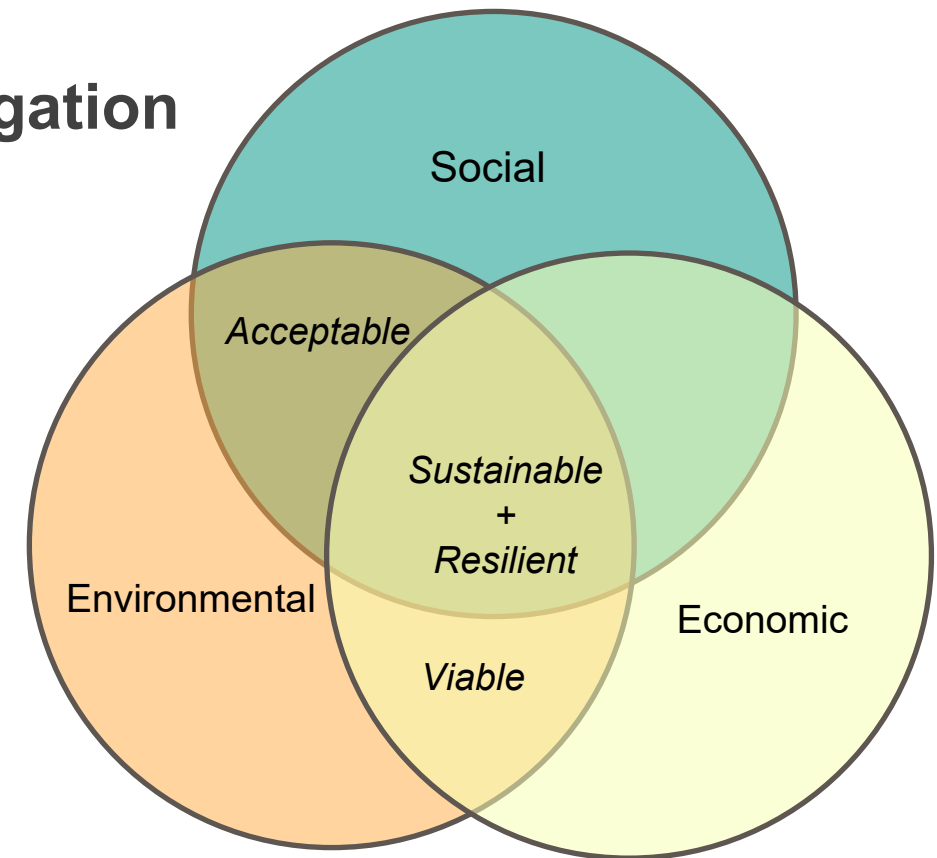


# ENGINEERING WITH NATURE (EWN)



**An engineering philosophy that uses natural and processes to deliver a number of economic, environmental, and social benefits, including:**

- Flood, coastal storm, and erosion risk mitigation
- Ecosystem restoration
- Public health
- Improved social cohesion, equity
- Recreation
- Climate resilience





# U.S. Army Corps of Engineers Los Angeles District

[www.spl.usace.army.mil](http://www.spl.usace.army.mil)

10



**COL Julie A. Balten**  
**Commander and District Engineer**  
**(213) 452-3961**

[Julie.A.Balten@usace.army.mil](mailto:Julie.A.Balten@usace.army.mil)

Ms. Sally DeSimone, Administrative Assistant  
(213) 452-3964

[Sally.M.DeSimone@usace.army.mil](mailto:Sally.M.DeSimone@usace.army.mil)

**Mr. David Van Dorpe**  
**Deputy District Engineer for Programs**  
**and Project Management**  
**(213) 452-3971**

[David.M.VanDorpe@usace.army.mil](mailto:David.M.VanDorpe@usace.army.mil)

Kenneth Reed, Administrative Assistant  
(213) 452-3974

[Kenneth.Reed@usace.army.mil](mailto:Kenneth.Reed@usace.army.mil)

**Ms. Lisa A. Lugar**  
**Executive Assistant to the Commander**  
**(213) 452-3963**

[Lisa.A.Lugar@usace.army.mil](mailto:Lisa.A.Lugar@usace.army.mil)

Portia Pham, Administrative Assistant  
(213) 452-3965

[PortiaXena.D.Pham@usace.army.mil](mailto:PortiaXena.D.Pham@usace.army.mil)



**Ms. Jennie Ayala**  
**Outreach Coordinator**  
**213-452-4018**

[Jennie.Ayala@usace.army.mil](mailto:Jennie.Ayala@usace.army.mil)

*Thank You!*

Angels Gate Lighthouse, San Pedro Breakwater