

SOUTH PACIFIC DIVISION OPERATIONS & REGULATORY UPDATE

Tori White
Operations & Regulatory Chief
South Pacific Division

Heather Schlosser
Navigation & Coastal Program Manager
South Pacific Division

Date: SEP 2023



US Army Corps
of Engineers®



San Francisco Main Ship Channel



Port of Long Beach



U.S. ARMY

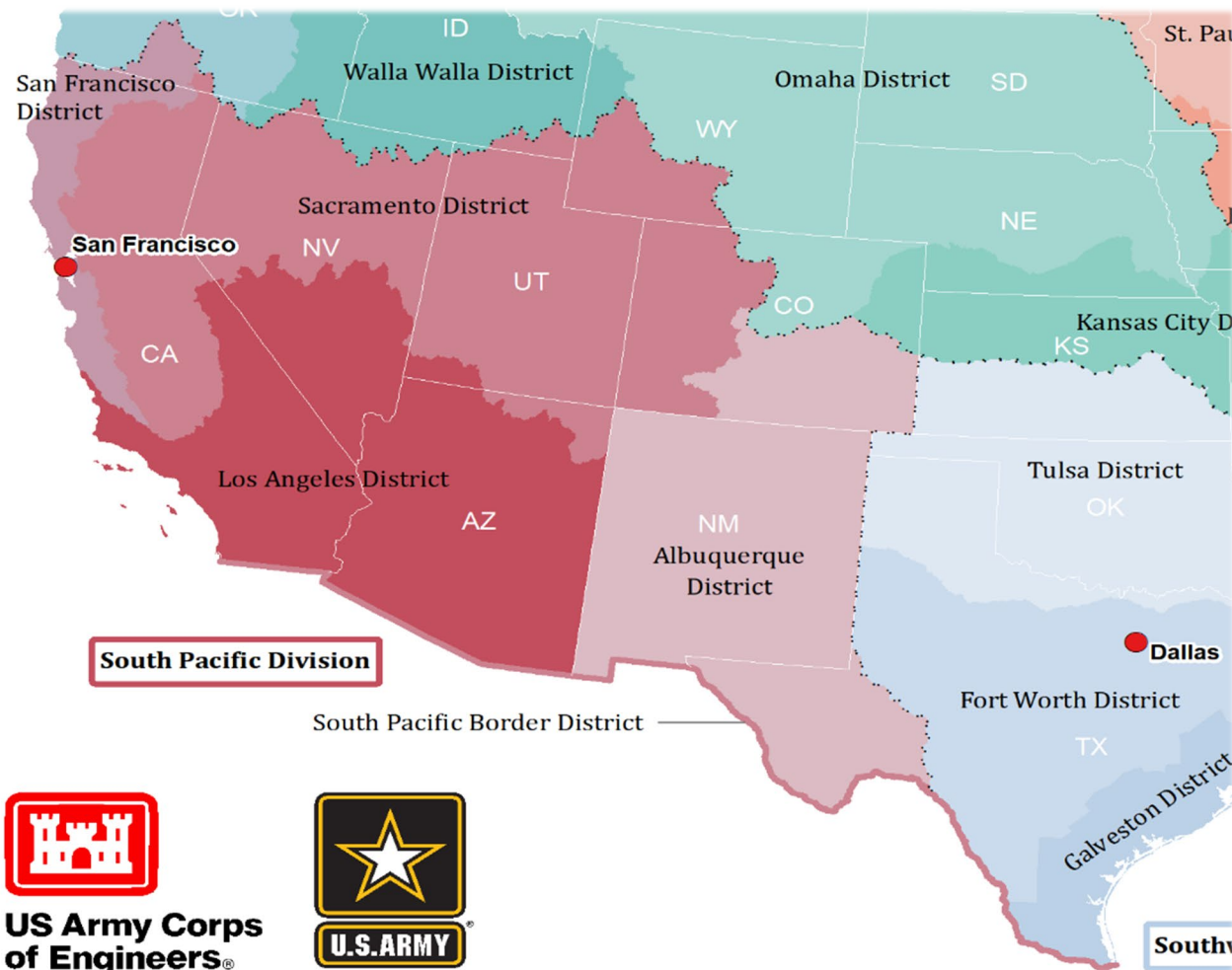
SOUTH PACIFIC DIVISION

2



- ❑ **4 Districts, 10 States**
- ❑ 2,800 Civilians and Soldiers
- ❑ 13 Army/13 USAF installations
- ❑ 46 Corps dams and reservoirs
- ❑ 2,286 miles of Federal levees
- ❑ 194 recreation areas; 19.6m visitors/year

- ❑ 39 Navigation Projects
- ❑ 429 miles of Navigation Channels
- ❑ 35 miles of Coastal Navigation Structures
- ❑ 3 Large Debris Control Dams
- ❑ 5 National Strategic Ports



Civil Works Boundaries



U.S. ARMY

SOUTH PACIFIC DIVISION (SPD) LEADERSHIP

3



COL Chad Caldwell
Acting Commander



LTC Kevin Arnett, PhD, PE
Deputy Commander



Mr. John Moreno, PE, SES
Director of Programs



Mr. Brian Kamisato,
Acting Regional Business Director

DISTRICT COMMANDERS



LTC Jerre Hansbrough
Albuquerque District



COL Chad Caldwell
Sacramento District



COL Andrew Baker
Los Angeles District



LTC Timothy Shebesta
San Francisco District

SPD Strategic Vision Statement

Delivering bold solutions to serve and strengthen all communities.

***John Martin Dam
Albuquerque District***





U.S. ARMY

SPD OPERATIONS & REGULATORY TEAM

5



Tori White
Chief

Operations



Heather Schlosser
Coastal, Navigation, &
Engineering with Nature



Tom Ehrke
Recreation, Environmental
Stewardship, &
& Sustainability



Brian Dela Barre
Flood Risk Management,
Water Supply,
& Section 408



Chris Schooley
Asset Manager

Regulatory



Scott Kelly
Regulatory (Acting)



Travis Morse
Appeals Review Officer



Shannon Johnson
*Technical Regional
Execution Center (TREC)*



Kasey Sirkin
TREC Team Leader

Blue denotes temporary



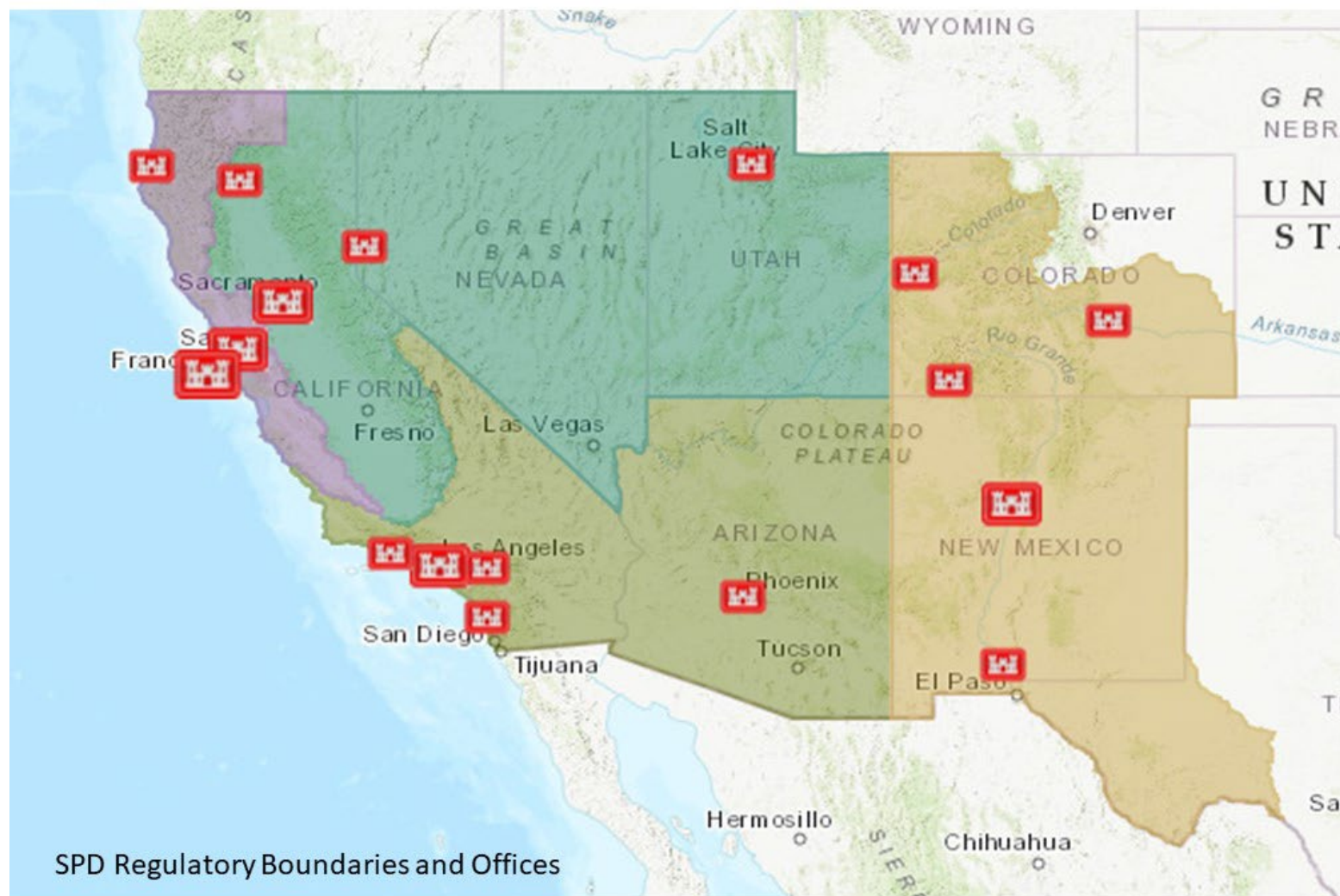
U.S. ARMY

SPD REGULATORY BOUNDARIES

6



- ❑ **4 Districts, 7 States**
- ❑ 17 offices; 155 professionals
- ❑ 7,264 regulatory final actions in FY22 (includes 301 individual permits)
- ❑ Over 350 general permits verified for emergency actions in CA following winter storms
- ❑ 36 WRDA 214 Agreements
- ❑ Great ecological diversity and varied landscapes
- ❑ +300 threatened/endangered species
- ❑ 182 Federally recognized Tribes & greatest extent of tribal lands





U.S. ARMY

PERMITTING REFORM

7



2019 Inspector General Report

- Change budget allocation process
- Regulatory a Direct Report
- Regulatory Development Program

2022 Permitting Action Plan

- Required by CEQ and OMB
- Must be more Transparent
- More Public Engagement
- Environmental Justice needs to be addressed

2015 Federal Permitting Improvement Steering Committee

- Develop permitting timetables
- More visibility from the public
- Communicate strategy
- Dashboard for public visibility
- Upward reporting to Whitehouse

Our Goal

Improve public service through transformational change that will enable USACE Regulatory Program to continue to effectively deliver decisions that balance natural resource protection with the need for progress and economic growth.

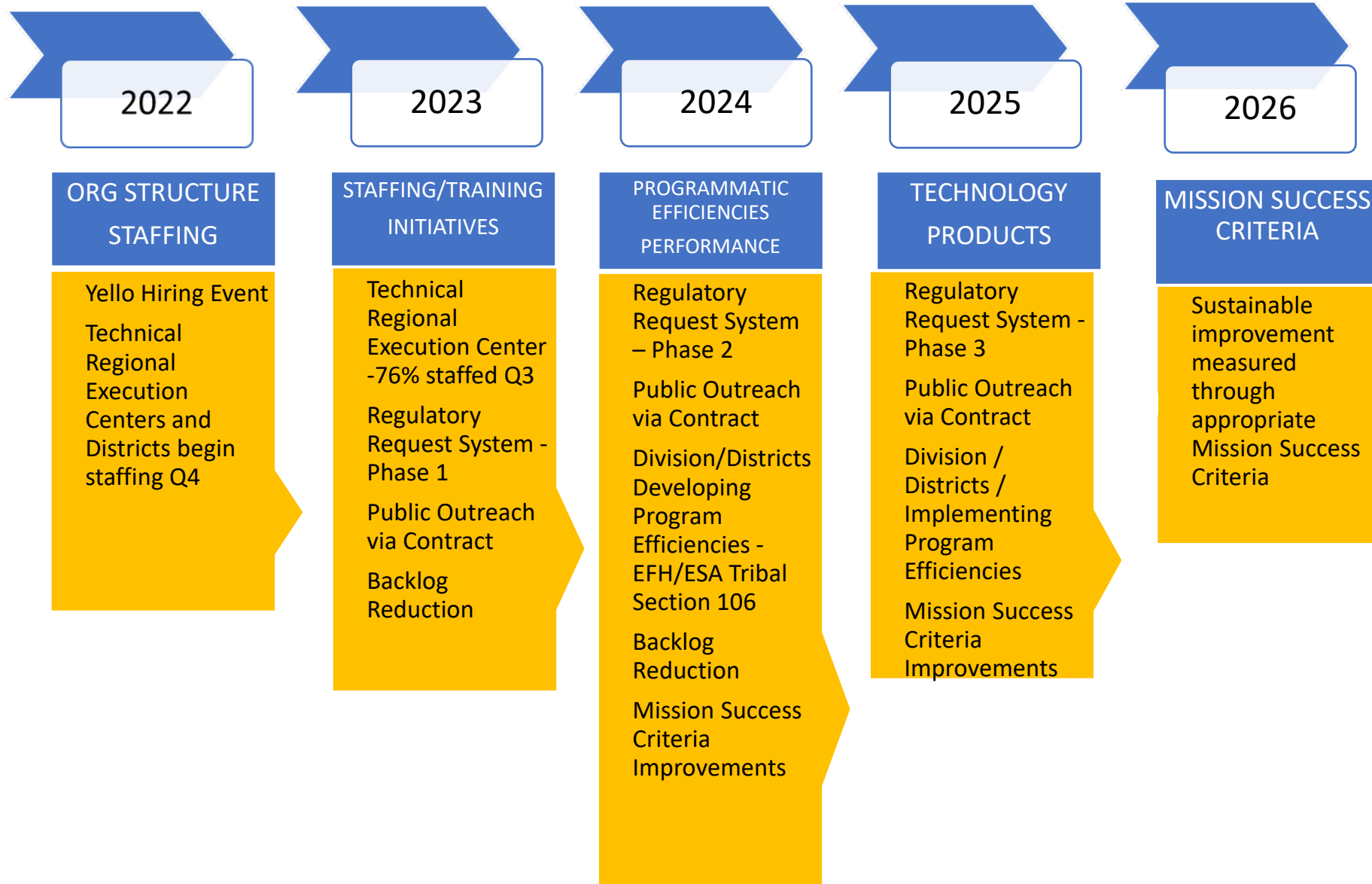




U.S. ARMY

BIL EXECUTION PLAN FOR REGULATORY

8

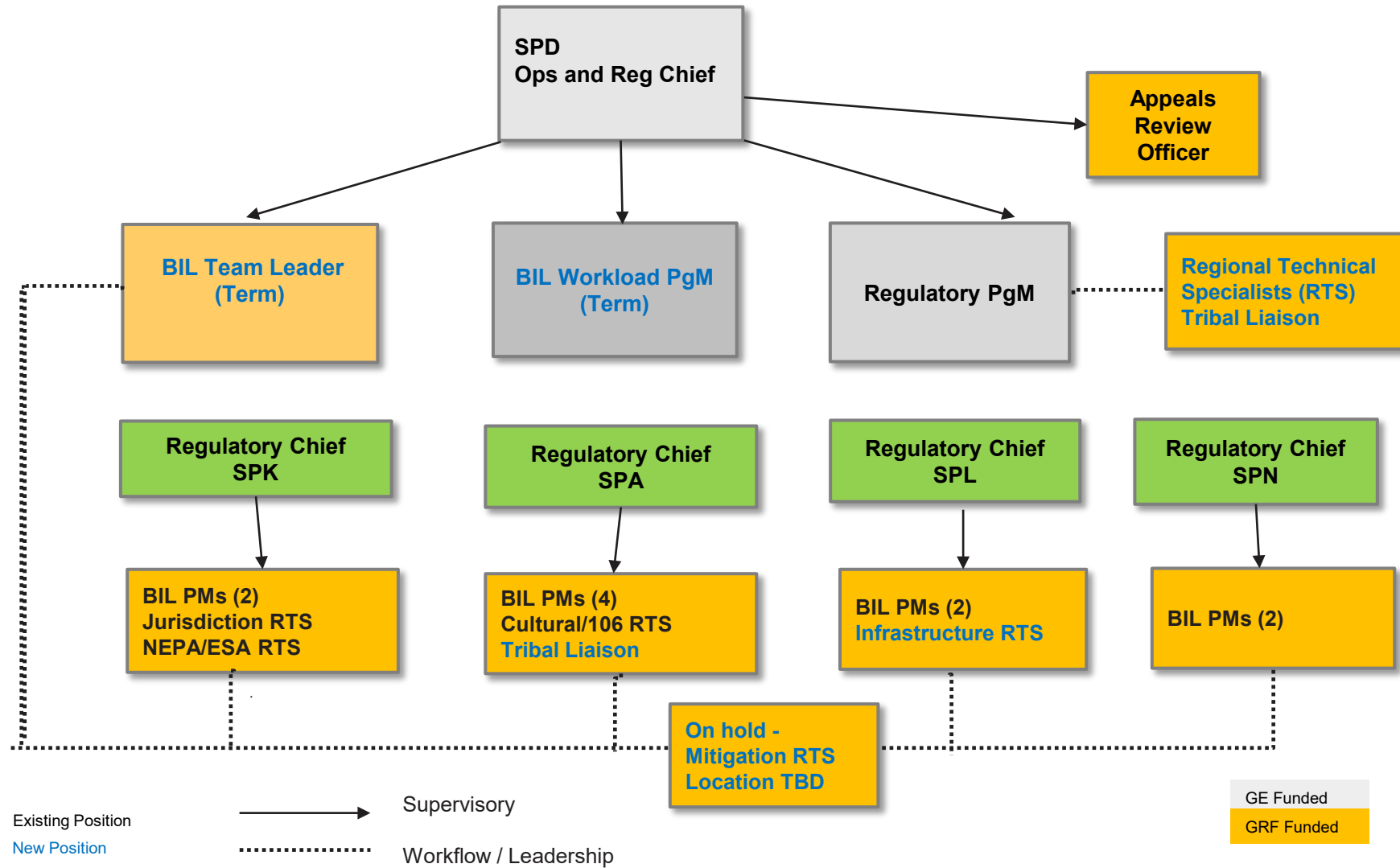




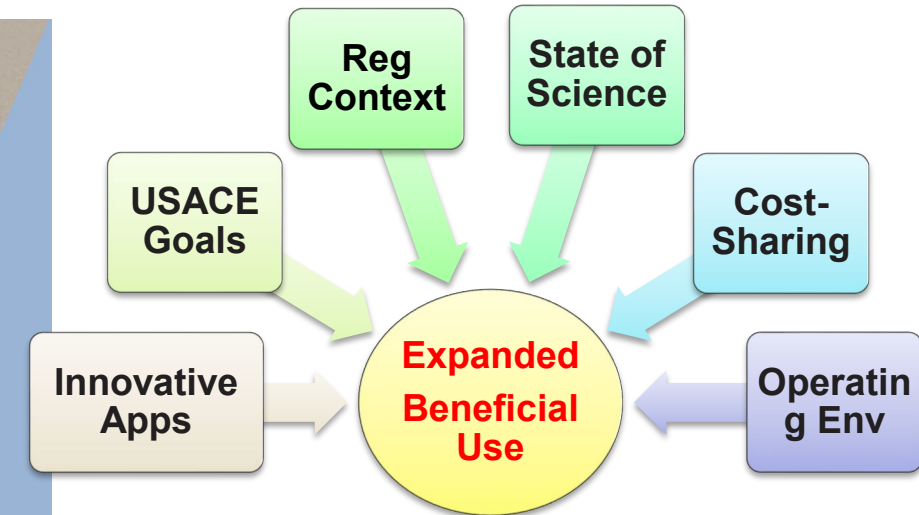
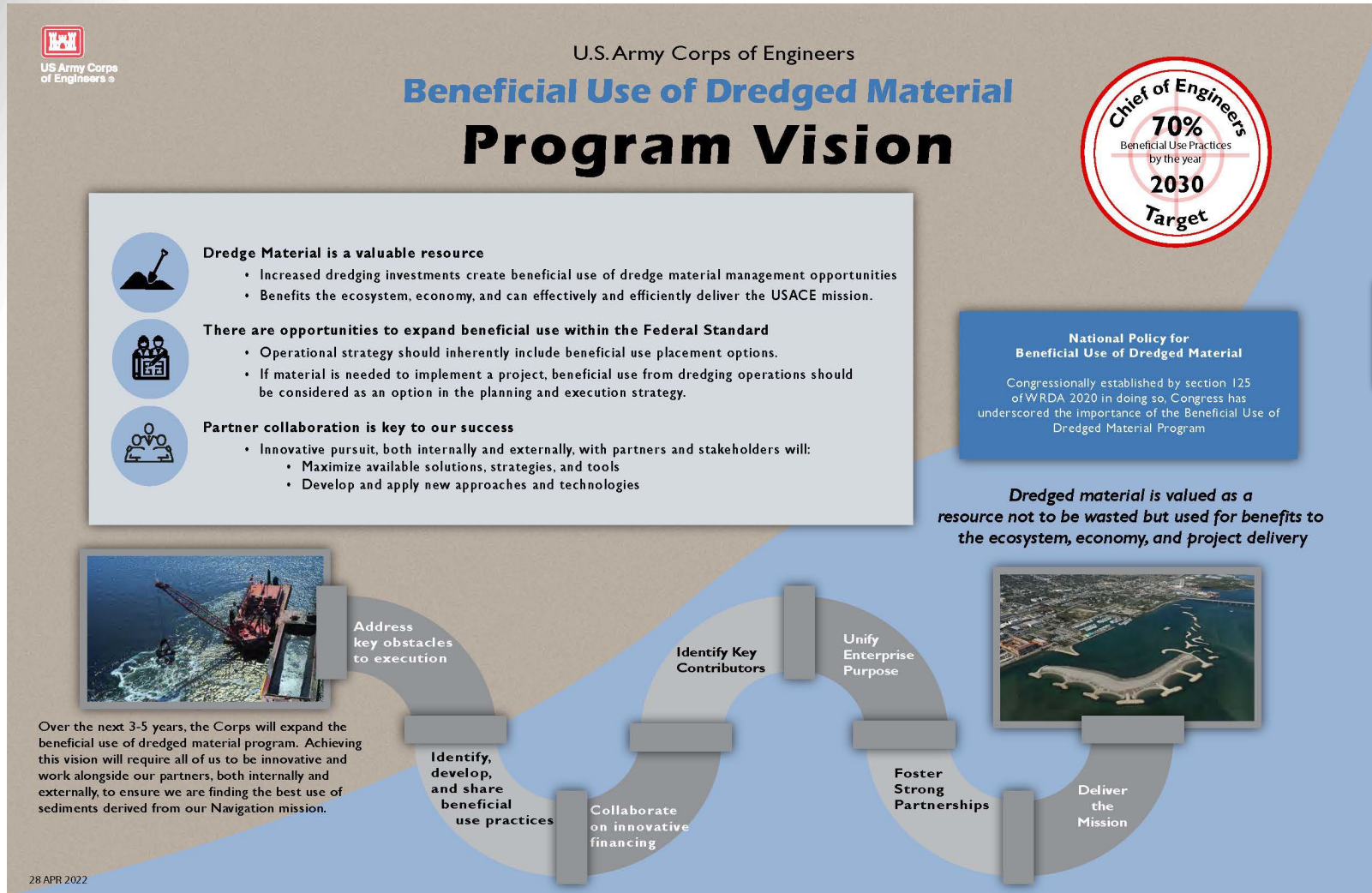
U.S. ARMY



TECHNICAL REGIONAL EXECUTION CENTER



“Regulators without Borders”



- ✓ WRDA 2020 Section 125
- ✓ DIS use to track BU
- ✓ Section 1122 Program
- ✓ Expansion of Nearshore Disposal Sites
- ✓ Comprehensive Benefits
- ✓ Engineering with Nature



U.S. ARMY

SPD NAVIGATION PROJECTS – SAN FRANCISCO DISTRICT



11



Dredge Events
148

Total Volume
27.9M cy

Beneficial Use
21%
5.79M cy of 27.9M cy

30
BU Events

Disposal
79%
22.11M cy of 27.9M cy

118
Disposal Events

HOW DO WE INCREASE BUDM in SPN?

- ❖ **GOAL NOT YET MET**
- ❖ **Dredge about 3-5 MCY annually**
- ❖ **Lots of Regulatory Restrictions within SF Bay tends to result in Ocean Placement as the Federal Standard**

Current and Upcoming Efforts

- ❖ **Oakland Harbor (600-700 KCY) – FY22/23 O&M dredging beneficially placing sediment both in-bay and direct upland placement.**
- ❖ **1122 Pilot Project – Potential to beneficially place about 23 MCY over about 10 years**
- ❖ **5-year Regional Dredged Material Management Plans AND SF Bay Regional Dredged Material Management Plan**
- ❖ **Looking at nearshore placement site for Humboldt (over 1MCY)**
- ❖ **Partners that are invested in BU, including CA Coastal Conservancy**



U.S. ARMY

SPD NAVIGATION PROJECTS – LOS ANGELES DISTRICT

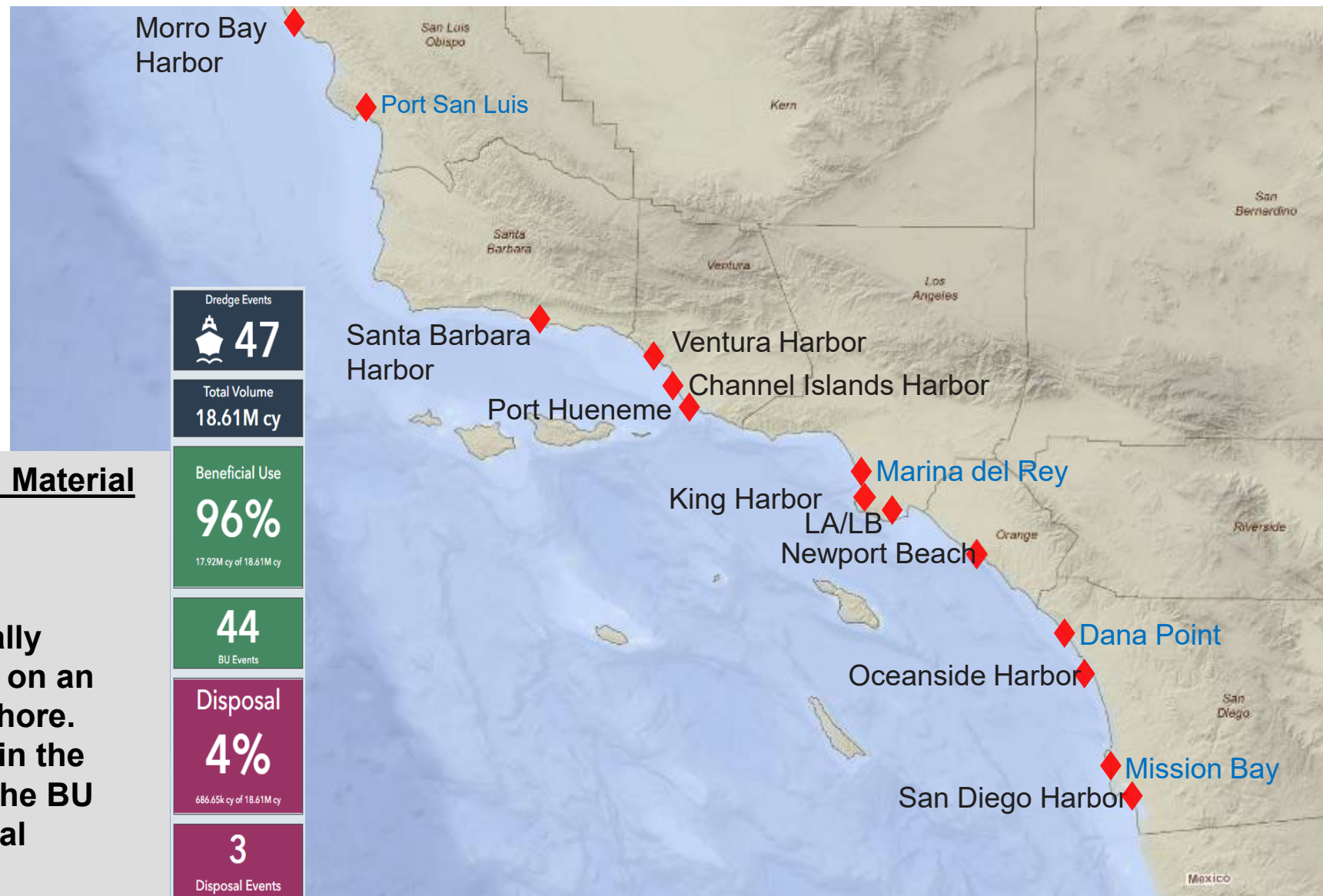
12



- ❑ 12 Projects with Federal Navigation Channels
- ❑ 2 Projects with Navigation Structures only

How Do Beneficially Use Dredged Material in SPL?

- ❖ **GOAL MET**
- ❖ **Dredge about 1-1.5 MCY annually**
- ❖ **Placement locations are either on an adjacent beach or in the nearshore.**
- ❖ **Projects are generally located in the open ocean environment and the BU disposal options are the Federal Standard.**

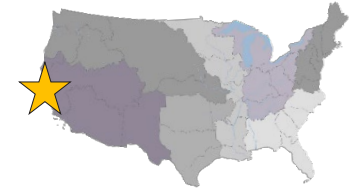




U.S. ARMY

SECTION 1122 IN SPN

13

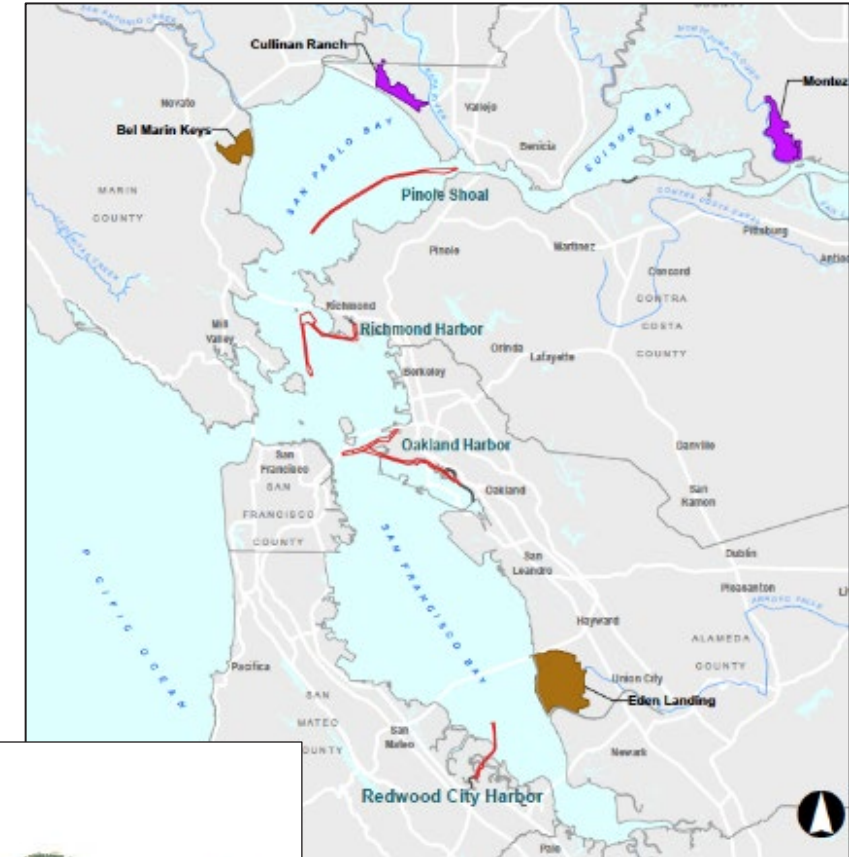


Location: San Francisco Bay, Pacific Coast

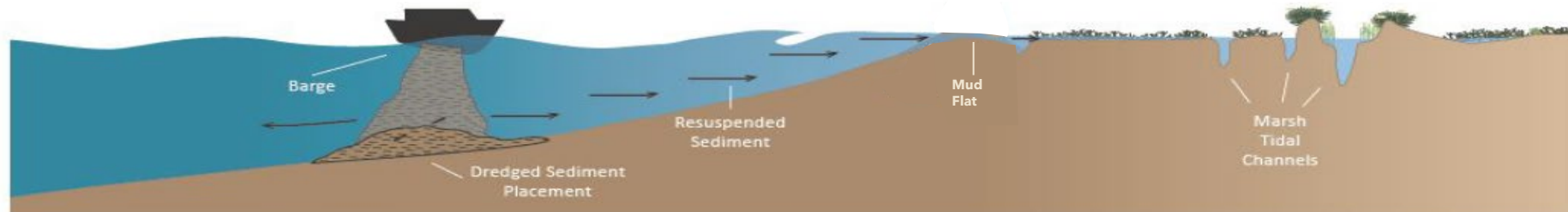
Estimated 1122 Project Cost: TBD (\$64.05M)

Success & Lessons Learned: The project offers a real-world implementation of innovative dredge material beneficial use, including the operational challenges for contributing federal navigation projects, efficiencies and potential economies of scale to be gained, and the evaluation of sediment transport pathways and resultant benefits to wetlands fringing San Francisco Bay.

Status: Finalizing plans and specs for nearshore and direct placement, expected construction in FY23.



Shallow-Water Placement



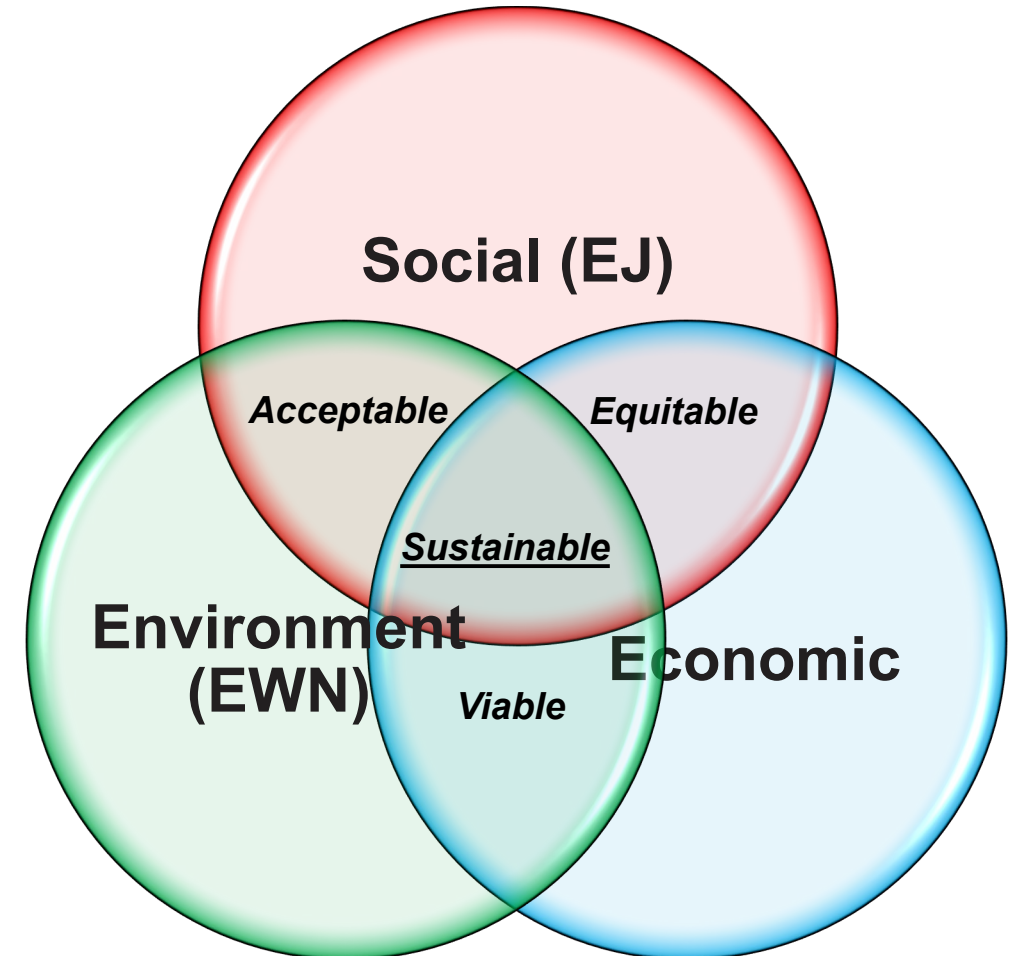


Analysis – Why EWN and EJ together?

Strengthen water resources infrastructure to achieve climate resilience for ALL communities and leverage collaborative capacity to achieve complex goal.

In order to build sustainable projects that are **acceptable**, **equitable** and **viable**, we must evaluate the social and environmental benefits equally with the economic benefits.

- EWN can provide additional benefits to and help reduce past unintended consequences.
- EJ has to be considered so EWN doesn't create **unintended consequences** such as gentrification.
- Engineering with nature can help improve environmental conditions for everyone, by tying engineering with nature to environmental justice, we can help **remove barriers in addressing issues**.





QUESTIONS?





Back up slides



U.S. ARMY

SCC 1122 PROPOSAL

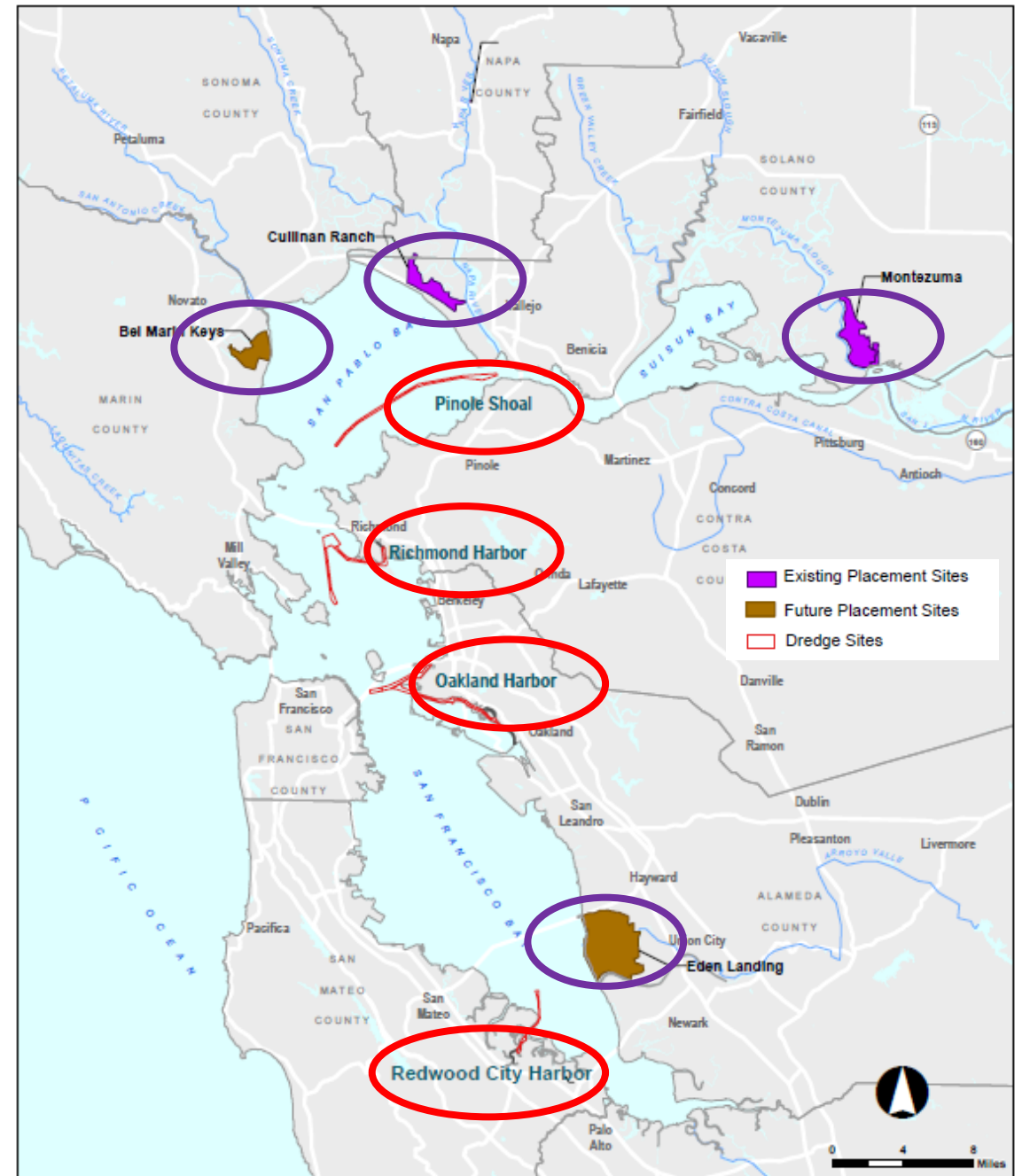
Federal Navigation Projects (SOURCE):

- Oakland Harbor
- Richmond Harbor (Inner; Outer = Hopper)
- Pinole Shoal (Hopper)
- Redwood City

Beneficial Use Site:

- Cullinan Ranch
- Montezuma
- Bel Marin Keys Unit V
- Eden Landing

	Est. Federal 1122 Costs	Est. Volume	Notes
Strategic Placement	\$3.25M	TBD	Finalizing Design
Cullinan Ranch Direct Placement	\$6.5M	2 MCY	Available now
Montezuma Direct Placement	\$24.9M	4.5 MCY	Available now
Bel Marin Keys	\$29.4M	9.1 MCY	Available ~FY24+
Eden Landing	TBD	7.2 MCY	Available ~FY26+
Total over 10 years	\$64.05M	22.8 MCY	



SAN FRANCISCO BAY WIIN PILOT PROJECT



U.S. ARMY

WRDA 2020 – SECTION 125 (SECTION C)

18



Overview: Section 125c of WRDA 2020 directs USACE to develop 5-yr regional dredged material management plans (RDMMP) at full federal expense.

APPLICATION:

5-YR RDMMP

- Updated annually
- Districts limited to \$20K for development
- FY24 – first year funds will be available
- Public Scoping process to solicit BU opportunities.
- Dredged material is considered a resource and RSM and EWN principles shall be used whenever possible.
- New Placement sites will be considered and approved in a decision document called a Beneficial Use Decision Document Integration (BUDDI).
- BUDDIs can be an addendum to a 20-yr DMMP.

Beneficial Use Opportunities will be solicited from the sponsors, stakeholders and the public.



WRDA 2020 – SECTION 125 (SECTION A)



Overview Section 125a of WRDA 2020 gives an avenue for USACE to cost-share in the incremental cost of beneficial use placement of dredged material during O&M of a Federal navigation project.

Section 125(a)(2)(C) of the Water Resources Development Act (WRDA) of 2020 amends Section 204(d) of WRDA 1992 (33 U.S.C. 2326(d)) to authorize the Secretary to *use funds appropriated for construction or operation and maintenance of a project involving the disposal of dredged material when selecting a disposal method that is not the least cost option based on a determination that the incremental costs of the disposal method are reasonable in relation to the environmental benefits or the hurricane and storm or flood risk reduction benefits.*

APPLICATION: Beneficial Use (BU) Placement of material dredged during Operation and Maintenance (O&M) of a Federal Navigation Project under Section 204(d).



U.S. ARMY



SOUTH PACIFIC DIVISION REGULATORY

STAFFING Q4 July 1	
FY 22	145
FY 23	155

BIL ALLOCATION	
DIVISION	\$1,741,781
TREC	\$2,647,686
INITIATIVES	\$ 237,709
TOTAL	\$4,627,176

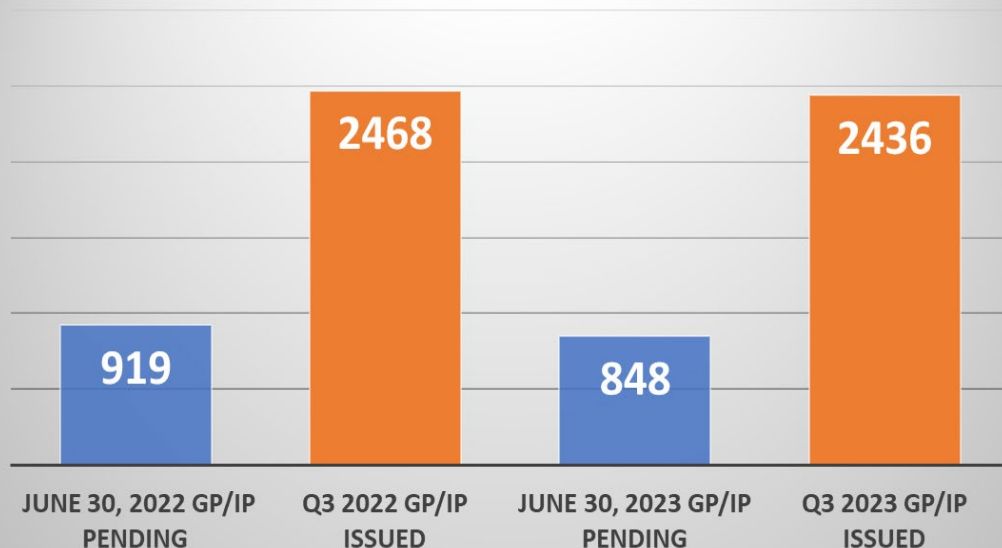
BIL FUNDS TO DATE	
OBLIGATED	\$2,703,863
REMAINING	\$1,923,313

What is the Division doing to implement solutions to better serve the public? ORM audit to identify internal delays and ways to improve; drafting EJ framework for PMs; working with TNTCX to develop a regional tribal rights guidance and practices manual, a tribal treaty GIS viewer, and a tribal training strategy; targeting relationships with SHPOs in the AOR; planning roadshows using HQ outreach contract; and working on RGP for wildfire activities.

Explain when and how backlog will turn the corner. Unprecedented winter storms in CA caused a shift in workload priorities for FY23 to include over 350 emergency permitting actions. One project in house >3 years. Targeting >2-year actions for completion in FY 24 which may lower success criteria for next FY.

Project when backlog will meet the threshold and MSC will be met. As of 7/28/23 - Green at 58% Outreach, Green at 72% for IPs, and Amber at 81% for GPs. Projecting 1-3% additional improvement for GP/IP by Q3 FY24. It is unlikely that ILF/Bank decisions will ever be green based on complexity and external agency requirements.

SPD - Comparison



SPD	Q3 FY 2022				Q3 FY 2023			
Mission Success Criteria	Num	Den	%	Status	Num	Den	%	Status
OUTREACH	82	121	68%	Green	74	134	55%	Green
Target 50%								
GP DECISIONS 60 DAYS OR LESS	1864	2330	80%	Amber	1830	2300	80%	Amber
Target 85%								
IP DECISIONS 120 DAYS OR LESS	95	138	69%	Amber	91	137	66%	Amber
Target 70%								
BANK/ILF INSTRUMENT DECISIONS								
WITHIN 550 DAYS	0	1	0%	Red	0	1	0%	Red
Target 70%								