



**AMERICAN
GREAT LAKES PORTS
ASSOCIATION**

PUBLIC POLICY ADVOCACY FOR GREAT LAKES PORTS

- Founded in 1977
- Washington based
- 15 commercial port agencies:

Duluth, Superior, Green Bay,
Milwaukee, Chicago, Burns Harbor,
Muskegon, Detroit, Monroe, Toledo,
Lorain, Cleveland, Erie, Ogdensburg,
Oswego
- Visit Us: www.greatlakesports.org



**AMERICAN
GREAT LAKES PORTS
ASSOCIATION**

SHIPPING IS A FOUNDATION OF THE REGIONAL ECONOMY

- Bi-national partnership
- 237,000 jobs related to maritime transport
- Supports \$35 billion in economic activity
- Approximately 140 M tons / year
- Bulk / breakbulk cargo
- Serving steel-making, agriculture, energy, mining industries

location of major ports



**AMERICAN
GREAT LAKES PORTS
ASSOCIATION**

CURRENT ISSUES

- Harbor Maintenance Funding
- Soo Lock Construction
- Icebreaking
- Coastal Resiliency Planning
- Ballast Water Management
- St. Lawrence River Flows
- Port Infrastructure Grant Funding
- Marine Pilotage Rates
- CBP Issues
- Marine Sanctuaries



AMERICAN
GREAT LAKES PORTS
ASSOCIATION

HARBOR MAINTENANCE FUNDING

U.S. Army Corps of Engineers Great Lakes Backlog

\$375 million	Dredging Backlog
\$320 million	Repair Breakwaters
\$225 million	Repair Soo Locks

\$920 million	Total Current Backlog
---------------	-----------------------



**AMERICAN
GREAT LAKES PORTS
ASSOCIATION**

HARBOR MAINTENANCE FUNDING

YEAR	NATION- WIDE	GREAT LAKES	%
FY21	\$1.68 B	\$210.8 M	12.5%
FY20	\$1.65 B	\$161.3 M	9.8 %
FY19	\$1.54 B	\$191.9 M	12.4 %
FY18	\$1.37 B	\$161.4 M	11.7 %
FY17	\$1.276 B	\$154.5 M	11.8%
FY16	\$1.263 B	\$142.8 M	11.3 %
FY15	\$1.112 B	\$118.8 M	10.7 %
FY14	\$1.076 B	\$118.0 M	11.0 %
FY13	\$882 M	\$87.3 M	9.5 %



**AMERICAN
GREAT LAKES PORTS
ASSOCIATION**

NEW SOO LOCK CONSTRUCTION

- Soo Locks support 87,000 U.S. jobs
- Authorized by Congress in 1986
- First new system lock since 1968
- 100% federal expense
- \$1.38 billion total cost
- \$411 million funded to date
- \$480 million funded in FY22



AMERICAN
GREAT LAKES PORTS
ASSOCIATION

ICEBREAKING

- Coast Guard mission loosely defined
- Great Lakes Winter Commerce Act will codify the icebreaking mission and set performance standards
- Atrophy in USCG icebreaking fleet
 - 1979 – 14 vessels
 - 2019 – 9 vessels
- New heavy icebreaker authorized by Congress in 2015 = \$350 million
- FY22 request = \$40 million
- Reconciliation Bill = \$350 million



**AMERICAN
GREAT LAKES PORTS
ASSOCIATION**

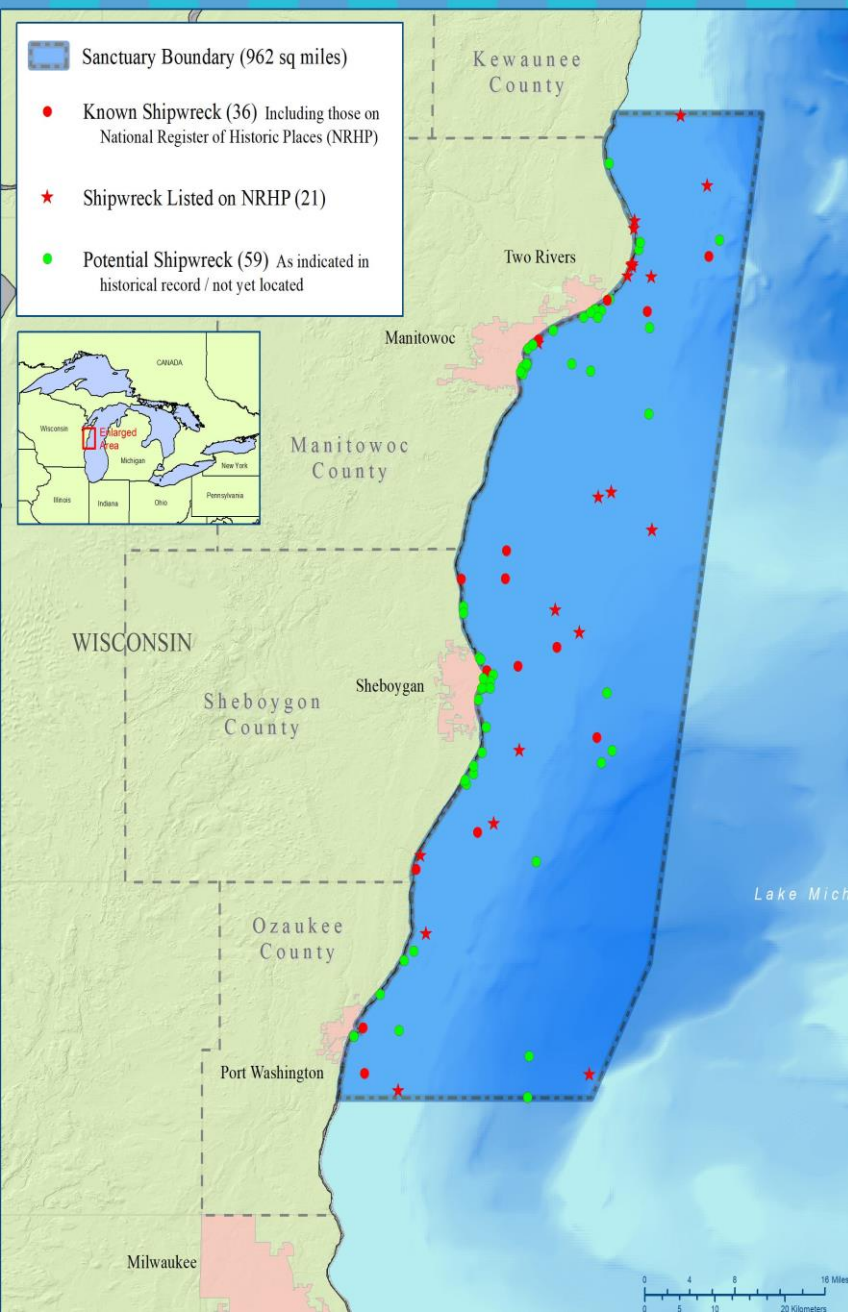
PORT INFRASTRUCTURE DEVELOPMENT GRANTS

- \$293 million for FY2019
- \$225 million for FY2020
- \$230 million for FY2021
- MARAD - 80/20 cost sharing
- Great Lakes Grants = \$76 million
 - Milwaukee, Duluth, Cleveland, Toledo, Indiana, Conneaut
- FY22 Request = \$500 million
- FY22 Budget = \$230 million
- Infrastructure Bill = \$2.25 billion
- Reconciliation Bill = \$2.5 billion



MARINE SANCTUARY PROLIFERATION

- Thunder Bay NMS (2014)
- Wisconsin-Lake Michigan NMS (2021)
- Lake Ontario NMS
- Lake Erie Quadrangle NMS
- Erie-Niagara NMS
- Lake Superior NMS
- Keweenaw NMS
- Chequamegon NMS





**AMERICAN
GREAT LAKES PORTS
ASSOCIATION**

GREAT LAKES COASTAL RESILIENCY STUDY

- Lake levels highest in recorded history
- Ports of Milwaukee and Oswego damaged
- Study authorized by Congress in 2018 & 2020
- Similar to North Atlantic Coast Comprehensive Study
- Supported by all Great Lakes states
- Cost = \$11 million



**AMERICAN
GREAT LAKES PORTS
ASSOCIATION**

THANK YOU!