



Santa Cruz Harbor

Gateway to the Monterey Bay National Marine Sanctuary

SANTA CRUZ HARBOR
NOW UNDER CONSTRUCTION
FOR SANTA CRUZ PORT DISTRICT

IN COOPERATION WITH:
U.S. ARMY CORPS OF ENGINEERS
STATE DIVISION OF SMALL CRAFT HARBORS
STATE DEPARTMENT OF PARKS & RECREATION

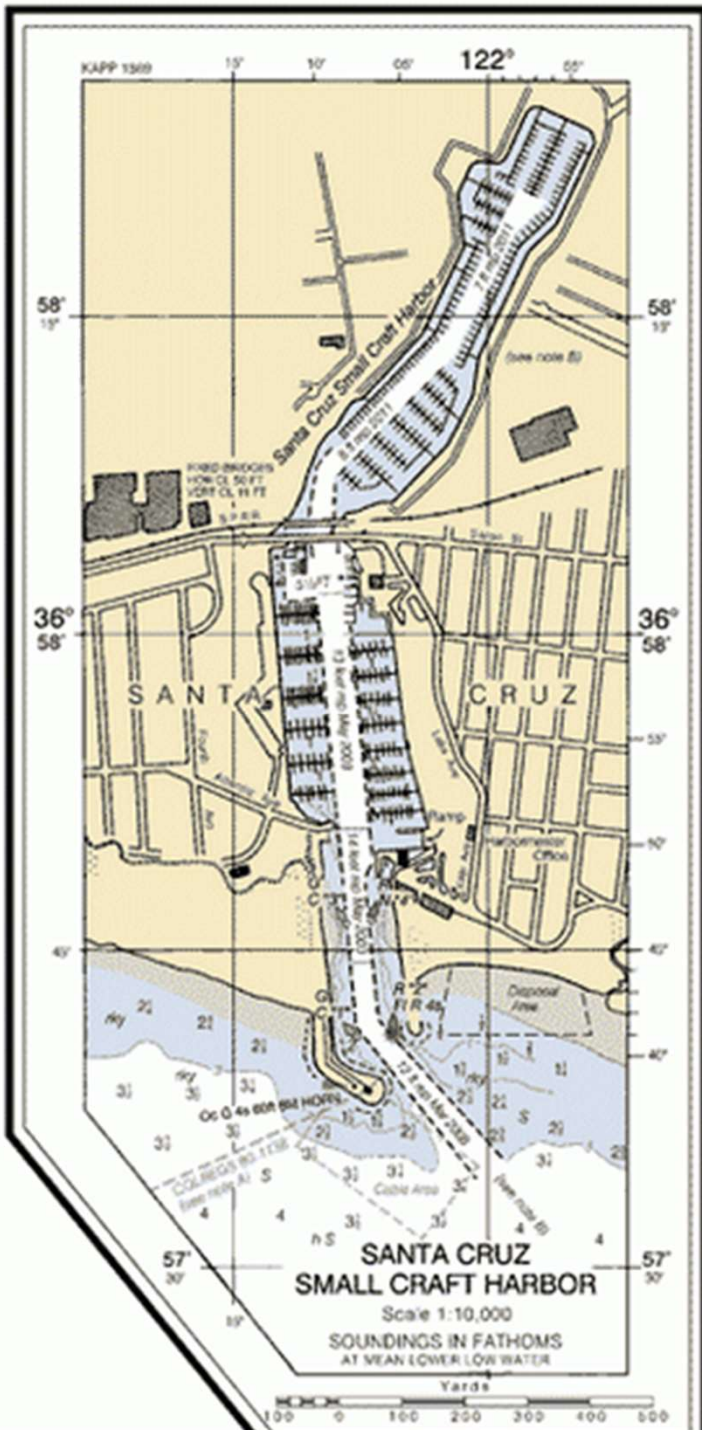
CONTRACTOR
GRANITE CONSTRUCTION CO. ENGINEERS
SANTA CRUZ WATSONVILLE **EARL & WRIGHT INC.**
49 FREMONT ST. SAN FRANCISCO



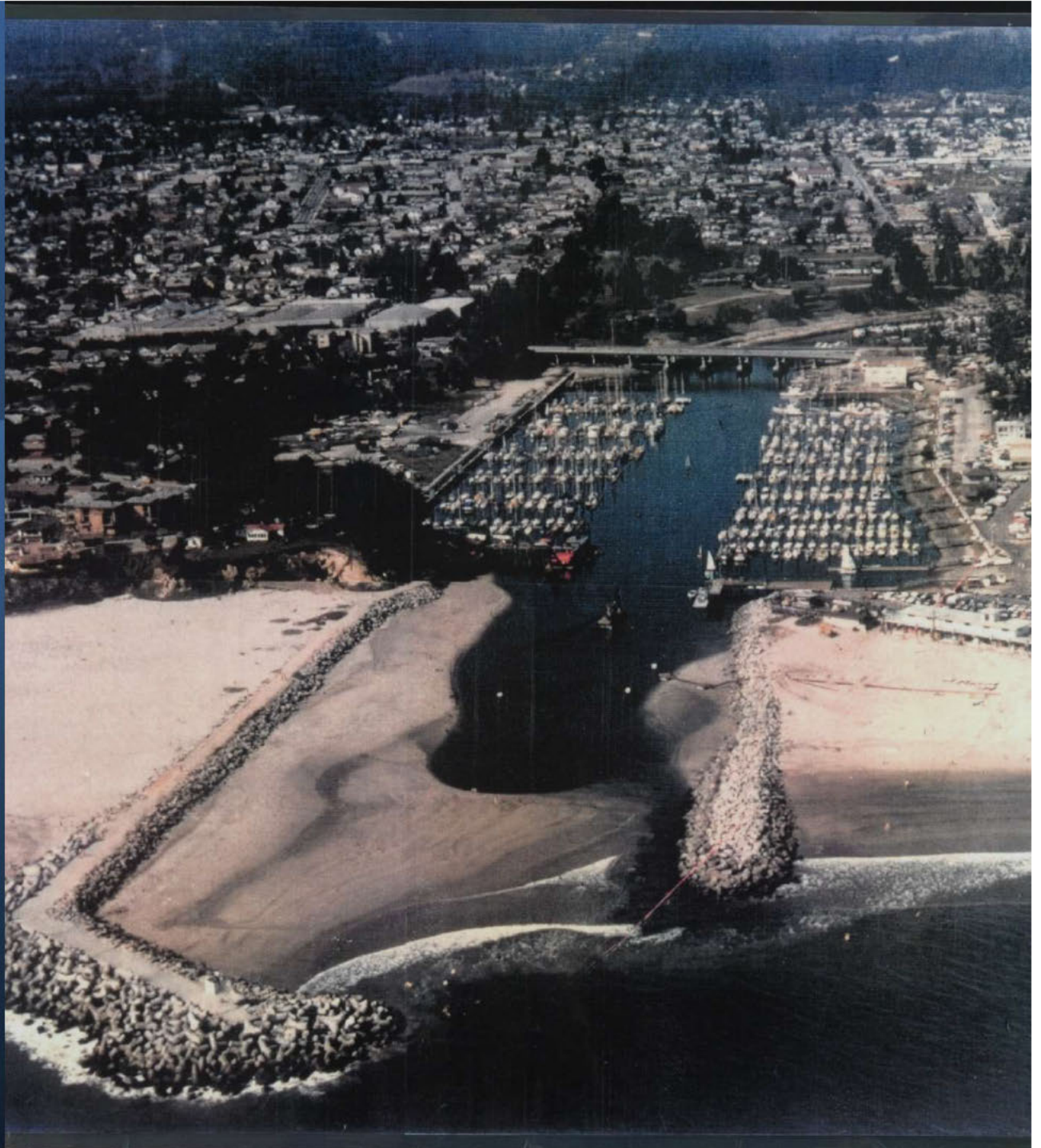


Profile

- Independent Special District
- Governed by 5-member Board of Port Commissioners
- Annual Budget: ~\$10M funded almost entirely from user fees
- 27 full-time employees + seasonal, part-time staff
- About 92 acres
- 1000 wet berths; 275 dry storage spaces
- Home to >30 locally owned businesses
- A state and regional asset



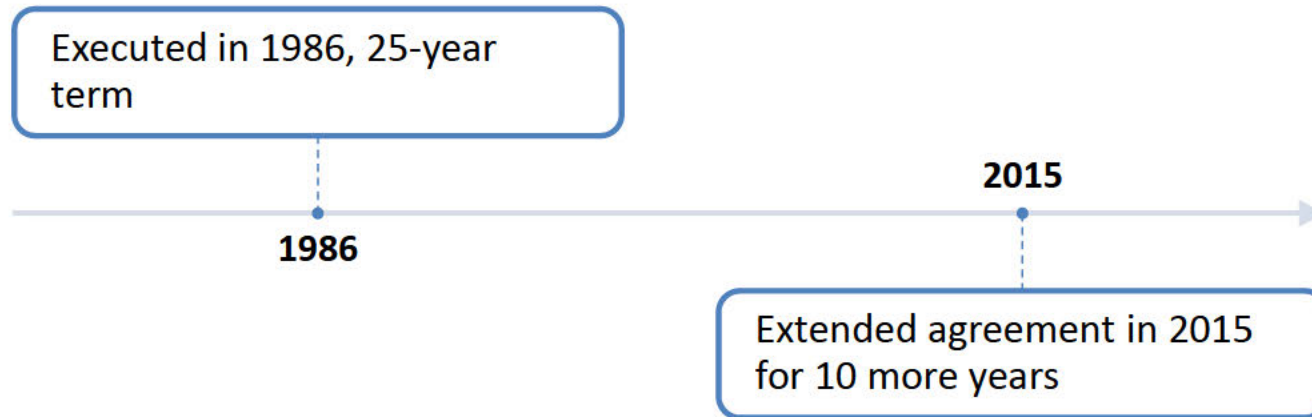
**Santa Cruz
Harbor
requires
annual
maintenance
dredging**





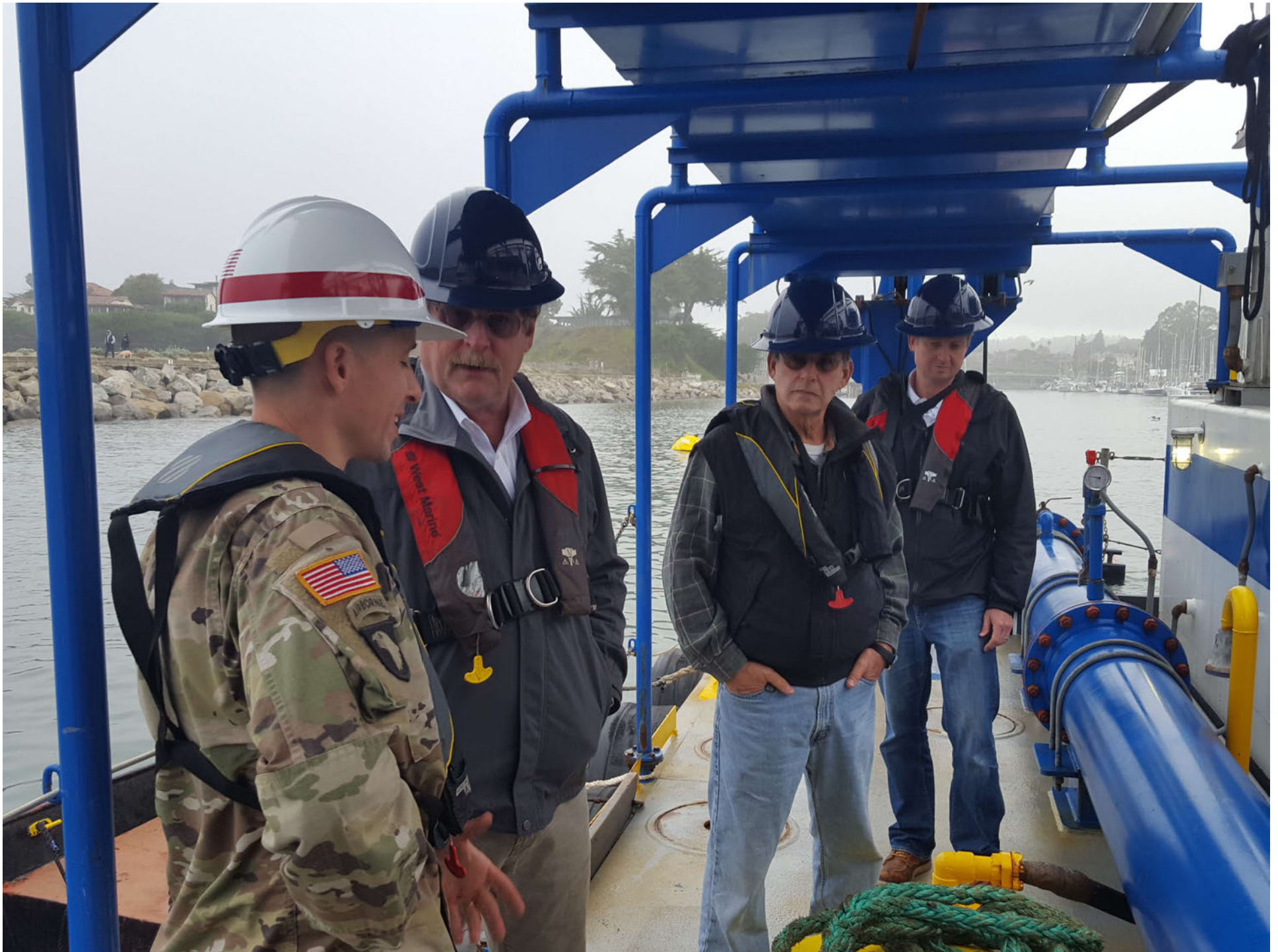


Cooperative Agreement between USACE and Port District




- Port District took over responsibility for dredging the federal navigation channel
- USACE now reimburses District 35% of actual average annual expenses
- Reimbursement increased in 2020 from \$385,000 to \$525,000









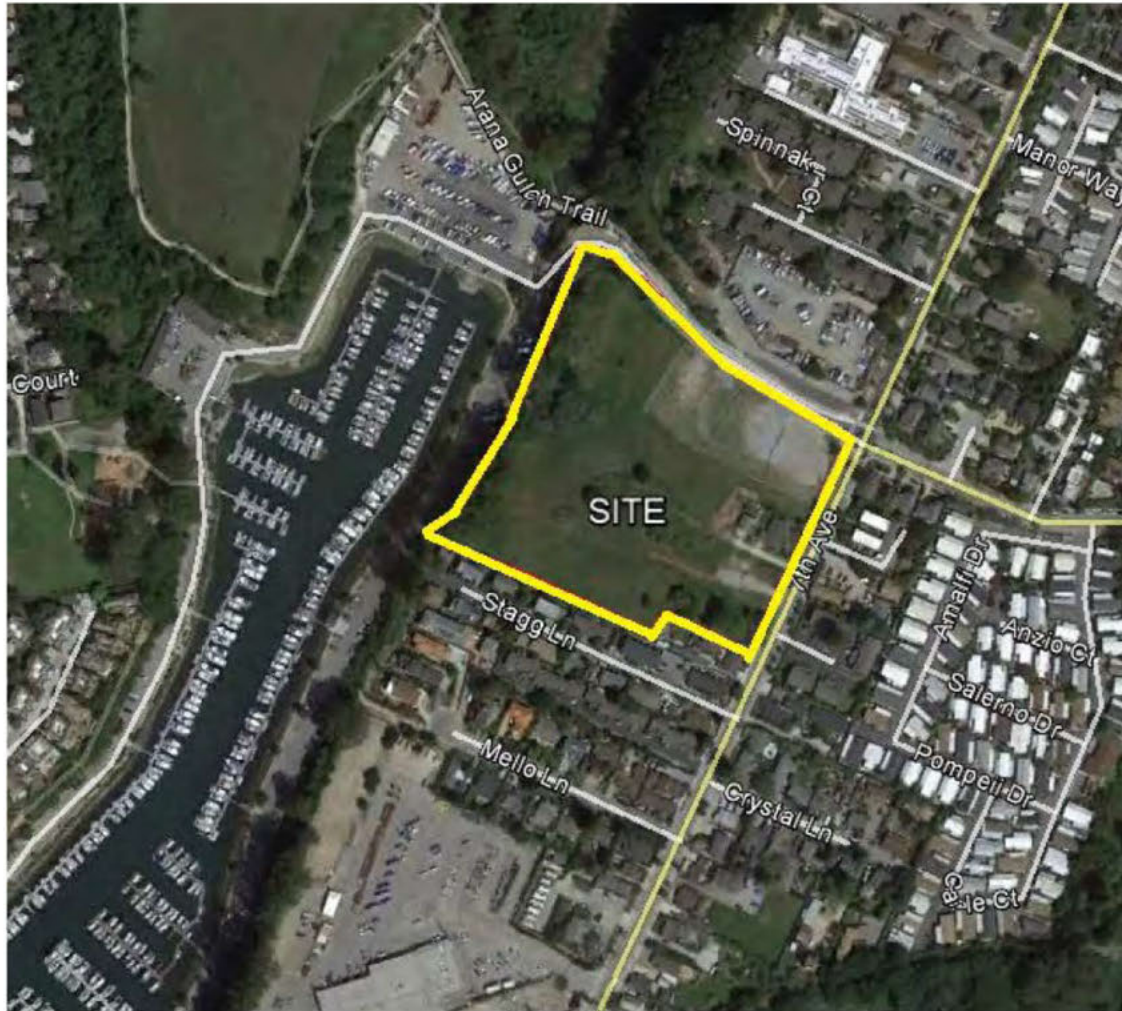


Covid-19 Impacts Since March

- Initial closure of launch ramp, restaurants, harbor office
- ~10% reduction in revenue (restaurants, parking, charter boat, and other fees)
- Increases in expenses
- Reduced capital investment
- Impacts on human resources

Uncertainty over commercial crab season due to risk of whale entanglements





Room for
growth?







Thank you!



Toby Goddard
scpd@santacruzharbor.com