

# LOS ANGELES DISTRICT

CMANC  
5 NOVEMBER 2020

COL Julie Balten



US Army Corps  
of Engineers®

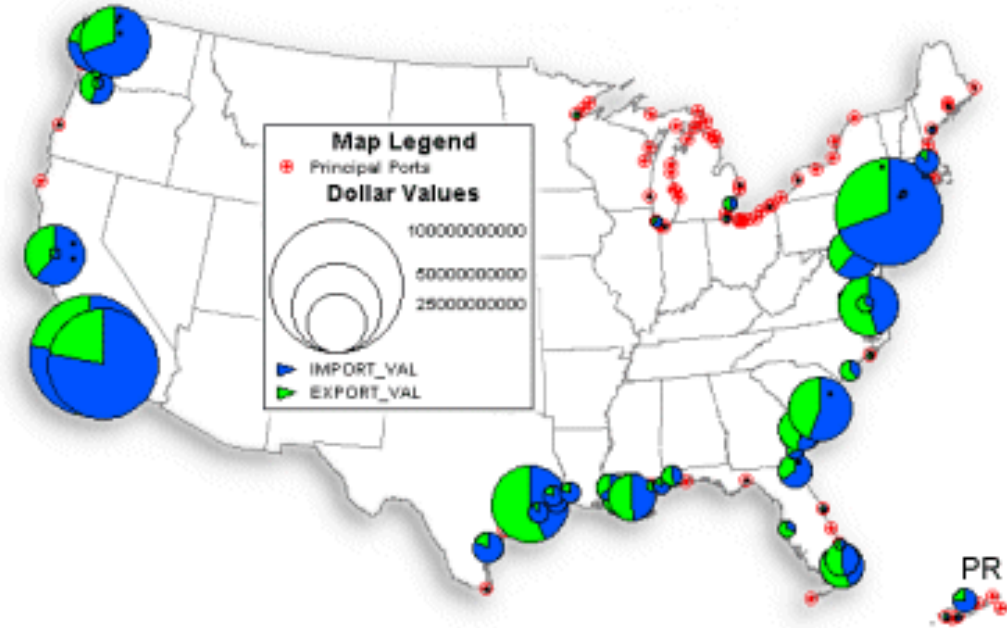


# USACE ECONOMIC SIGNIFICANCE



## Value of Imports and Exports

- ❖ 5 major commercial ports (>40 ft. depth)
- ❖ 7 minor commercial ports (20-40 ft. depth)
- ❖ 15 small craft harbors
- ❖ Regional investment is from \$80M to \$138M per year
- ❖ Dredging supports over \$400B in commerce annually.
- ❖ California ports are #1 in value shipped
- ❖ California ports are #3 in the US in tonnage

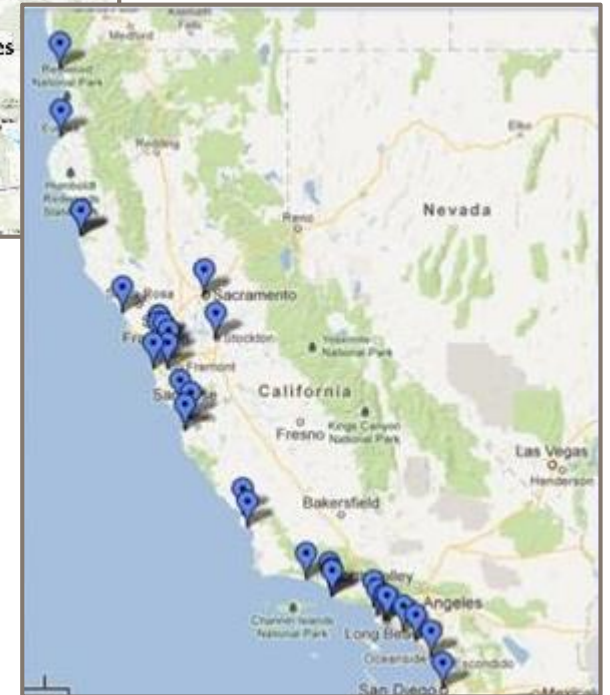




# SPD COASTAL NAVIGATION PROGRAM

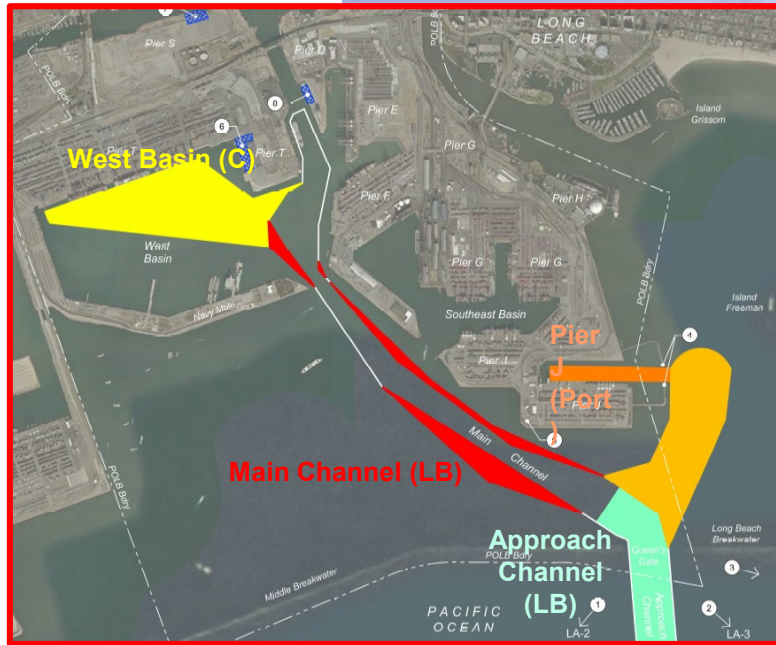


- ❖ **27 CA Ports and Harbor**
  - Including 4 Donor Ports (LA, LB, Port Hueneme, San Diego)
- ❖ **429 miles of Navigation Channels**
- ❖ **35 miles of Coastal Navigation Structures**
- ❖ **3 Large Debris Control Dams (2 are multi-purpose)**
- ❖ **Approximately 10 M cubic yards dredged annually**
- ❖ **Removing ~1200 tons of debris/year from SF Bay**





# LOS ANGELES DISTRICT NAVIGATION PROGRAM



- Estimated first cost \$151M
- Average Net Annual Benefits \$18M
- 7.4 million cubic yards material dredged
- **Benefit to Cost Ratio of 3.8**



# LOS ANGELES SUCCESS STORY



Port of Long Beach and Port of Los Angeles,  
Hurricane Marie Aug 27, 2014

\$5.0M emergency repair contract awarded Sep  
2014, Middle Breakwater and Long Beach  
Breakwater

\$16.0M repair contract awarded OCT 2015,  
Middle Breakwater with a modification of \$4M

\$2.6M repair contract awarded SEP 2016, San  
Pedro Breakwater

Completing this Year





# THANK YOU!!

