

# PUBLIC MEETING

## REGIONAL DREDGE MATERIAL MANAGEMENT PLAN (RDMMMP)

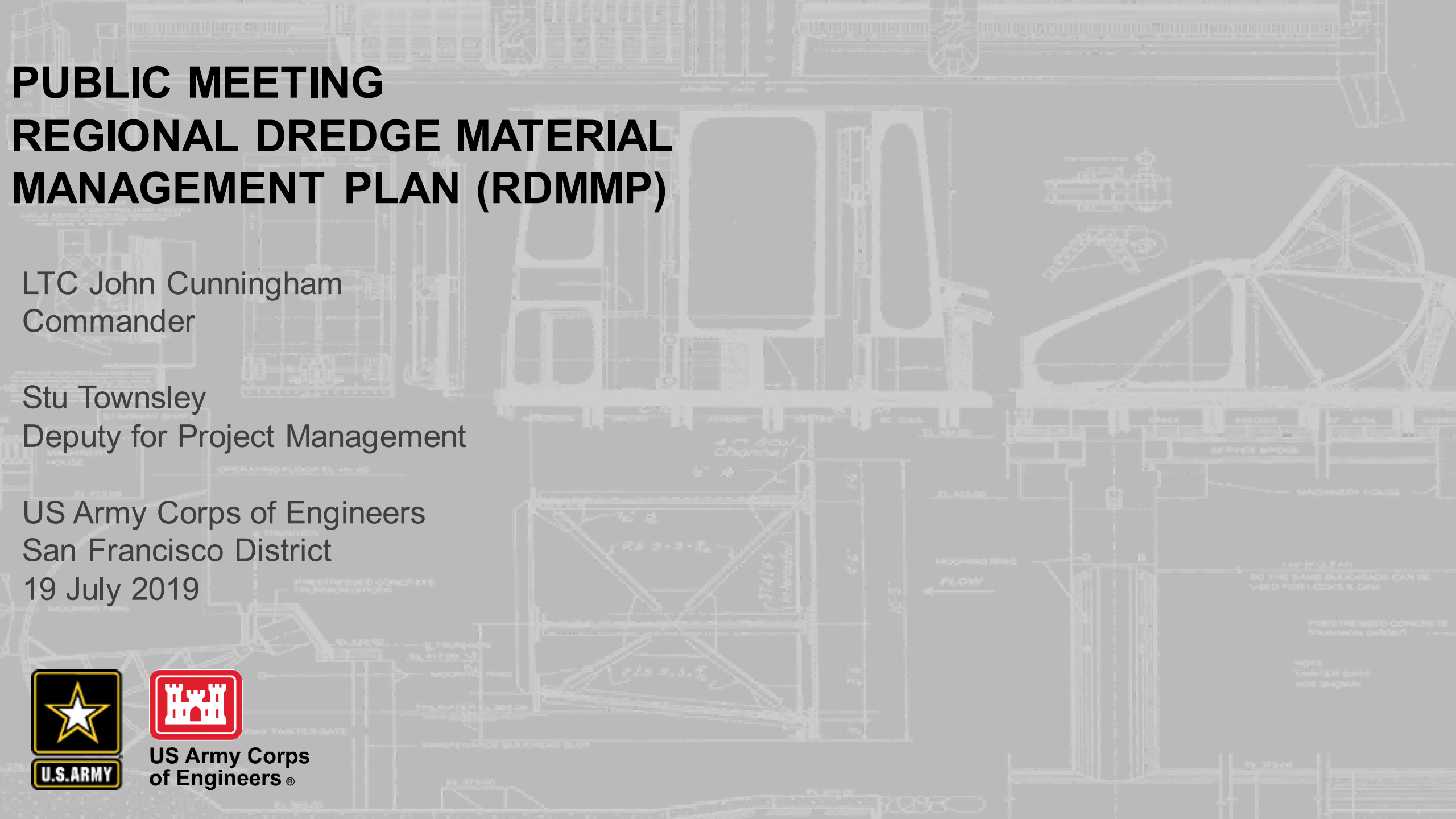
LTC John Cunningham  
Commander

Stu Townsley  
Deputy for Project Management

US Army Corps of Engineers  
San Francisco District  
19 July 2019



US Army Corps  
of Engineers®



# MISSIONS



- Navigation - dredging and debris removal along 22 Federal ship channels
- Flood Risk Reduction
- Environmental Restoration
- Outdoor Recreation
- Regulatory
- Civil Works Projects: >\$125 M
- CAP





# OVERVIEW



- The Corps mission, to maintain safe and efficient navigation in the Bay, has been complicated over the past decade by rising costs and a flat Operations and Maintenance budget.
- Engineering Regulation 1105-2-100 requires a long-term plan for placing dredge material called a Dredge Material Management Plan (DMMP).
- DMMPs:
  1. Validate continued Federal investment.
  2. Evaluate future capacity of existing sites.
  3. Establish the ***Federal standard*** or base plan.





# WHY ARE WE DOING THIS?

- Dredge about 3M cubic yards/yr.
- Sediment deficit in the Bay
- Sea-level change
- Anticipated need for fill to address flood risks and ecosystem
- LTMS Management Plan (2001)





# OBJECTIVES

- Coordinate the efforts of responsible agencies
- Identify an array of acceptable sites
- Promote the reuse of dredged material
- Describe federal, state and local authorities





# HISTORY



## San Francisco District

1. worked on a DMMP between 2004-2010.
2. is restarting this effort.
3. recently completed preliminary assessments (PA) for the six deep-draft navigation projects.
4. has identified the inter-dependence of these projects, and recommends a single Regional Dredged Material Management Plan (RDMMP).
5. believes there are overall uncertainties in future placement site availability, environmental conditions, and beneficial use opportunities.





# REGIONAL DMMP

## 12 Federal Navigation Projects

### Deep Draft

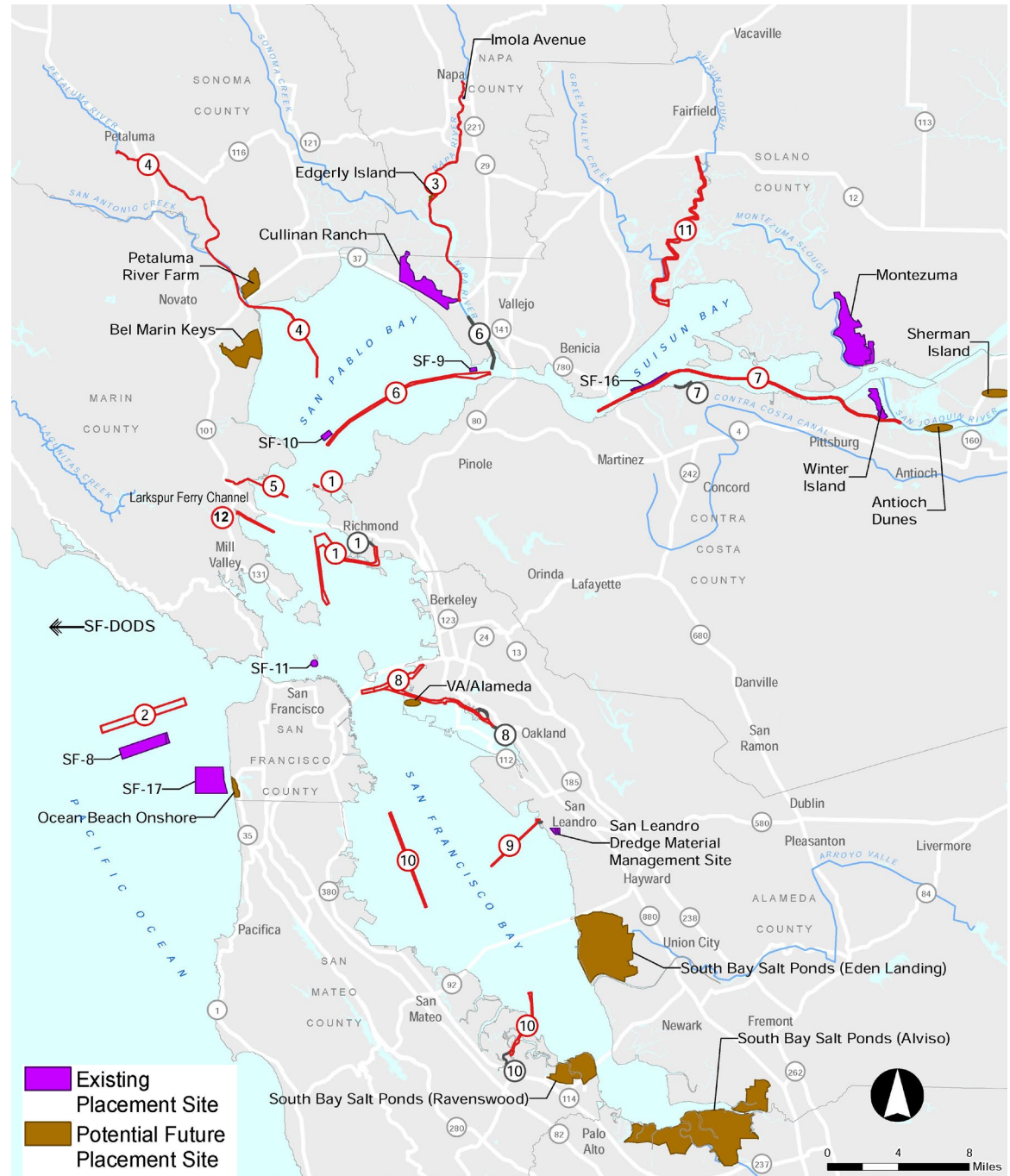
1. Richmond Harbor
2. SF Harbor
6. San Pablo Bay & Mare Island Strait
7. Suisun Bay Channel
8. Oakland Harbor
10. Redwood City Harbor

### Shallow Draft

3. Napa River
4. Petaluma River
5. San Rafael Creek
9. Jack Maltester Channel
11. Suisun Slough
12. Larkspur Ferry Channel

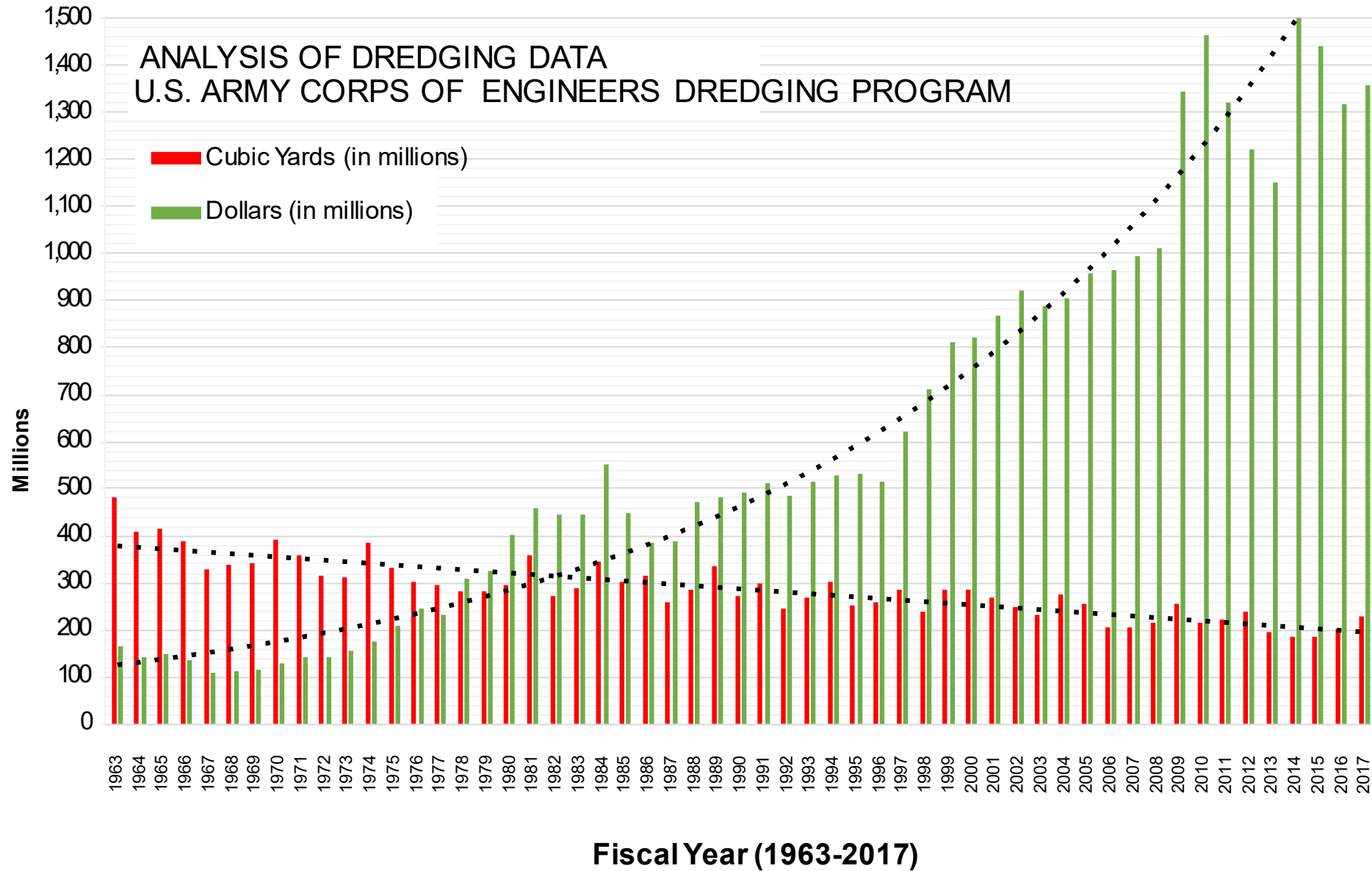
## 7 Placement Sites

- SF-8 San Francisco Bar
- SF-9 Carquinez Strait
- SF-10 San Pablo Bay
- SF-11 Alcatraz
- SF-16 Suisun Bay
- SF-17 Ocean Beach Nearshore Placement & Demonstration Site
- SF-DODS San Francisco Deep Ocean Disposal





# NATIONAL DREDGING DATA







# FEDERAL STANDARD OR BASE PLAN



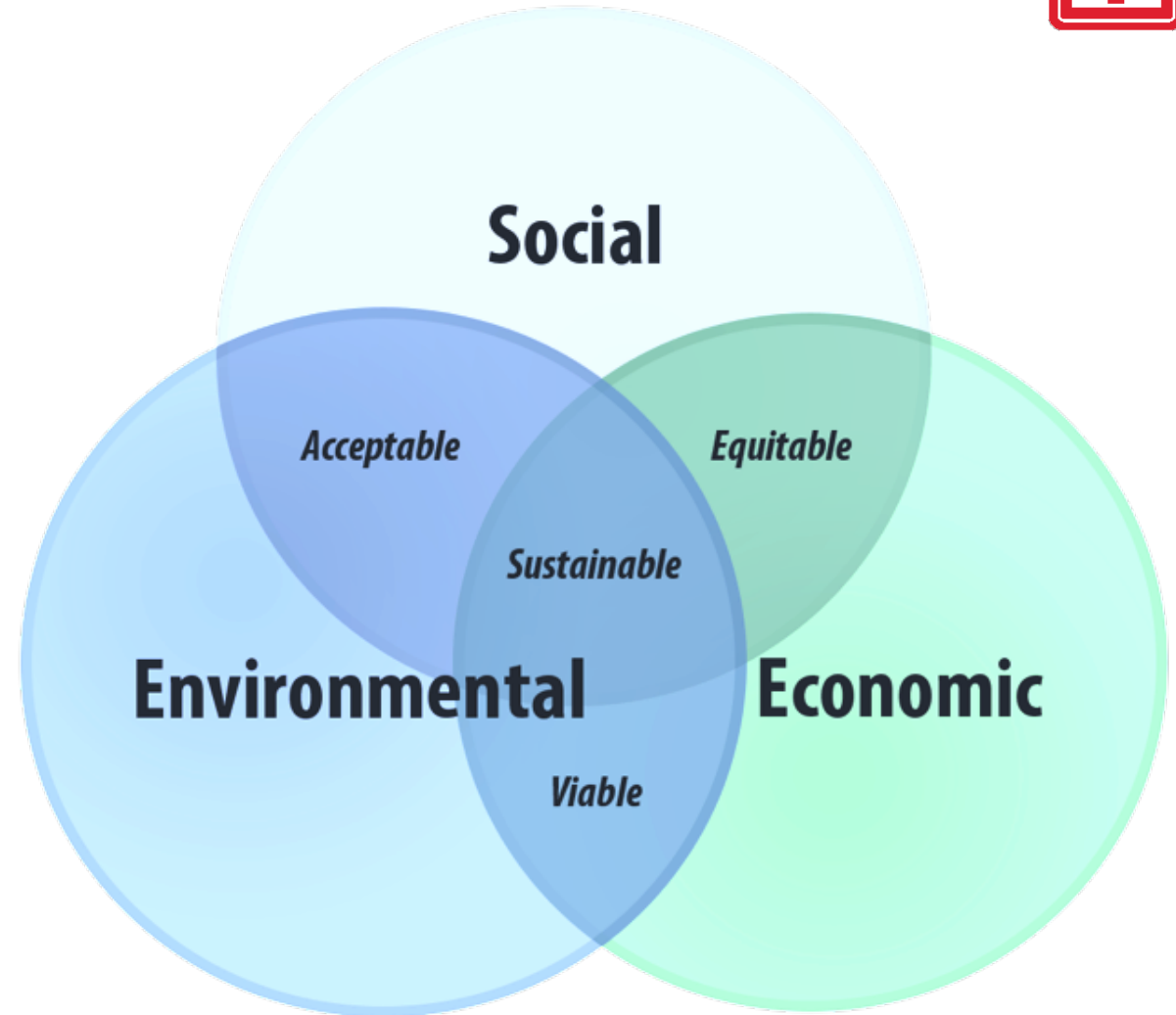
- Defined in 33 CFR, Part 335, Section 335.7, Definitions – “Federal standard means the dredged material disposal alternative or alternatives identified by the Corps which represent the **least costly** alternatives consistent with **sound engineering practices** and meeting the **environmental standards** established by the 404(b)(1) evaluation process or ocean dumping criteria.”





# CHALLENGES

- Funding—Investigations vs O&M appropriation
- Corps regulation—least costly placement plan that is consistent with sound engineering practice and meets all federal environmental standards.
- Corps regulation—incremental costs beyond the “base plan” must be borne by the nonfederal partner or sponsor.





# COMMUNICATION & COORDINATION



- Seek involvement from all non-Federal interests affected by Federal dredging in the Bay
- Identify and engage others that may have interest in using dredge material
- Improve existing science related to environmental concerns and sediment management





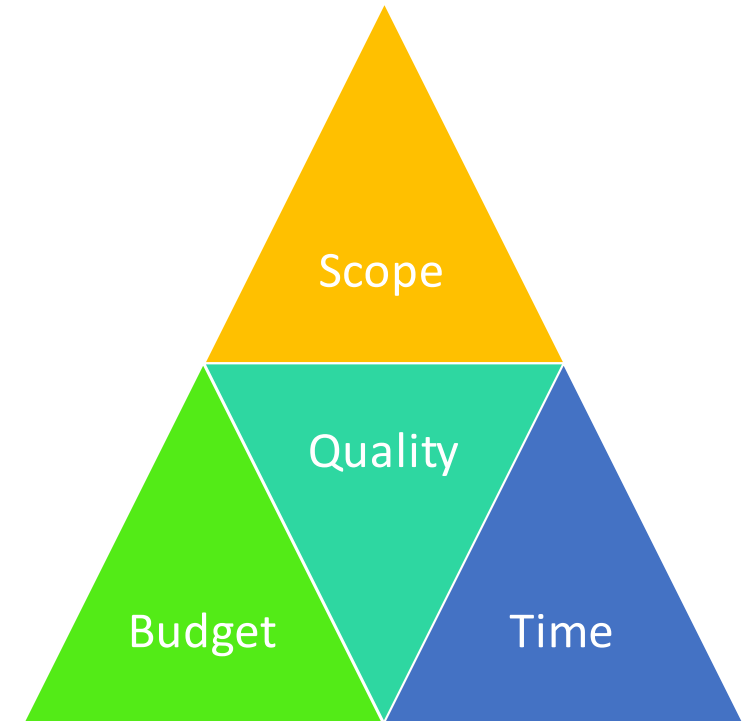
# PROJECT MANAGEMENT PLAN (ROAD MAP)



The PMP serves as a guide and reference on:

- overall scope, schedule, and budget
- quality of work products
- changes to the project
- risks to project execution
- internal and external communications

This PMP is not intended to anticipate or include all possible changes to the project during execution. It is a dynamic "living" document that requires periodic update.





# TIMELINE



# PMP TIMELINE





# WHAT DO WE WANT FROM YOU?



- Actively engage.
- Comment on the draft PMP.
- The draft PMP will be open for comment for 30 days (July 19-Aug 19) at:  
<https://www.spn.usace.army.mil/Missions/Projects-and-Programs/Regional-Dredge-Material-Management-Plan>
- Email your comments to: [CESPN-RDMMP@usace.army.mil](mailto:CESPN-RDMMP@usace.army.mil)





- What is your vision for the future of the SF Bay?
- What is working?....What is not working?
- How should we balance navigation safety with environmental benefits?
- Do we need a good sediment model?
- What other potential sites are available?
- Is there other needed science?