





**SANTA CRUZ HARBOR
NOW UNDER CONSTRUCTION
FOR SANTA CRUZ PORT DISTRICT**

IN COOPERATION WITH:
U.S. ARMY CORPS OF ENGINEERS
STATE DIVISION OF SMALL CRAFT HARBORS
STATE DEPARTMENT OF PARKS & RECREATION

CONTRACTOR
GRANITE CONSTRUCTION CO. ENGINEERS
EARL & WRIGHT INC.
SANTA CRUZ WATSONVILLE 49 FREMONT ST. SAN FRANCISCO







PRIVATE
PROPERTY
NO
TRESPASSING

ROAD
CLOSED













501177

BOCCIE BOY

25 2:23 PM



4 15:50





















1986 Cooperative Agreement between SCPD & USACE

COOPERATIVE AGREEMENT
BETWEEN
THE DEPARTMENT OF THE ARMY
AND
THE SANTA CRUZ PORT DISTRICT

Parties:

This Agreement is entered into this 24th day of APRIL 1986, by and between the Department of the Army, hereinafter called the Government, acting by and through the Assistant Secretary of the Army for Civil Works, and the Santa Cruz Port District, Santa Cruz, California.

Purpose:

The purpose of this Agreement is to complete the authorized construction at the federal project for Santa Cruz Harbor and to define the responsibilities of the parties for its future maintenance.







**Santa Cruz Harbor received 40,000 CY
of sediment from Arana Gulch during
Winter 2005-06.**

MAY 16 2006



- \$18.6 million in Tax-Exempt and Taxable Enterprise Revenue Bonds.
- Paid off DBAW and CMIA loans totaling approx. \$13.8 million.
- Net cash flow savings \$120,000/year first 11 years; \$67,250/year for next 17 yrs.
- Provided \$4 million low cost financing for new dredge while still achieving annual cost flow savings.
- Financing by Southwest Securities Inc / BBVA Compass Bank

2015 Cooperative Agreement between SCPD & USACE

AGREEMENT
BETWEEN
THE DEPARTMENT OF THE ARMY
AND
THE SANTA CRUZ PORT DISTRICT

This Agreement is entered into this 9TH day of November, 2015, by and between the Department of the Army (hereinafter the "Government"), represented by the U.S. Army Engineer, San Francisco District (hereinafter the "District Engineer") and the Santa Cruz Port District (hereinafter the "Port District"), represented by the Chairman of the Santa Cruz Port Commission.

WITNESSETH, THAT:

WHEREAS, the Santa Cruz Harbor Project (hereinafter the "Project") was authorized by Section 101 of the River and Harbor Act of 1958 (72 Stat. 300) in accordance with the plans and subject to the conditions recommended by the Chief of Engineers in House Document Numbered 357, 85th Congress, 2nd Session, and modified by Section 811 of the Water Resources Development Act of 1986 (100 Stat. 4168), Section 526 of the Water Resources Development Act of 1999 (113 Stat. 346), and Section 3035 of the Water Resources Development Act of 2007 (121 Stat. 1114);

WHEREAS, the Government and the Port District entered into a Cooperative Agreement (hereinafter the "CA") dated April 2, 1986, whereby the Port District agreed to acquire, operate, maintain, and rehabilitate or replace a dredge and appurtenant equipment and to assume responsibility for maintaining the dredged depth of the entrance channel, the harbor channel, and the turning basin, as authorized by Congress, and the Government agreed to continue to maintain the existing jetties at the Project;









October 17, 1989 Earthquake 5:04 PM









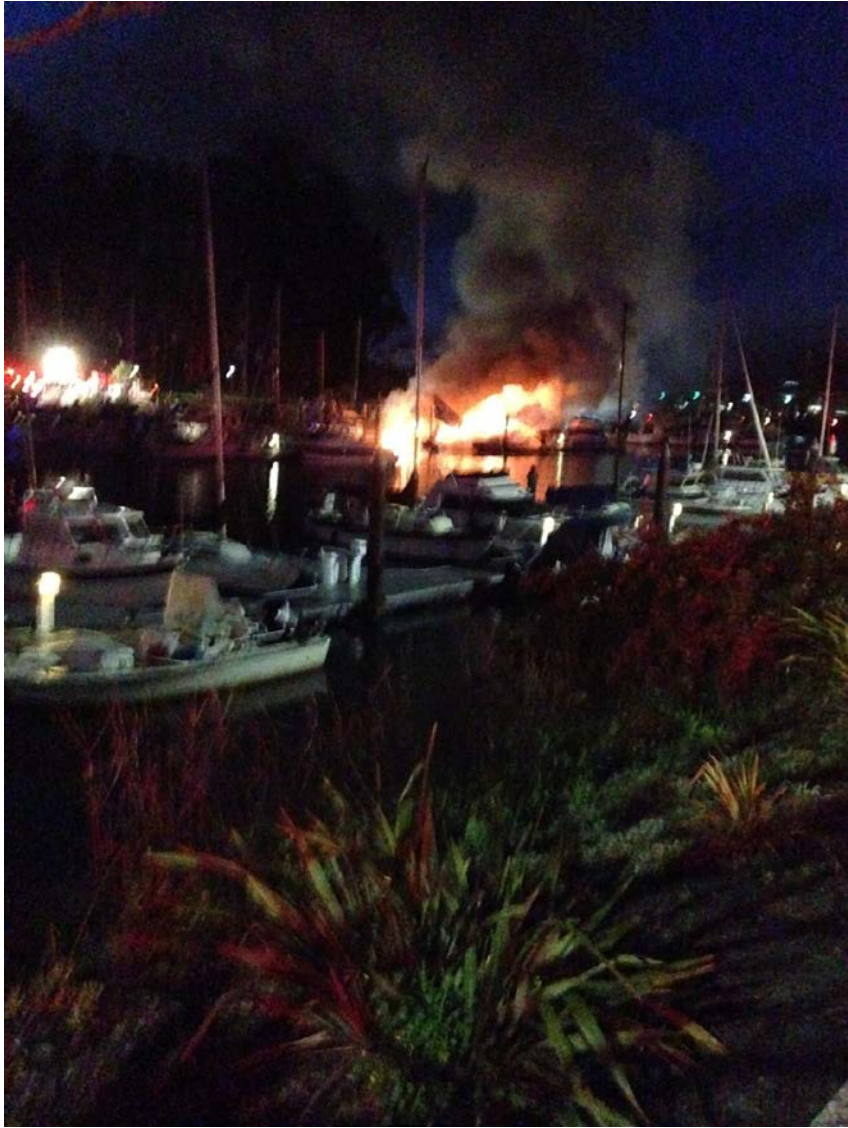
Docks remained in service for another 22 years,
until the March 11, 2011, tsunami



**\$19.5 million recovery cost.
41 projects.**









PUBLIC ACCESS AMENITIES AND SIGNS



LEGEND

- A-D Approximate location of Santa Cruz Tarplant subpopulation areas identified in 1989
- Seasonal Wetlands
- Meadow Overlook Area (20ft x 20ft)
- Entrance Signs
- Bench
- Bike Rack
- Trash and Recycling Receptacles

- 1 Interpretive Displays: History/Cultural Resources
- 2 Overview of Natural History
- 3 Tarplant and Coastal Prairie
- 4 Hagemann Gulch
- 5 Riparian and Wetlands
- 6 Arana Gulch Creek & Streamlife
- 7 Geology and Oaks

- Proposed Grazing Area
- Pedestrian/Bicycle Trail (wheelchair accessible)
- Pedestrian Trail (unpaved)
- Pedestrian Trail (unpaved/no dogs)
- Master Plan Boundary
- City Limit

Note: Trail width symbol not to scale

Twin Lakes Beachfront Improvement Project

Bird's Eye View Looking West Down East Cliff Dr.



20 Provides Coastal Access During Low Winter Sand Conditions



