

CMANC Winter Meeting

Projects Update

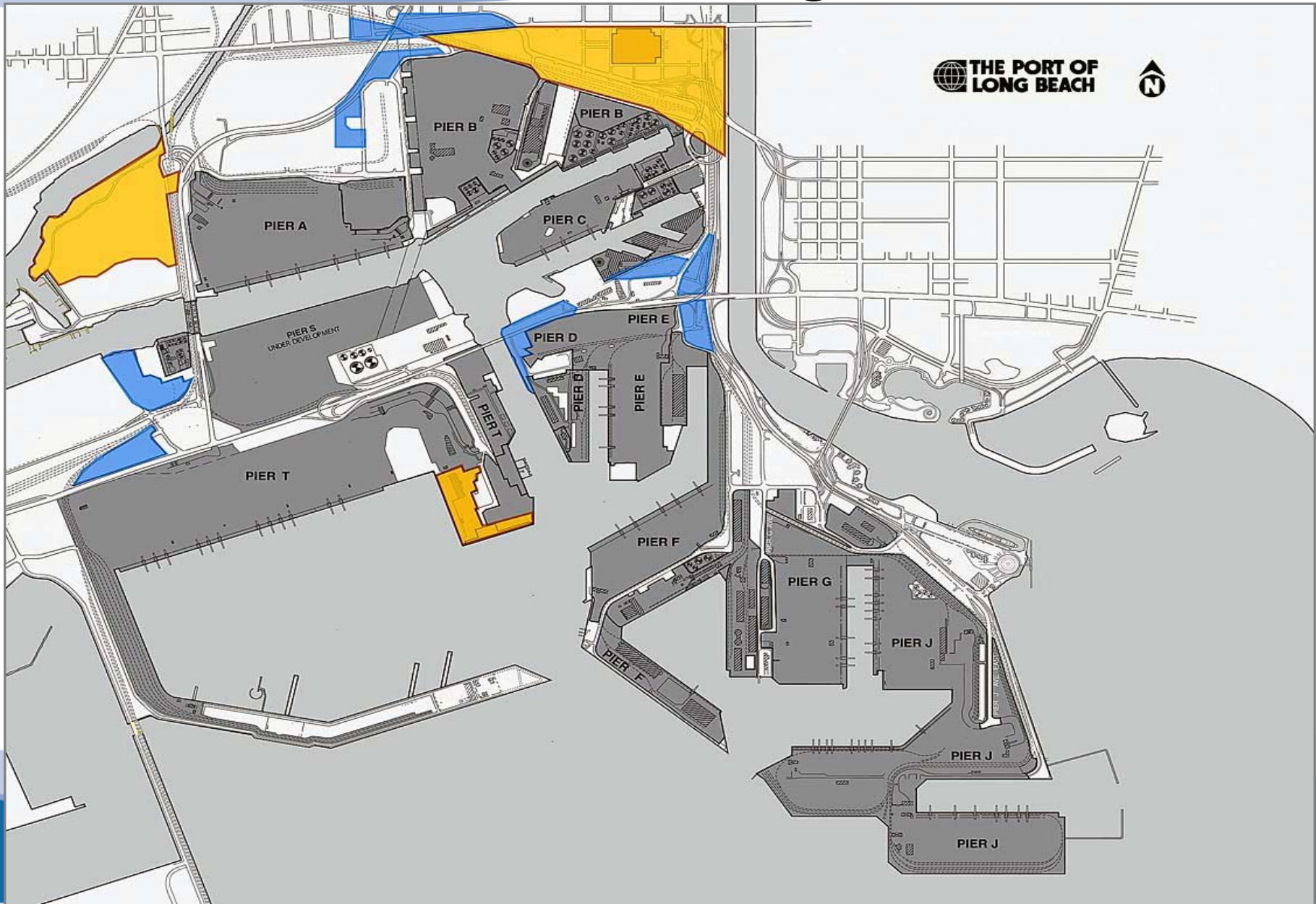
Doug Thiessen

Chief Harbor Engineer

The Port of Long Beach



The Port of Long Beach



The Port of Long Beach



The Changing Project Environment

- More emphasis on environmental review
- More outreach to community
- More deliberate (i.e., slower) approval processes

Current Major Projects Under Construction

- ◆ Ocean Boulevard TI Fwy Interchange
- ◆ Pier S Grading, Drainage & Utilities
- ◆ Pier T Phase III Site Dev (30 acres)
- ◆ BP Cold Ironing Onshore Electrical
- ◆ Pier G Wharf
- ◆ Pier E Redevelopment
- ◆ Security Command & Control Center
- ◆ Fire Station No. 24

Ocean Blvd-TI Fwy Interchange



**Eastbound
main traffic
lanes and
ramps to open
4th week of
January**

Ocean Blvd-TI Fwy Interchange



**Westbound
lanes to open
early Spring
with project
completion
June 2007**

Pier S Berths S102-S110 GDU

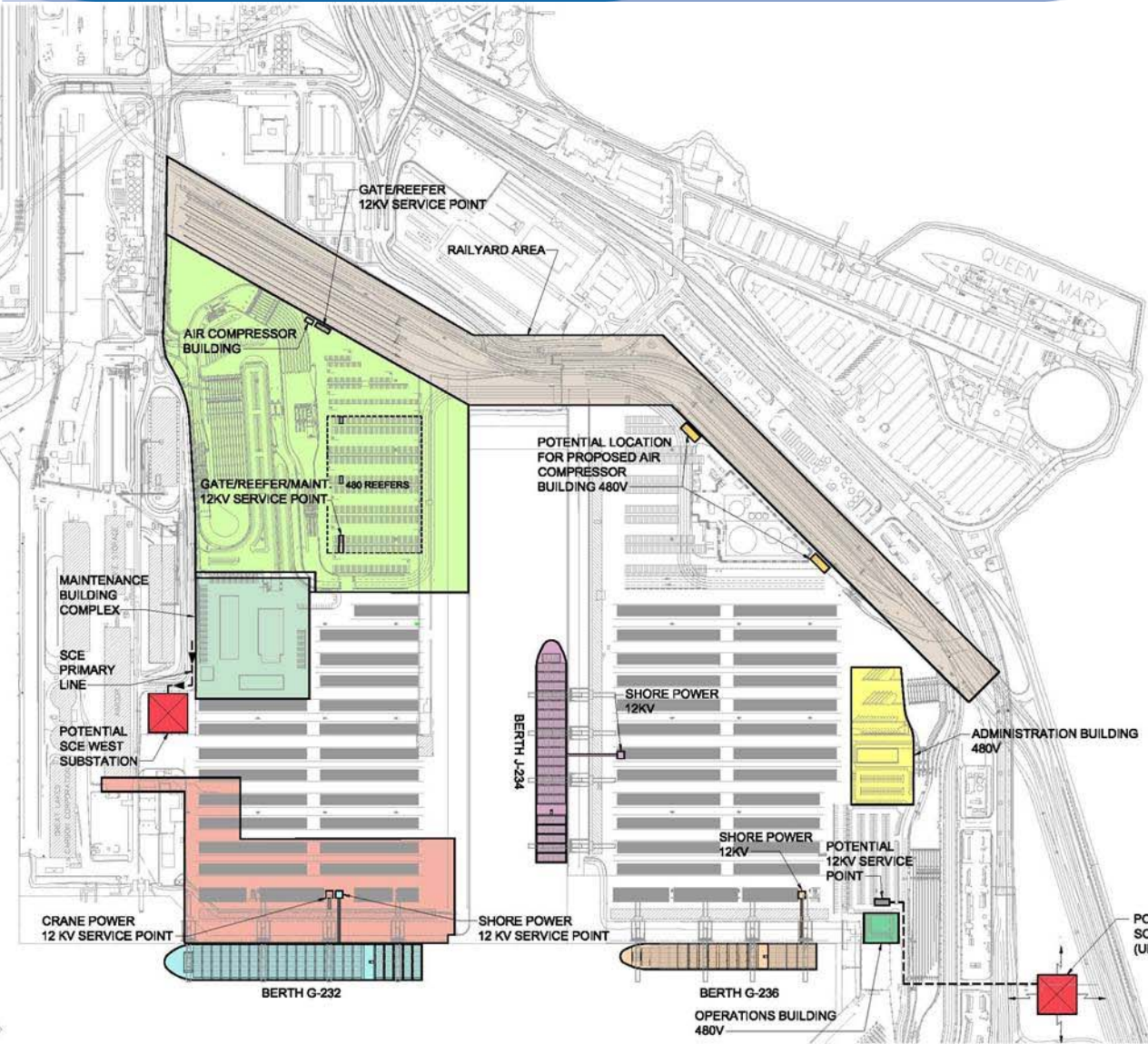
- Project consists of grading, drainage, and utilities on south half of pier
- Currently constructing two large storm water pump stations, a large MSE wall, a Pier S Lane & significant utility projects



Pier G Wharf & Backlands

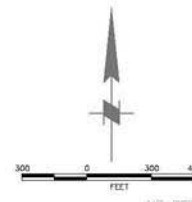
- *Notice to Proceed issued Nov 2006*
- *Work is proceeding on new wharf, rock dike, & grading*

Future Pier G Projects



LEGEND

- ADMINISTRATION BUILDING
- GATE/REEFER/MAINTENANCE COMPLEX
- MAINTENANCE BUILDING COMPLEX
- BERTH G-232 CRANE POWER (IN CONSTRUCTION) SEE DWG. 6546-2139. LETTER REQUESTING SERVICE FROM SCE WAS ISSUED ON 05/23/06.
- BERTH G-232 SHORE POWER (OUT TO BID)
- BERTH J-234 SHORE POWER
- BERTH G-236 SHORE POWER
- OPERATIONS BUILDING
- AIR COMPRESSOR BUILDINGS (TOTAL OF 2)
- RAILYARD AREA
- POTENTIAL SCE SUBSTATION



Pier T Phase III Site Dev

- 30 acre expansion of Pier T Container Yard by filling Dry-dock 1 and surrounding area
- Completion: July 2007

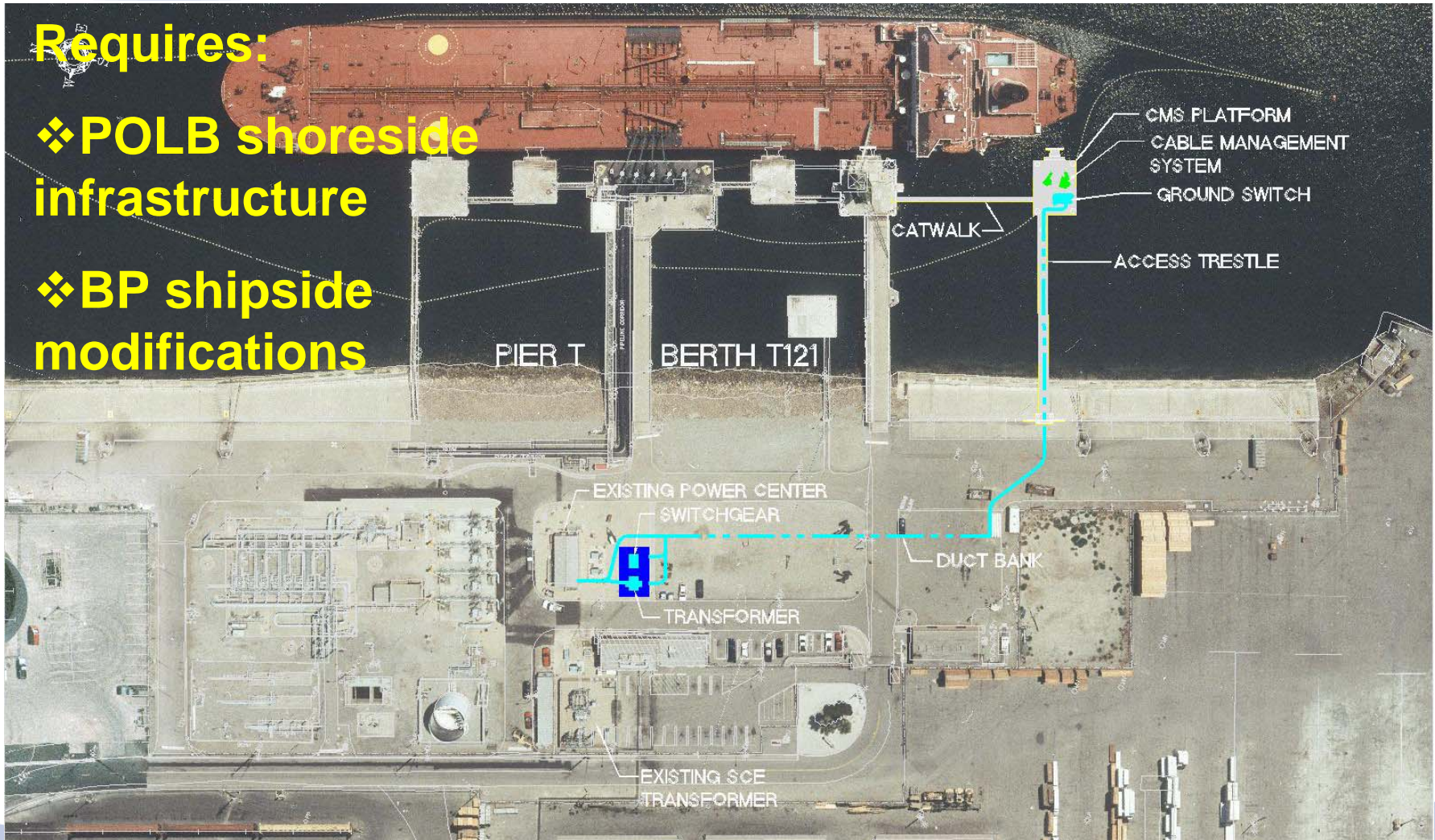


BP Cold Ironing

Requires:

❖ POLB shoreside infrastructure

❖ BP shipside modifications



Security Command & Control Center

- ❖ Notice to Proceed January 2007
- ❖ Occupancy 2009



Fire Station No. 24

Including living quarters, fire truck apparatus garage & utility infrastructure

Const Start:
Jan 2007

Occupancy:
Jan 2008



Future Projects

- Gerald Desmond Bridge
- Pier D/E Projects
- Pier S Projects
- Pier C Cold Ironing
- Rail Projects
- Pier G Projects

Gerald Desmond Bridge

- Issuance of EIR expected 4th Qtr 2007
- Preliminary Design is in progress



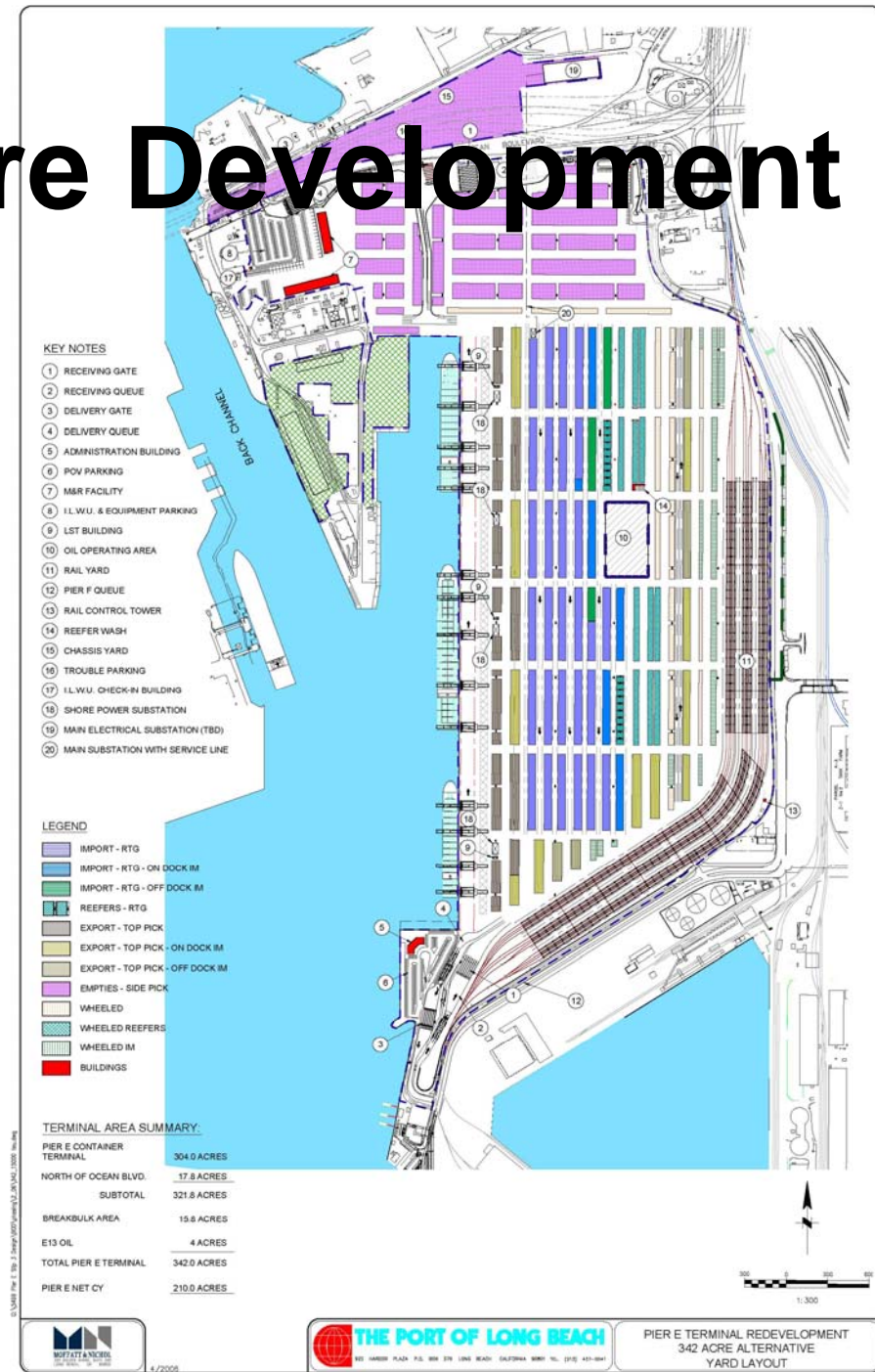
Gerald Desmond Bridge

- Construction start early 2009
- Construction completion in 2013



Piers D & E Future Development

- Release of EIR/Certification July 2007
- Wharf Reconstruction at Berths E24-E27
- Slip Improvements at Berths E24-E27
- Widening of Slip 3
- Replace Sheet Pile Wharf at D28-D29



Future Pier S Projects

- EIR Certification Fall 2007
- Pier S Dike Realignment
- Pier S Terminal Buildings
- Pier S Container Yard
- Pier S Wharf Construction
- Pier S Rail Project
- Cerritos Channel Widening

Pier S will require a significant amount of dredging to realign the dike





Pier C Cold Ironing

- Example of a “Green Lease”
- At Matson Terminal
- Currently in the planning stage

Proposed Rail Enhancements

In-Terminal Improvements

2000 - 2005	2005 - 2010	2010 - 2015
Pier T Pier G (ITS Storage Tracks)	Pier A (Phase 1) Pier S Pier G (Phase 2)	Pier A (Phase 2) Pier E Pier J Pier W
\$60 million	\$108 million	\$275 million
Total Cost: \$443M		

Capacity Improvements

2000 - 2005	2005 - 2010	2010 - 2020
\$27 million	\$35 million	\$400 million
Total Cost: \$462M		

Pier B Railyard Future Activities

Phases 2 & 3

- **Interim build-out**
 - 20 tracks @ 47,000' (152 Cars)
- **Full build-out**
 - Mini ICTF (4 wt / 3st / 46 ac.)
 - No at-grade crossing
 - Corridor mainlines
 - Two 8,000 arrival/departure tracks







Customer Orientation

Thank You!

**Doug Thiessen
Chief Harbor Engineer**